

APP CRS	Rwy Idg	N/A
328°	TDZE	N/A
	Apt Elev	1335

## RNAV (GPS)-D

ROGUE VALLEY INTL/MEDFORD (MFR)

RNP APCH.

TA

Circling NA for Cats C and D northeast of Rwy 14-32.

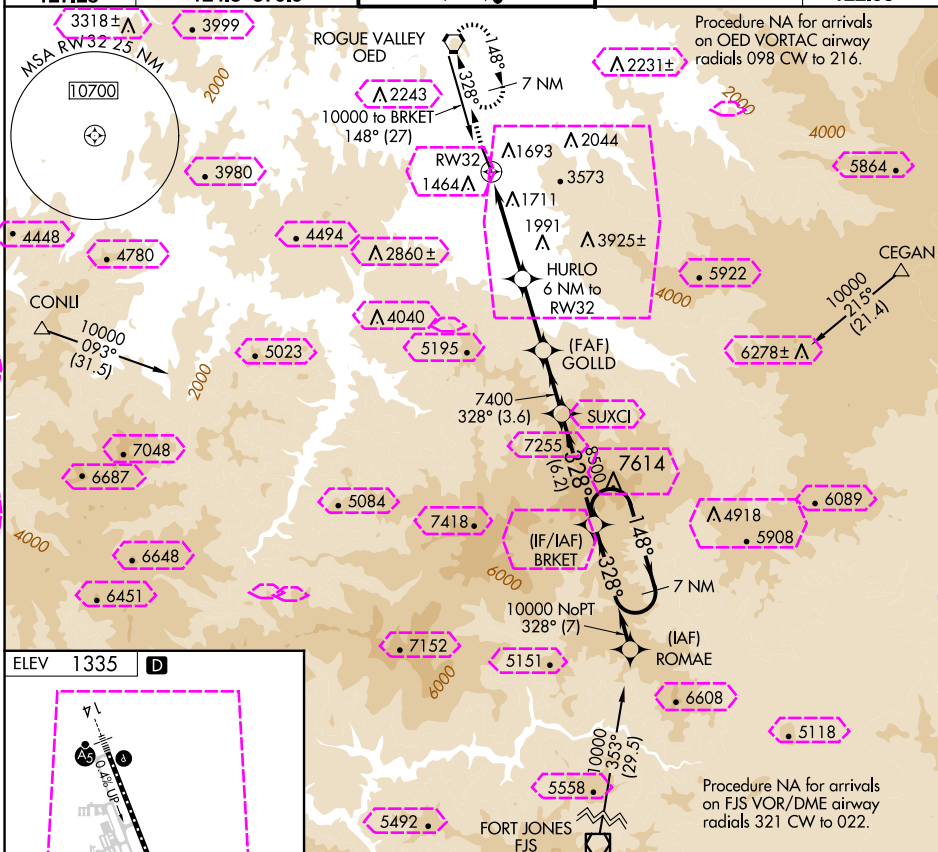
MISSED APPROACH: Climb to 7800 direct  
OED VORTAC and hold, continue climb-in-hold  
to 7800.

ATIS  
127.25

CASCADE APP CON ★  
124.3 379.9

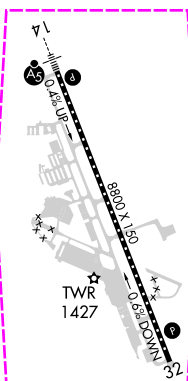
MEDFORD TOWER ★  
119.4 (CTAF) **L** 257.8

GND CON  
**121.8**

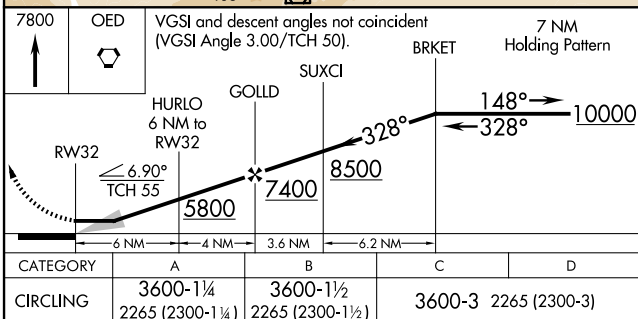
UNICOM  
122.95

ELEV	1335	D
------	------	---

**D**



CL Rwy 14-32 **L**  
TDZ/CL Rwy 14 **L**  
REIL Rwy 32 **L**  
HIRL Rwy 14-32 **L**



MEDFORD, OREGON  
Amdt 1B 07OCT21

ROGUE VALLEY INTL/MEDFORD (MFR)

RNAV (GPS)-D

42°22'N-122°52'W

NW-1, 10 JUL 2025 to 07 AUG 2025

MEDFORD, OREGON

AL-251 (FAA)

25219

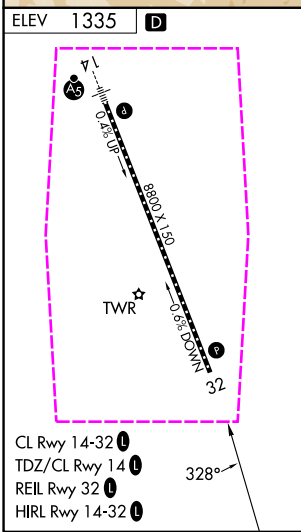
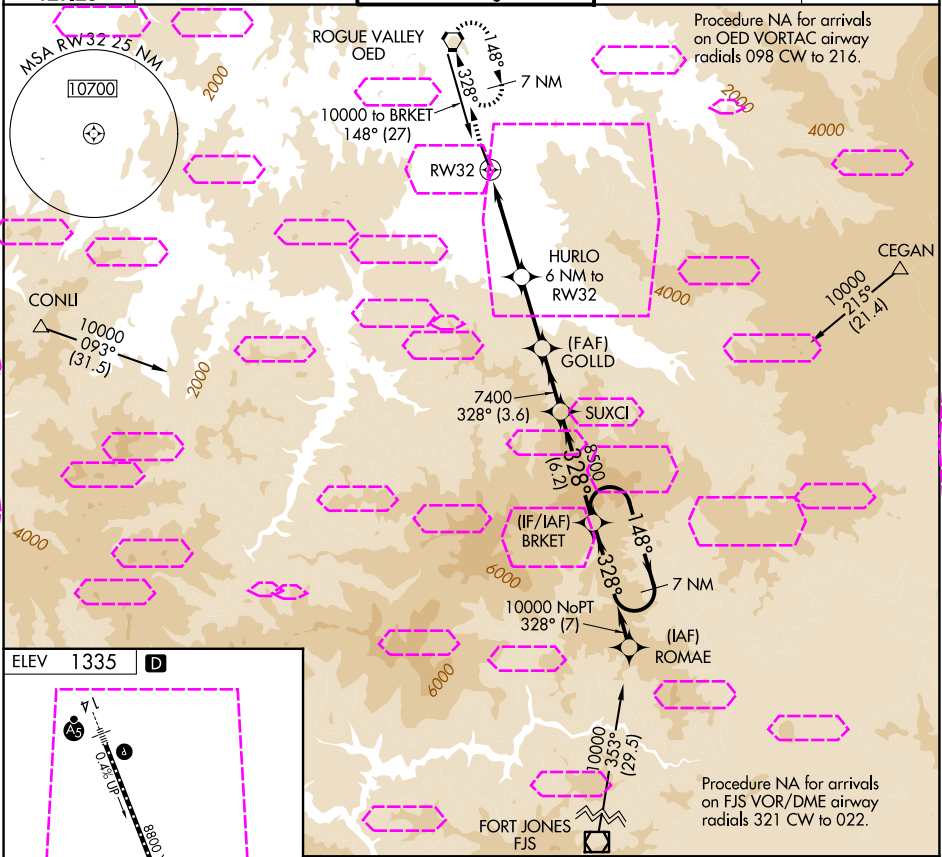
APP CRS	Rwy Ldg	N/A
328°	TDZE	N/A
	Apt Elev	1335

# RNAV (GPS)-D

ROGUE VALLEY INTL/MEDFORD (MFR)

RNP APCH.	MISSED APPROACH: Climb to 7800 direct OED VORTAC and hold, continue climb-in-hold to 7800.
Circling NA for Cats C and D northeast of Rwy 14-32.	

ATIS 127.25	CASCADE APP CON * 124.3 379.9	MEDFORD TOWER * 119.4 (CTAF) 257.8	GND CON 121.8	UNICOM 122.95
----------------	----------------------------------	---------------------------------------	------------------	------------------



7800	OED	VGSI and descent angles not coincident (VGSI Angle 3.00/TCH 50).		7 NM Holding Pattern	
CATEGORY		A	B	C	D
CIRCLING		3600-1¼ 2265 (2300-1¼)	3600-1½ 2265 (2300-1½)	3600-3	2265 (2300-3)

MEDFORD, OREGON  
Amdt 1B 07OCT21

42°22'N-122°52'W

ROGUE VALLEY INTL/MEDFORD (MFR)  
RNAV (GPS)-D

NW-1, 07 AUG 2025 to 04 SEP 2025

NW-1, 07 AUG 2025 to 04 SEP 2025