

25107

AIRPORT DIAGRAM

ROGUE VALLEY INTL/MEDFORD (MFR)

AL-251 (FAA)

MEDFORD, OREGON

ATIS
127.25
MEDFORD TOWER ★
119.4 257.8
GND CON
121.8

D

ELEV 1294
BLAST PAD
200 X 200

CAUTION: BE ALERT TO RUNWAY CROSSING CLEARANCES.
REARBACK OF ALL RUNWAY HOLDING
INSTRUCTIONS IS REQUIRED.

42°23'N

CIVIL AIR
PATROL
TRANSIENT
PARKING

U.S.
FOREST
SERVICE

NWS

GENERAL
AVIATION
PARKING

HELICOPTER
PARKING

TRANSIENT
PARKING

FBO

TWR 1427

TERMINAL

FIRE STATION

AIR CARGO

SOUTH CARGO
APRON

JANUARY 2025
ANNUAL RATE OF CHANGE
0.1° W

8800 X 150

EAST
APRON

42°22'N

RWY 14-32
PCR 1110 F/D/X/T
S-75, D-200, 2D-400

BLAST PAD
200 X 200

FIELD
ELEV
1335

122°53'W

122°52'W

AIRPORT DIAGRAM

MEDFORD, OREGON

ROGUE VALLEY INTL/MEDFORD (MFR)

25107

NW-1, 10 JUL 2025 to 07 AUG 2025

NW-1, 10 JUL 2025 to 07 AUG 2025

25219

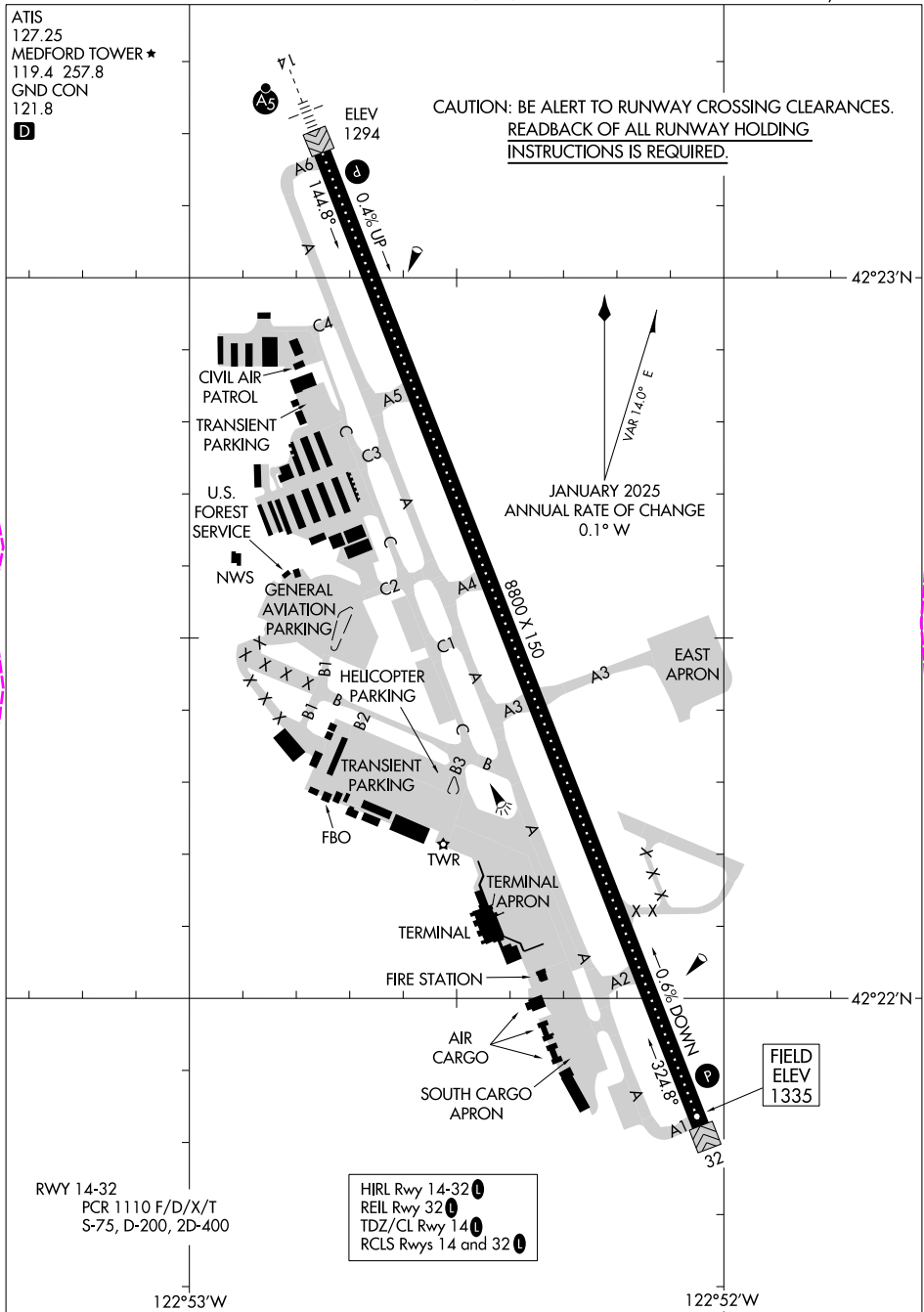
AIRPORT DIAGRAM

AL-251 (FAA)

ROGUE VALLEY INTL/MEDFORD (MFR)
MEDFORD, OREGON

ATIS
 127.25
 MEDFORD TOWER ★
 119.4 257.8
 GND CON
 121.8

CAUTION: BE ALERT TO RUNWAY CROSSING CLEARANCES.
READBACK OF ALL RUNWAY HOLDING
INSTRUCTIONS IS REQUIRED.



AIRPORT DIAGRAM

25219

MEDFORD, OREGON
ROGUE VALLEY INTL/MEDFORD (MFR)

NW-1, 07 AUG 2025 to 04 SEP 2025

NW-1, 07 AUG 2025 to 04 SEP 2025