

MARTINSBURG, WEST VIRGINIA

AL-249 (FAA)

24193

VORTAC MRB	APP CRS	Rwy Idg	N/A
112.1	290°	TDZE	N/A
Chan 58		Apt Elev	565

VOR-A

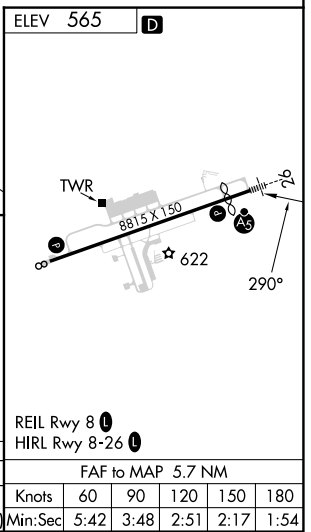
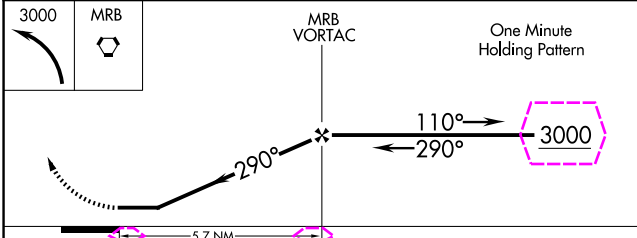
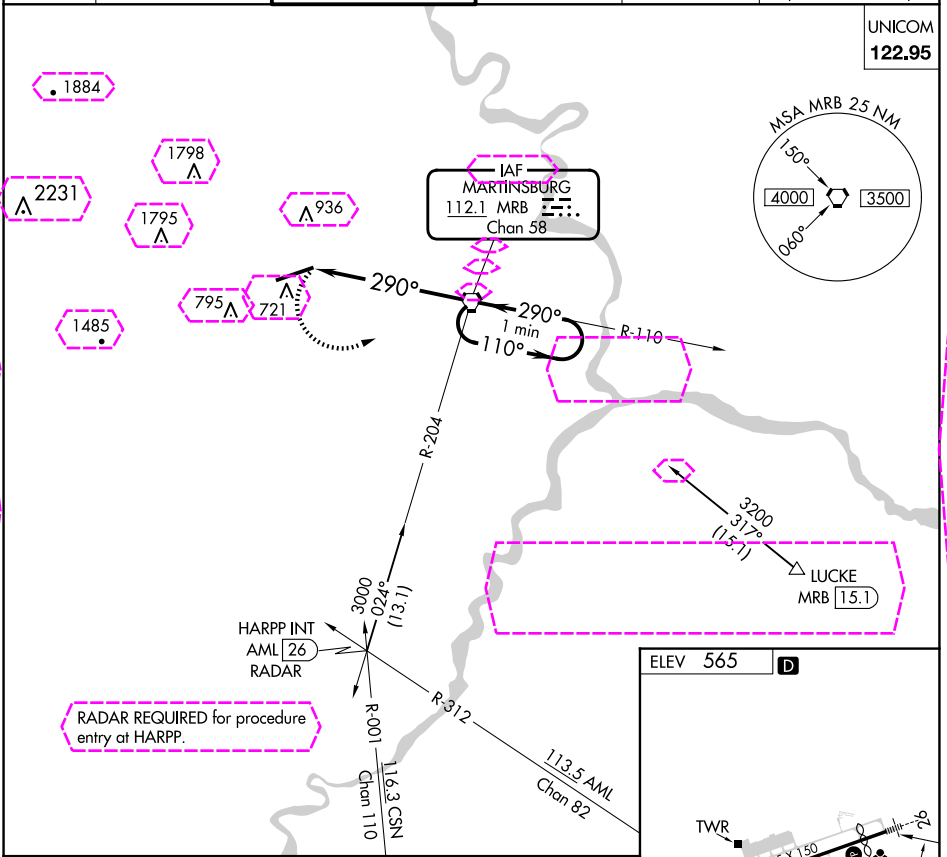
EASTERN WV RGNL/SHEPHERD FLD (MRB)

When local altimeter setting not received, use Hagerstown altimeter setting and increase all MDA 80 feet and Cat C/D visibility ¼ mile.

MISSED APPROACH: Climbing left turn to 3000 direct MRB VORTAC and hold, continue climb in hold to 3000.

ASOS	POTOMAC APP CON	MARTINSBURG TOWER ★	GND CON	CLNC DEL	CLNC DEL
119.925	126.825 239.025	124.3 (CTAF) 233.7	121.8 257.65	121.8 257.65	132.075 269.075 (When twr closed)

UNICOM
122.95



CATEGORY	A	B	C	D	E	FAF to MAP 5.7 NM
1120-1	1240-1	1240-2	1260-2¼	2140-3		
555 (600-1)	675 (700-1)	675 (700-2)	695 (700-2¼)	1575 (1600-3)		
Knots	60	90	120	150	180	
Min:Sec	5:42	3:48	2:51	2:17	1:54	

MARTINSBURG, WEST VIRGINIA

EASTERN WV RGNL/SHEPHERD FLD (MRB)

Amdt 10A 16JUL20

39°24'N-77°59'W

VOR-A

NE-4, 10 JUL 2025 to 07 AUG 2025

NE-4, 10 JUL 2025 to 07 AUG 2025

MARTINSBURG, WEST VIRGINIA

AL-249 (FAA)

25219

VORTAC MRB	APP CRS	Rwy Ldg TDZE	N/A
112.1	290°		N/A
Chan 58		Apt Elev	565

VOR-A

EASTERN WV RGNL/SHEPHERD FLD (MRB)

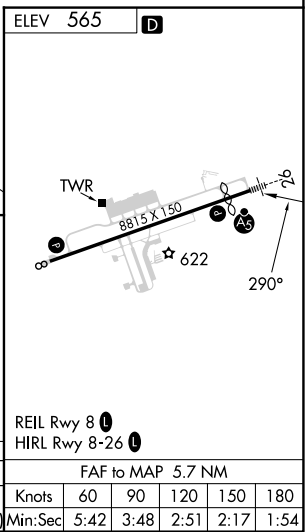
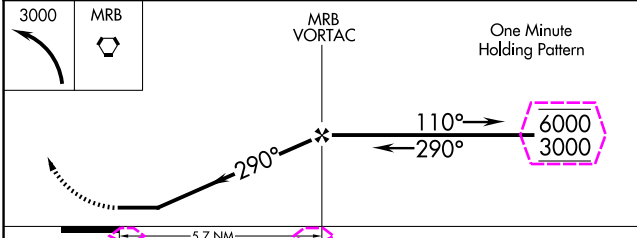
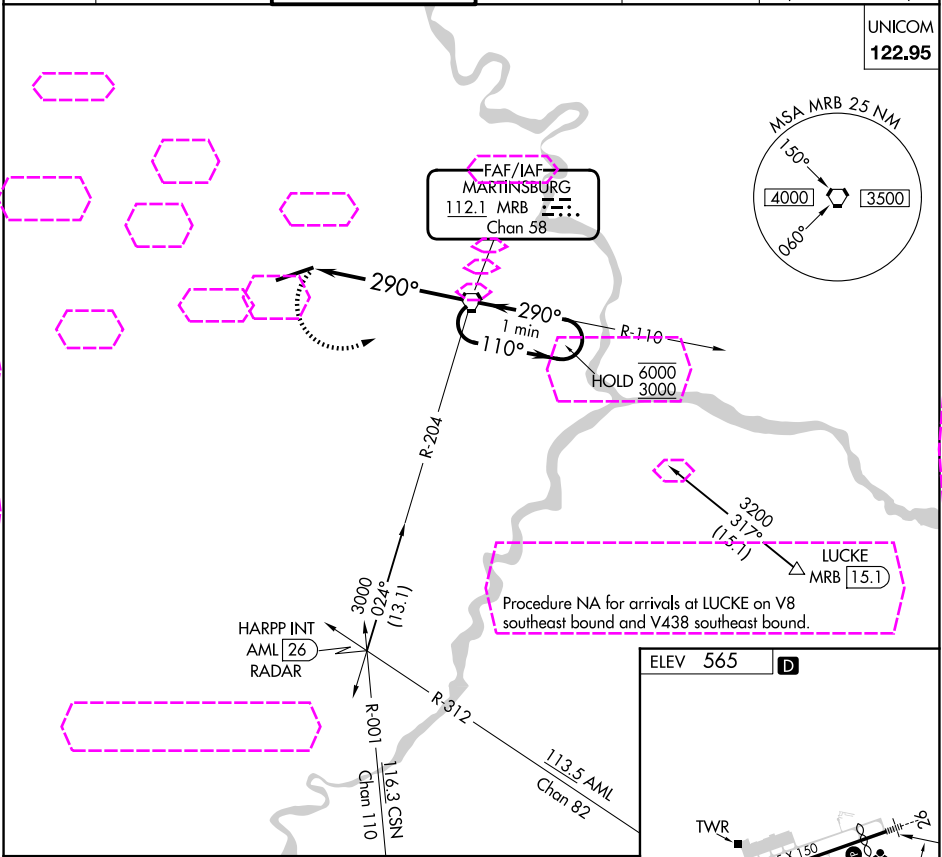
RADAR required for procedure entry at HARPP.

When local altimeter setting not received, use HGR altimeter setting: increase all MDAs 80 feet and Circling visibility Cts C/D ¼ SM.

MISSED APPROACH: Climbing left turn to 3000 direct MRB VORTAC and hold, continue climb in hold to 3000.

ASOS	POTOMAC APP CON	MARTINSBURG TOWER ★	GND CON	CLNC DEL	CLNC DEL
119.925	126.825 239.025	124.3 (CTAF) 233.7	121.8 257.65	121.8 257.65	132.075 269.075 (When twr closed)

UNICOM
122.95



CATEGORY	A	B	C	D	E	FAF to MAP 5.7 NM					
CIRCLING	1120-1 555 (600-1)	1240-1 675 (700-1)	1240-2 675 (700-2)	1320-2½ 755 (800-2½)	2180-3 1615 (1700-3)	Knots	60	90	120	150	180
						Min:Sec	5:42	3:48	2:51	2:17	1:54

MARTINSBURG, WEST VIRGINIA

EASTERN WV RGNL/SHEPHERD FLD (MRB)

Amdt 10B 07AUG25

39°24'N-77°59'W

VOR-A

NE-4, 07 AUG 2025 to 04 SEP 2025

NE-4, 07 AUG 2025 to 04 SEP 2025