

RNAV (GPS) RWY 8

MARTINSBURG, WEST VIRGINIA

AL-249 (FAA)

25219

WAAS CH 99633 W08A	APP CRS 079°	Rwy Ldg TDZE 565 Apt Elev 565	8215
--	------------------------	---	-------------

RNAV (GPS) RWY 8

EASTERN WV RGNL/SHEPHERD FLD (MRB)

RNP APCH - GPS.

▼

▲

For uncompensated Baro-VNAV systems, LNAV/VNAV NA below -14°C or above 54°C.

MISSED APPROACH: Climb to 3400 direct BURGY and hold.

ASOS 119.925	POTOMAC APP CON 126.825 239.025	MARTINSBURG TOWER ★ 124.3 (CTAF) 233.7	GND CON 121.8 257.65	CLNC DEL 121.8 257.65	CLNC DEL 132.075 269.075 (When twr closed)
------------------------	---	---	--------------------------------	---------------------------------	---

MISSED APCH FIX

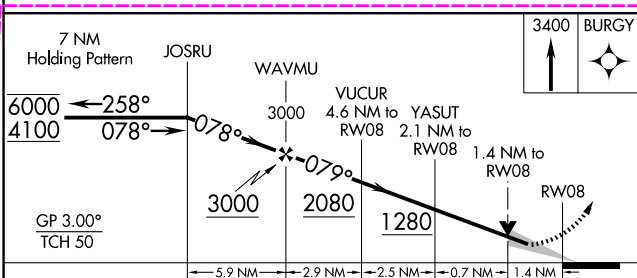
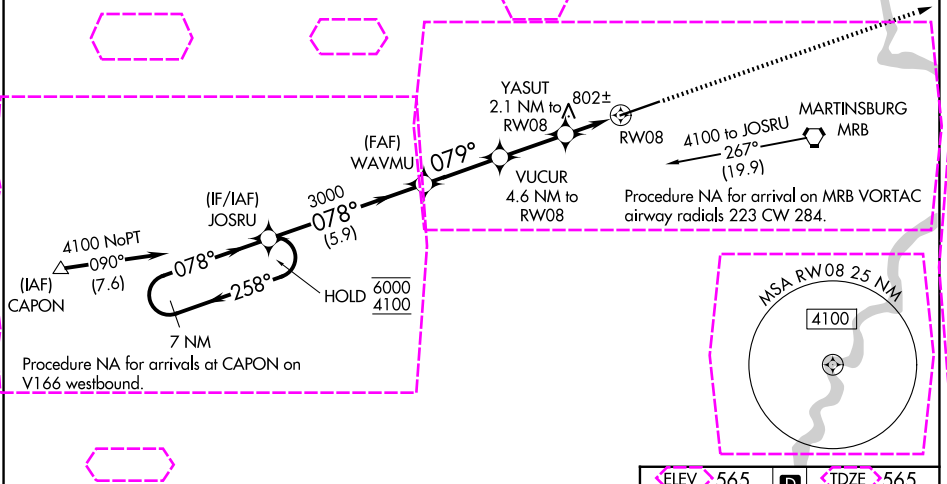
BURGY

259°

079°

7 NM

UNICOM
122.95



CATEGORY	A	B	C	D	E
LPV DA	815-3/4		250 (300-3/4)		
LNAV/VNAV DA	1059-1 3/8		494 (500-1 1/8)		
LNAV MDA	1060-1	495 (500-1)	1060-1 3/8	495 (500-1 1/8)	
CIRCLING	1100-1 535 (600-1)	1240-1 675 (700-1)	1240-2 675 (700-2)	1320-2 1/2 755 (800-2 1/2)	2180-3 615 (1700-3)

ELEV 565 D TDZE 565

TWR

815 X 150

622

079°

REIL Rwy 8

HIRL Rwy 8-26

MARTINSBURG, WEST VIRGINIA

Amdt 1E 07AUG25

39°24'N-77°59'W

EASTERN WV RGNL/SHEPHERD FLD (MRB)

RNAV (GPS) RWY 8