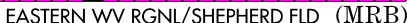
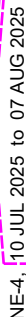


EASTERN WV RGNL/SHEPHERD FLD (MRB)

MISSED APPROACH: Climb to 1100 then climbing left turn to 3300 direct MRB VORTAC and hold, continue climb-in-hold to 3300.

122.95



ILS or LOC RWY 26

MARTINSBURG, WEST VIRGINIA

AL-249 (FAA)

25219

LOC I-EXW	APP CRS	Rwy Ldg	7815
108.3	259°	TDZE	548
		Apt Elev	565

ILS or LOC RWY 26

EASTERN WV RGNL/SHEPHERD FLD (MRB)

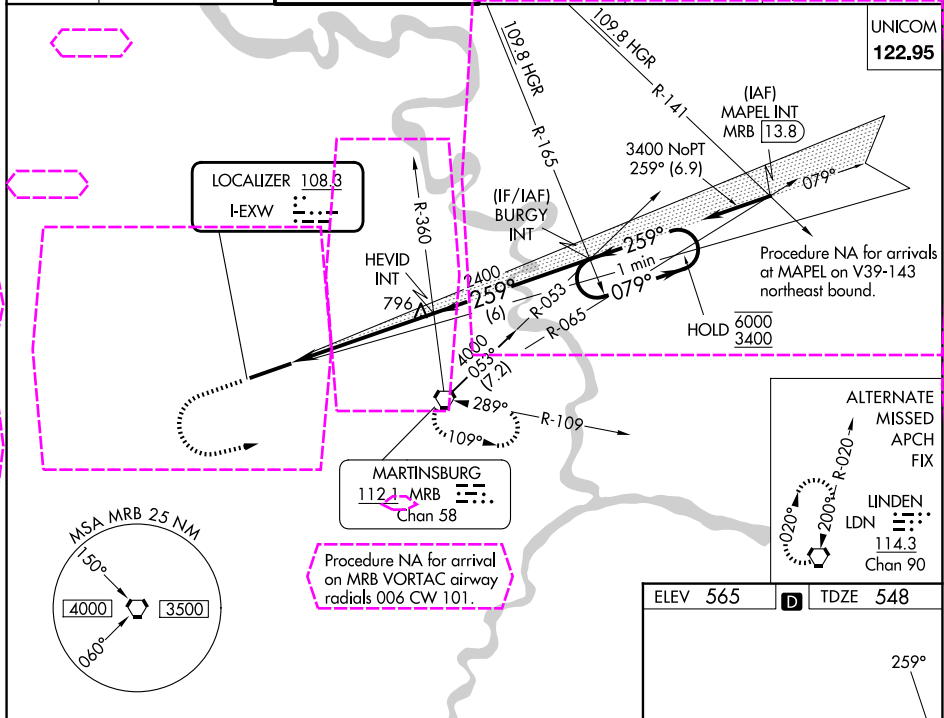


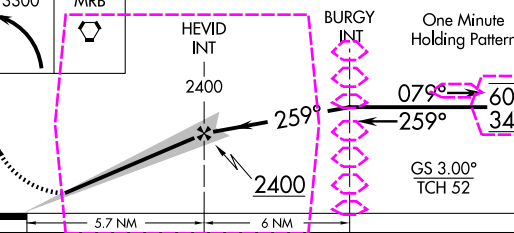
For inop ALS, increase S-ILS 26 Cat E visibility to ¾ SM and S-LOC 26 Cat E visibility to 1 ¼ SM.



MISSED APPROACH: Climb to 1100 then climbing left turn to 3300 direct MRB VORTAC and hold, continue climb-in-hold to 3300.

ASOS	POTOMAC APP CON	MARTINSBURG TOWER ★	GND CON	CLNC DEL	CLNC DEL
119.925	126.825 239.025	124.3 (CTAF) 233.7	121.8 257.65	121.8 257.65	132.075 269.075 (When twr closed)



1100	3300	MRB								
↑	↷	⬡								
			HEVID INT 2400			BURGY INT		One Minute Holding Pattern		
			2400			079°		6000		
			259°			259°		3400		
			5.7 NM			6 NM		GS 3.00° TCH 52		
CATEGORY	A		B		C		D		E	
S-ILS 26			748-½		200 (200-½)					
S-LOC 26	980-½		432 (500-½)		980-¾		432 (500-¾)			
CIRCLING	1100-1 535 (600-1)		1240-1 675 (700-1)		1240-2 675 (700-2)		1320-2 ½ 755 (800-2 ½)		2180-3 1615 (1700-3)	

ELEV 565	TDZE 548
REIL Rwy 8	HIRL Rwy 8-26
FAF to MAP 5.7 NM	
Knots	60 90 120 150 180
Min:Sec	5:42 3:48 2:51 2:17 1:54

MARTINSBURG, WEST VIRGINIA

EASTERN WV RGNL/SHEPHERD FLD (MRB)

Ampl 9 07AUG25

39°24'N-77°59'W

ILS or LOC RWY 26

NE-4, 07 AUG 2025 to 04 SEP 2025