

VORTAC SI 115.7 Chan 104	APP CRS 275°	Rwy Idg 7414 TDZE 38 Apt Elev 60
--	------------------------	---

VOR or TACAN RWY 30
LONG BEACH (DAUGHERTY FLD) (LGB)

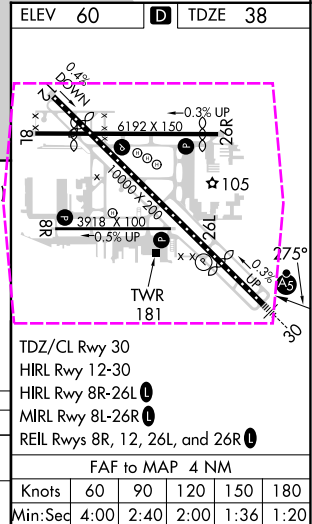
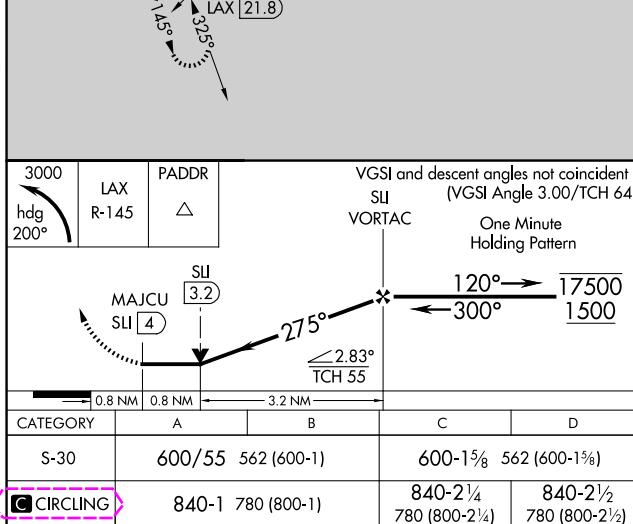
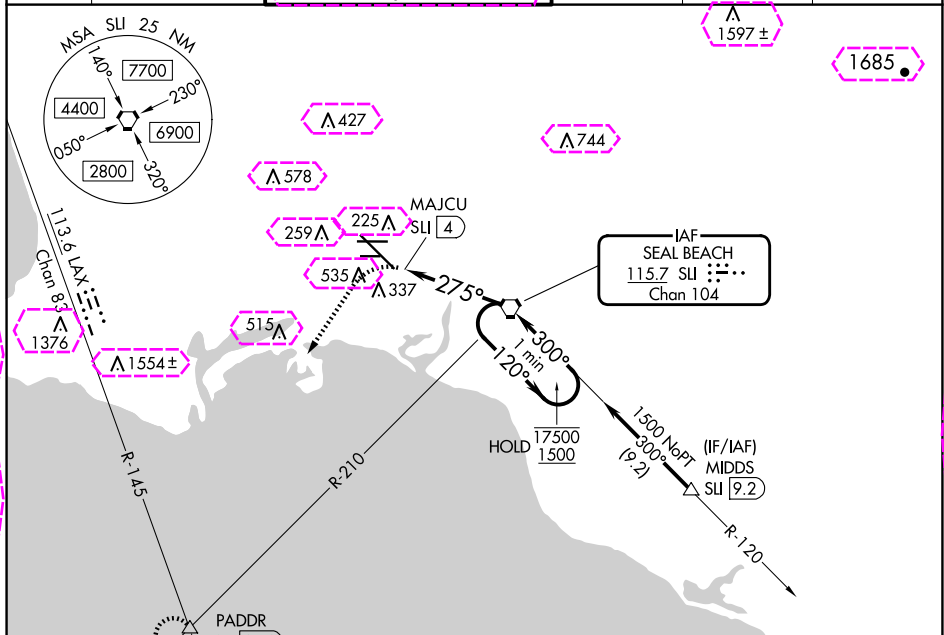
LONG BEACH (DAUGHERTY FLD) (LGB)

T Rwy 30 helicopter visibility reduction below RVR 4000 NA.
A Inop table does not apply.



MISSED APPROACH: Climbing left turn to 3000 on heading 200° and LAX VORTAC R-145 to PADDR INT/LAX 21.8 DME and hold.

ATIS 127.75	SOCAL APP CON 125.35 316.125	LONG BEACH TOWER* 120.5 257.6 (Rwy 12) 119.4 (CTAF) 0 257.6 (Rwy 30)	GND CON 133.0 257.6	CLNC DEL 118.15	UNICOM 122.95
----------------	---------------------------------	--	------------------------	--------------------	------------------



LONG BEACH, CALIFORNIA

AL-236 (FAA)

25219

VORTAC SU	APP CRS	Rwy Ldg	7414
115.7	275°	TDZE	38
Chan 104		Apt Elev	60

VOR or TACAN RWY 30

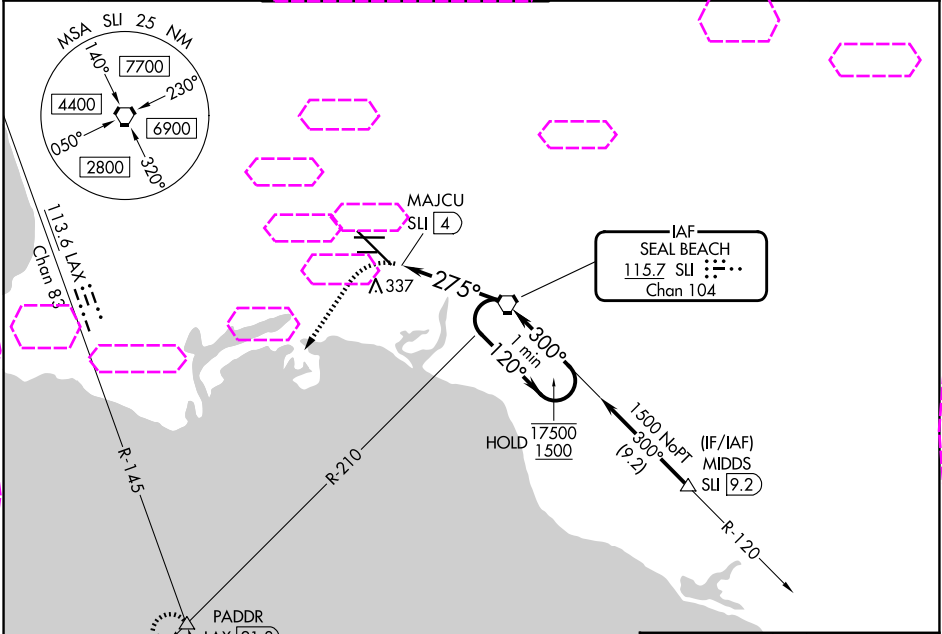
LONG BEACH (DAUGHERTY FLD) (LGB)

⚠ Rwy 30 helicopter visibility reduction below RVR 4000 NA.
⚠ Inop table does not apply.



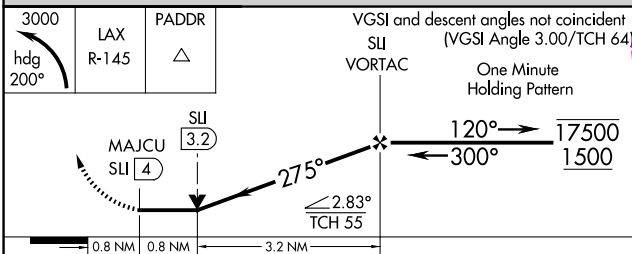
MISSED APPROACH: Climbing left turn to 3000 on heading 200° and LAX VORTAC R-145 to PADDD INT/LAX 21.8 DME and hold.

ATIS	SOCAL APP CON	LONG BEACH TOWER*	GND CON	CLNC DEL	UNICOM
127.75	125.35 316.125	120.5 257.6 (12) 119.4 (CTAF) 0 257.6 (30)	133.0 257.6	118.15	122.95



SW-3, 07 AUG 2025 to 04 SEP 2025

SW-3, 07 AUG 2025 to 04 SEP 2025



ELEV 60	TDZE 38
---------	---------

TDZ/CL Rwy 30
HIRL Rwy 12-30
HIRL Rwy 8R-26L
MIRL Rwy 8L-26R
REIL Rws 8R, 12, 26L, and 26R
FAF to MAP 4 NM

Knots	60	90	120	150	180
Min:Seq	4:00	2:40	2:00	1:36	1:20

LONG BEACH, CALIFORNIA
Amdt 9A 14JUL22

33°49'N-118°09'W

LONG BEACH (DAUGHERTY FLD) (LGB)

VOR or TACAN RWY 30