

RNAV (GPS) Z RWY 30
LONG BEACH (DAUGHERTY FLD) (LGB)

MISSED APPROACH: Climb to 800 then climbing left turn to 3000 direct PADDR and hold

Diagram illustrating the 301° intersection layout, showing the TDZ (Taxiway Development Zone), CL (Center Line), and RWY (Runway) boundaries. Key dimensions and labels include:

- TDZ/CL Rwy 30**
- HIRL Rwy 12-30**
- HIRL Rwy 8R-26L**
- MIRL Rwy 8L-26R**
- REIL Rws 8R, 12, 26L, and 26R**
- TDZ 38**
- ELEV 60**
- 0.4% DOWN**
- 0.3% UP**
- 0.5% UP**
- 0.3% UP**
- 6192 x 150**
- 10000 x 200**
- 3918 x 100**
- 105**
- 8R**
- 26L**
- 26R**
- 181**
- 301°**

LONG BEACH (DAUGHERTY FLD) (LGB)
RNAV (GPS) Z RWY 30

LONG BEACH, CALIFORNIA

AL-236 (FAA)

25219

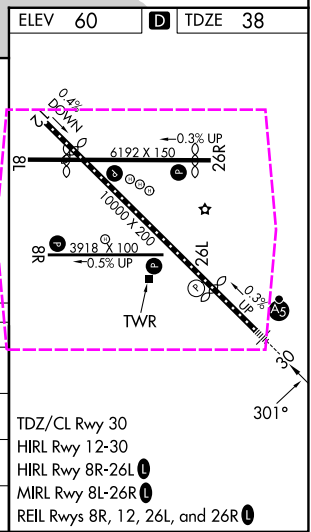
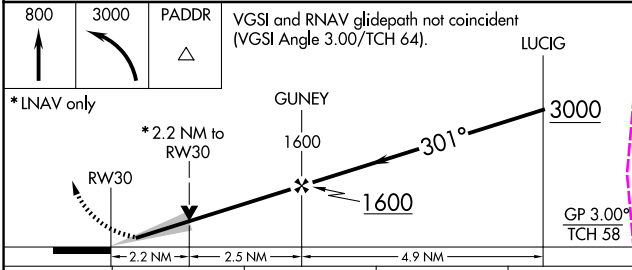
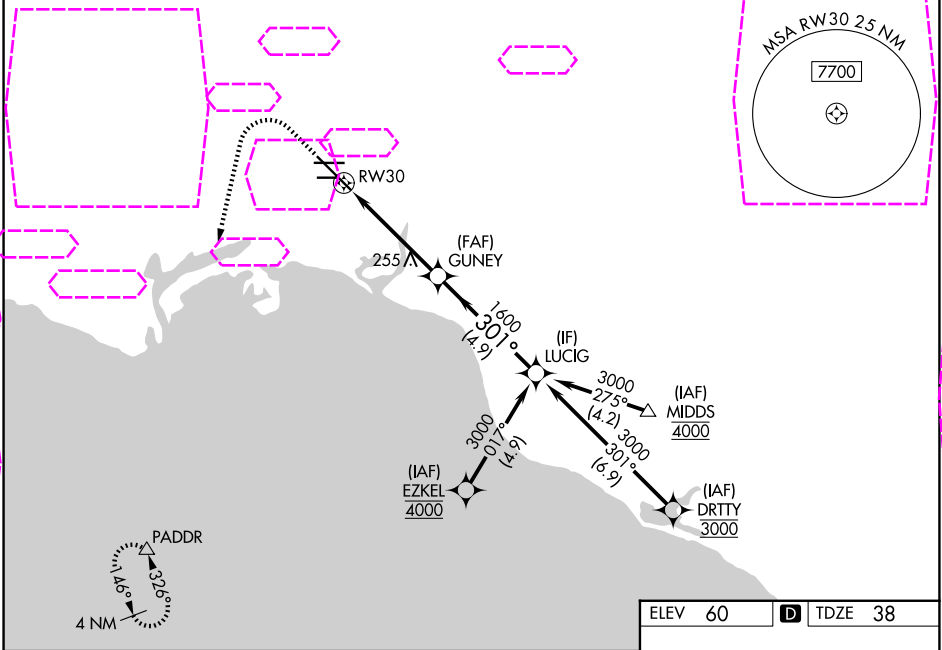
WAAS CH 99521 W30A	APP CRS 301°	Rwy Ldg TDZE 38 Apt Elev 60
----------------------------------------	------------------------	-------------------------------------------------

RNAV (GPS) Z RWY 30

LONG BEACH (DAUGHERTY FLD) (LGB)

RNP APCH. ▼ For uncompensated Baro-VNAV systems, LNAV/VNAV NA below 4°C or above 54°C. For inop ALS, increase LNAV Cat C and D visibility to 1½ SM.	MALSR AS	MISSED APPROACH: Climb to 800 then climbing left turn to 3000 direct PADDR and hold
--------------------------------------------------------------------------------------------------------------------------------------------------------	-------------	-------------------------------------------------------------------------------------

ATIS 127.75	SOCAL APP CON 125.35 316.125	LONG BEACH TOWER* 120.5 257.6 (12) 119.4 (CTAF) 0 257.6 (30)	GND CON 133.0 257.6	CLNC DEL 118.15	UNICOM 122.95
-----------------------	----------------------------------------	----------------------------------------------------------------------------------	-------------------------------	---------------------------	-------------------------



CATEGORY	A	B	C	D
LPV DA	261/18 223 (300-½)			
LNAV/VNAV DA	568/55 530 (600-1)			
LNAV MDA	520/24 482 (500-½)	520/50 482 (500-1)		
CIRCLING	840-1 780 (800-1)	840-1½ 780 (800-1½)		

LONG BEACH, CALIFORNIA
Amdt 4 28FEB19

33°49'N-118°09'W

LONG BEACH (DAUGHERTY FLD) (LGB)
RNAV (GPS) Z RWY 30

SW-3, 07 AUG 2025 to 04 SEP 2025

SW-3, 07 AUG 2025 to 04 SEP 2025