

LONG BEACH, CALIFORNIA

AL-236 (FAA)

23222

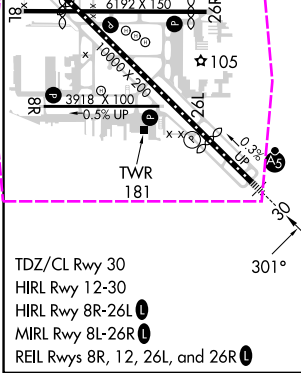
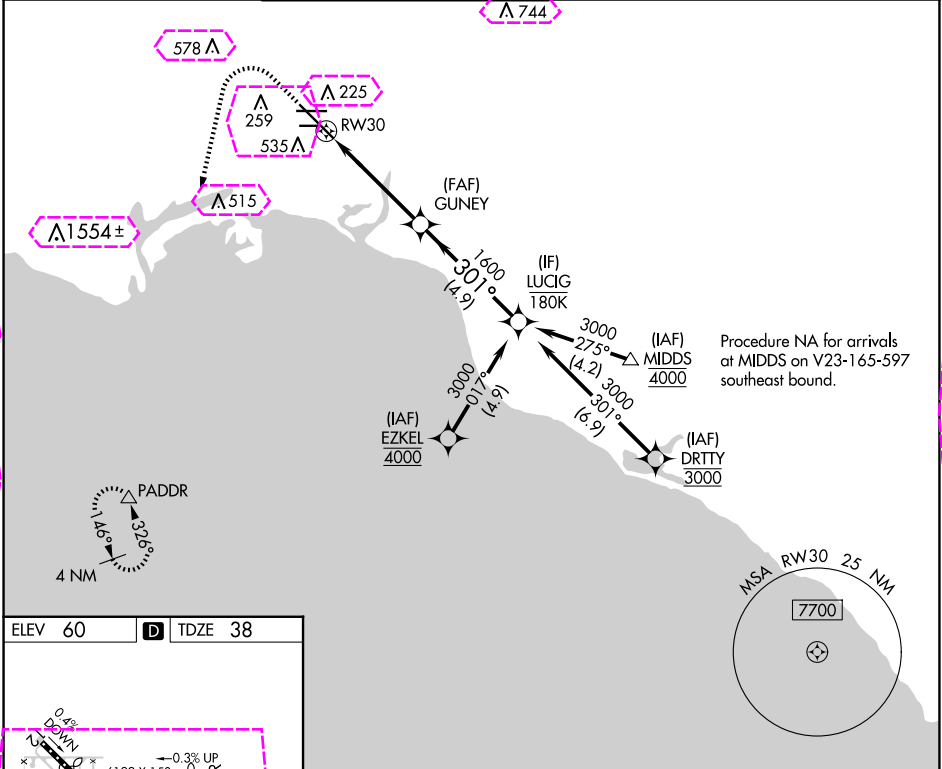
APP CRS	Rwy Idg	7414
301°	TDZE	38
	Apt Elev	60

RNAV (RNP) Y RWY 30

LONG BEACH (DAUGHERTY FLD) (LGB)

RNP AR APCH.		MALSR	MISSED APPROACH: Climb to 800 then climbing left turn to 3000 direct PADDR and hold.	
For uncompensated Baro-VNAV systems, procedure NA below 4° C or above 54° C.		A5		

ATIS	SOCAL APP CON	LONG BEACH TOWER*	GND CON	CLNC DEL	UNICOM
127.75	125.35 316.125	120.5 257.6 (Rwy 12) 119.4 (CTAF) 257.6 (Rwy 30)	133.0 257.6	118.15	122.95



800	3000	PADDR	VGSI and RNAV glidepath not coincident (VGSI Angle 3.00/TCH 64).	
			LUCIG	
			GUNEY	
			1600	
			301°	
			3000	
			GP 3.00°	
			TCH 58	
			4.7 NM	
			4.9 NM	
CATEGORY	A	B	C	D
RNP 0.30 DA	384/30 346 (400-5%)			

AUTHORIZATION REQUIRED

LONG BEACH, CALIFORNIA

Amtd 3 28FEB19

33°49'N-118°09'W

LONG BEACH (DAUGHERTY FLD) (LGB)

RNAV (RNP) Y RWY 30

SW-3, 10 JUL 2025 to 07 AUG 2025

SW-3, 10 JUL 2025 to 07 AUG 2025

LONG BEACH, CALIFORNIA

AL-236 (FAA)

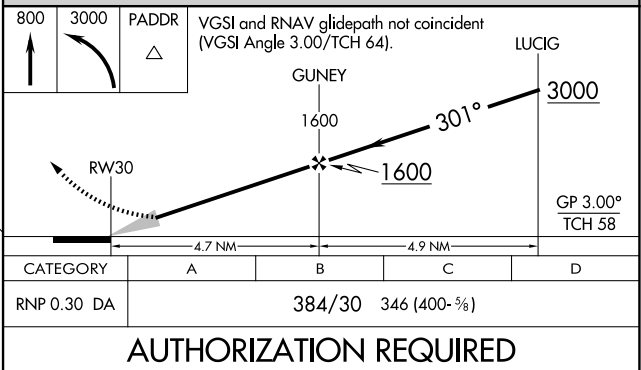
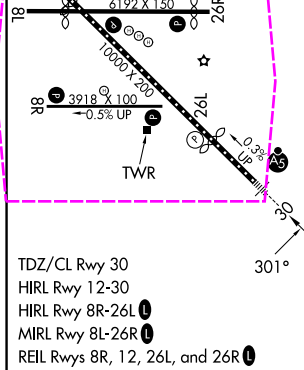
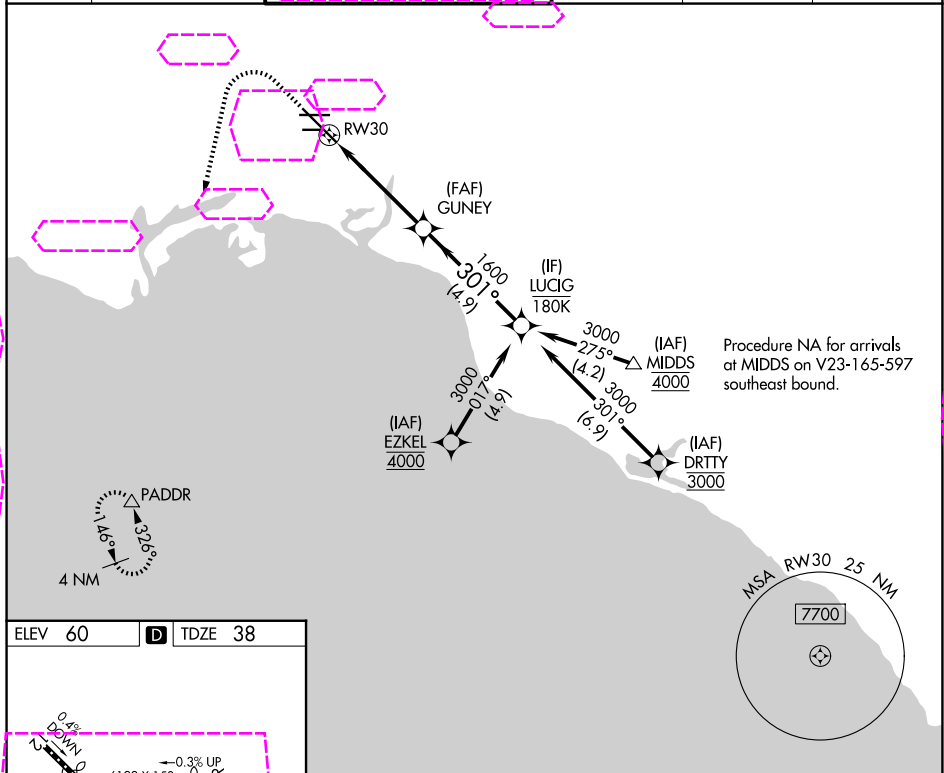
25219

APP CRS	Rwy Ldg	7414
301°	TDZE	38
	Apt Elev	60

RNAV (RNP) Y RWY 30

LONG BEACH (DAUGHERTY FLD) (LGB)

RNP AR APCH.		MALSR	MISSED APPROACH: Climb to 800 then climbing left turn to 3000 direct PADDR and hold.	
For uncompensated Baro-VNAV systems, procedure NA below 4° C or above 54° C.		AS		
ATIS	SOCAL APP CON	LONG BEACH TOWER★		GND CON
127.75	125.35 316.125	120.5 257.6 (12)		133.0 257.6
		119.4 (CTAF) 0 257.6 (30)		CLNC DEL
				118.15
				UNICOM
				122.95



LONG BEACH, CALIFORNIA
Amdt 3 28FEB19

33°49'N-118°09'W

LONG BEACH (DAUGHERTY FLD) (LGB)
RNAV (RNP) Y RWY 30