

APP CRS	Rwy Idg	5660
256°	TDZE	48
	Apt Elev	60

RNAV (RNP) RWY 26R  
LONG BEACH (DAUGHERTY FLD) (LGB)

RNP AR APCH - GPS, RF. Authorization required.
--

**T** For uncompensated Baro-VNAV systems, procedure NA below 4°C or above 54°C.

**MISSED APPROACH:** Climb to 800 then climbing left turn to 3000 direct PADDR and hold, continue climb-in-hold to 3000.

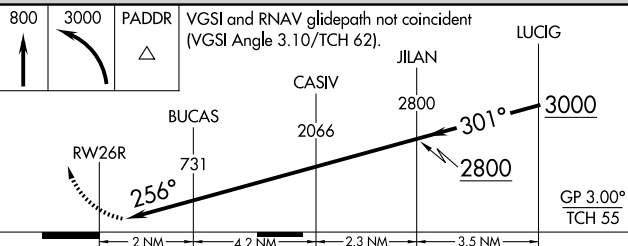
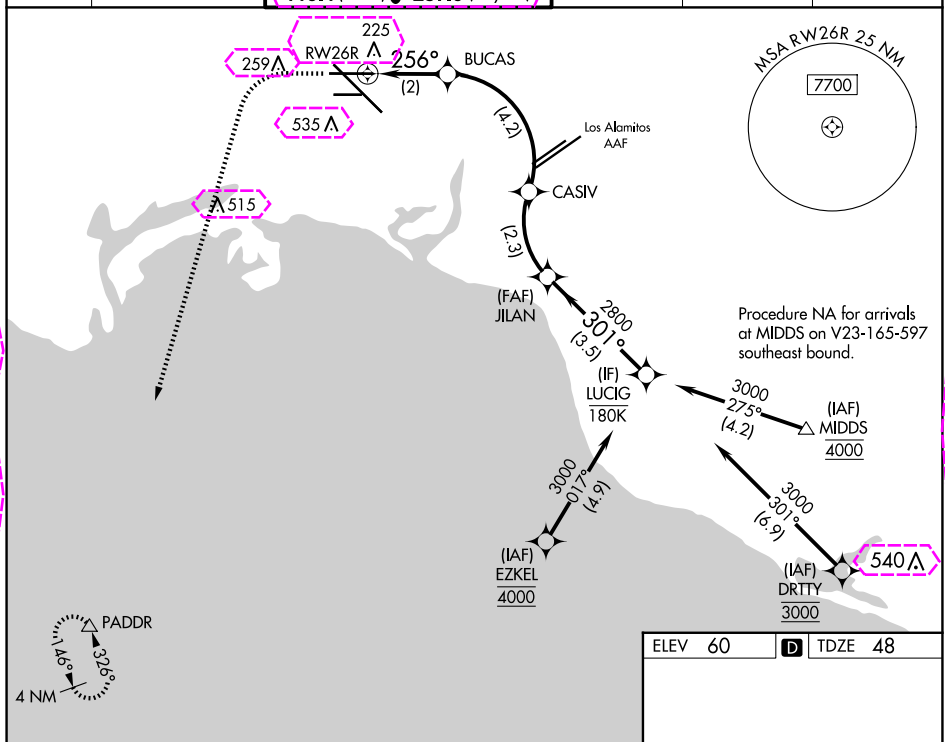
ATIS  
**127.75**

SOCAL APP CON  
**125.35 316.125**

LONG BEACH TOWER★  
120.5 257.6 (Rwy 12)  
119.4 (CTAF) 257.6 (Rwy 30)

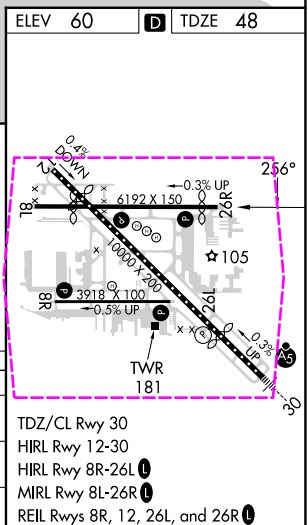
GND CON  
133.0 257.6

CLNC DE  
**118,15**

UNICOM  
122.95

CATEGORY	A	B	C	D
RNP 0.15 DA	324-7/8 276 (300-7/8)			
RNP 0.30 DA	415-1 367 (400-1)			

**AUTHORIZATION REQUIRED**



LONG BEACH, CALIFORNIA  
Amdt 2 26DEC24

33°49'N-118°09'W

LONG BEACH (DAUGHERTY FLD) (LGB)  
RNAV (RNP) RWY 26R

SW-3, 10 JUL 2025 to 07 AUG 2025

SW-3, 10 JUL 2025 to 07 AUG 2025

LONG BEACH, CALIFORNIA

AL-236 (FAA)

25219

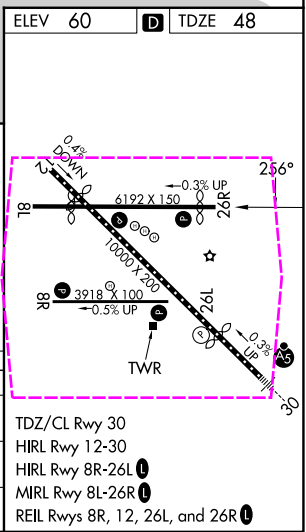
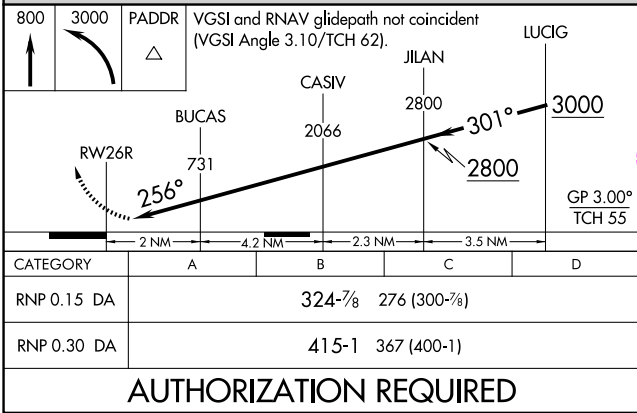
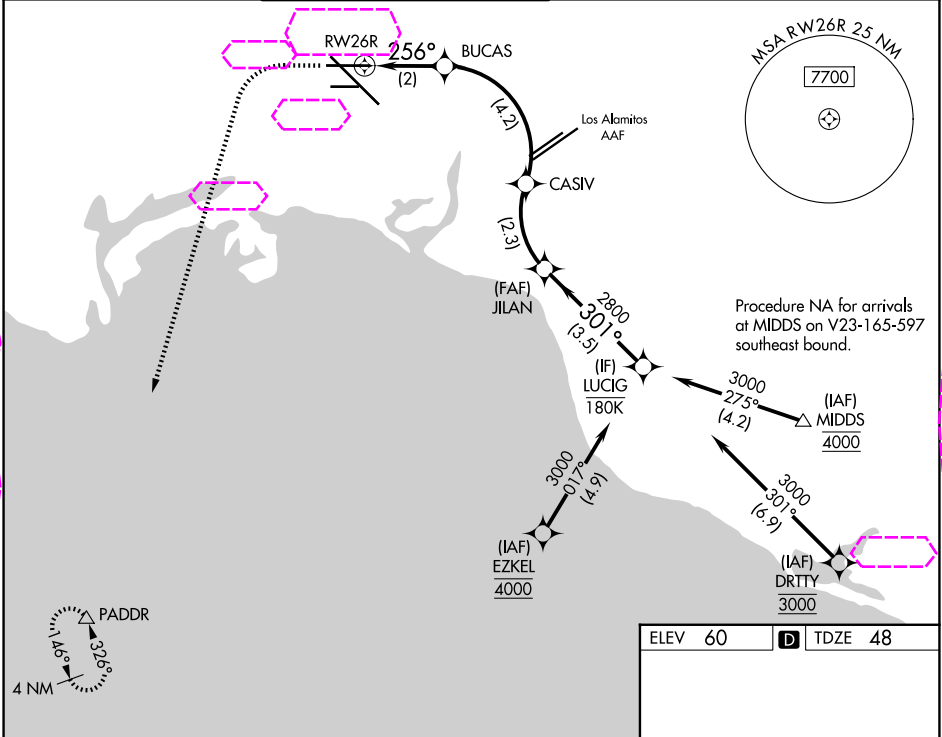
APP CRS	Rwy Ldg	5660
256°	TDZE	48
	Apt Elev	60

# RNAV (RNP) RWY 26R

LONG BEACH (DAUGHERTY FLD) (LGB)

RNP AR APCH - GPS, RF. Authorization required.	MISSED APPROACH: Climb to 800 then climbing left turn to 3000 direct PADDR and hold, continue climb-in-hold to 3000.
For uncompensated Baro-VNAV systems, procedure NA below 4°C or above 54°C.	

ATIS 127.75	SOCAL APP CON 125.35 316.125	LONG BEACH TOWER* 120.5 257.6 (12) 119.4 (CTAF) 0 257.6 (30)	GND CON 133.0 257.6	CLNC DEL 118.15	UNICOM 122.95
----------------	---------------------------------	--	------------------------	--------------------	------------------



**AUTHORIZATION REQUIRED**

TDZ/CL Rwy 30  
HIRL Rwy 12-30  
HIRL Rwy 8R-26L  
MIRL Rwy 8L-26R  
REIL Rwy 8R, 12, 26L, and 26R

LONG BEACH, CALIFORNIA

Amtd 2 26DEC24

33°49'N-118°09'W

LONG BEACH (DAUGHERTY FLD) (LGB)

**RNAV (RNP) RWY 26R**