

LONG BEACH, CALIFORNIA

AL-236 (FAA)

23054

APP CRS	Rwy Idg	8650
121°	TDZE	53
	Apt Elev	60

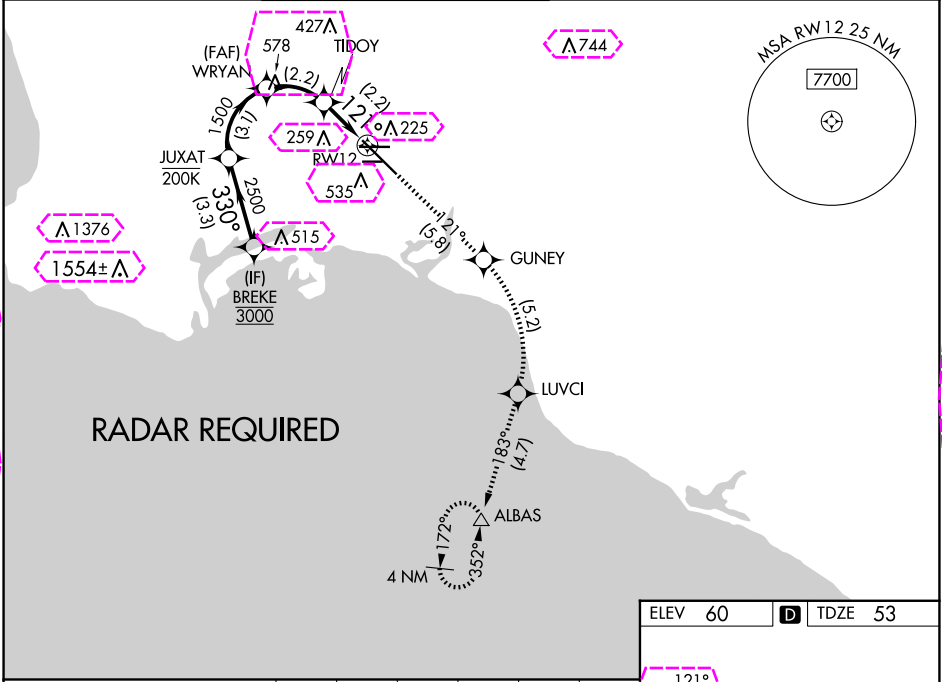
# RNAV (RNP) RWY 12

LONG BEACH (DAUGHERTY FLD) (LGB)

**⚠** For uncompensated Baro-VNAV systems, procedure NA below 4°C (40°F) or above 54°C (130°F).  
RF required. GPS required.

MISSED APPROACH: Climb to 3000 on track 121° to GUNEY, right turn to LUVCI, and on track 183° to ALBAS and hold.

ATIS	SOCAL APP CON	LONG BEACH TOWER*	GND CON	CLNC DEL	UNICOM
127.75	125.35 316.125	120.5 257.6 (Rwy 12) 119.4 (CTAF) 257.6 (Rwy 30)	133.0 257.6	118.15	122.95



BREKE		JUXAT		WRYAN		TIDOY		RW12	
3000		2500		1500		794		121°	
GP 3.00°		TCH 47		3.3 NM		3.1 NM		2.2 NM	
CATEGORY	A	B	C	D					
RNP 0.15 DA	414-1¼		361 (400-1¼)						
RNP 0.30 DA	485-1½		432 (500-1½)						
AUTHORIZATION REQUIRED									
TDZ/CL Rwy 30 HIRL Rwy 12-30 HIRL Rwy 8R-26L MIRL Rwy 8L-26R REIL Rws 8R, 12, 26L, and 26R									

LONG BEACH, CALIFORNIA

AL-236 (FAA)

25219

APP CRS	Rwy Ldg	8650
121°	TDZE	53
	Apt Elev	60

# RNAV (RNP) RWY 12

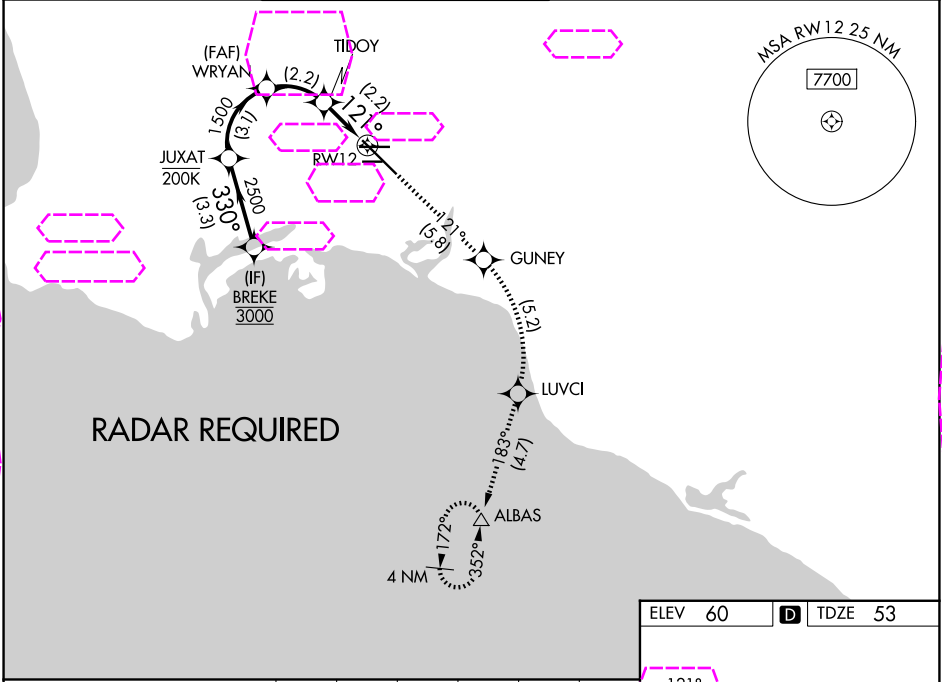
LONG BEACH (DAUGHERTY FLD) (LGB)

**⚠**

For uncompensated Baro-VNAV systems, procedure NA below 4°C (40°F) or above 54°C (130°F).  
RF required. GPS required.

MISSED APPROACH: Climb to 3000 on track 121° to GUNEY, right turn to LUVCI, and on track 183° to ALBAS and hold.

ATIS	SOCAL APP CON	LONG BEACH TOWER*	GND CON	CLNC DEL	UNICOM
127.75	125.35 316.125	120.5 257.6 (12) 119.4 (CTAF) 0 257.6 (30)	133.0 257.6	118.15	122.95



	BREKE	JUXAT	WRYAN	TIDOY	RW12
	3000	2500	1500	794	
	GP 3.00° TCH 47				
	3.3 NM	3.1 NM	2.2 NM	2.2 NM	
CATEGORY	A	B	C	D	
RNP 0.15 DA		414-1¼	361 (400-1¼)		
RNP 0.30 DA		485-1½	432 (500-1½)		
AUTHORIZATION REQUIRED					

ELEV 60 TDZE 53

121°

6192 X 150

1000 X 300

3218 X 100

TWR

TDZ/CL Rwy 30

HIRL Rwy 12-30

HIRL Rwy 8R-26L

MIRL Rwy 8L-26R

REIL Rwys 8R, 12, 26L, and 26R