

LOC FLGB 110.3	APP CRS 301°	Rwy Idg TDZE Apt Elev	7414 38 60
--------------------------	------------------------	-----------------------------	---------------------------------------

ILS or LOC RWY 30

LONG BEACH (DAUGHERTY FLD) (LGB)

From EZKEL: RNAV 1-GPS required.

T For inop ALS, increase S-LOC 30 Cats C/D visibility
A to $1\frac{3}{8}$ SM.

MALSR

A5

MISSED APPROACH: Climb to 800 then climbing left turn to 3000 on heading 200° and LAX VORTAC R-145 to PADDR INT/LAX 21.8 DME and hold.

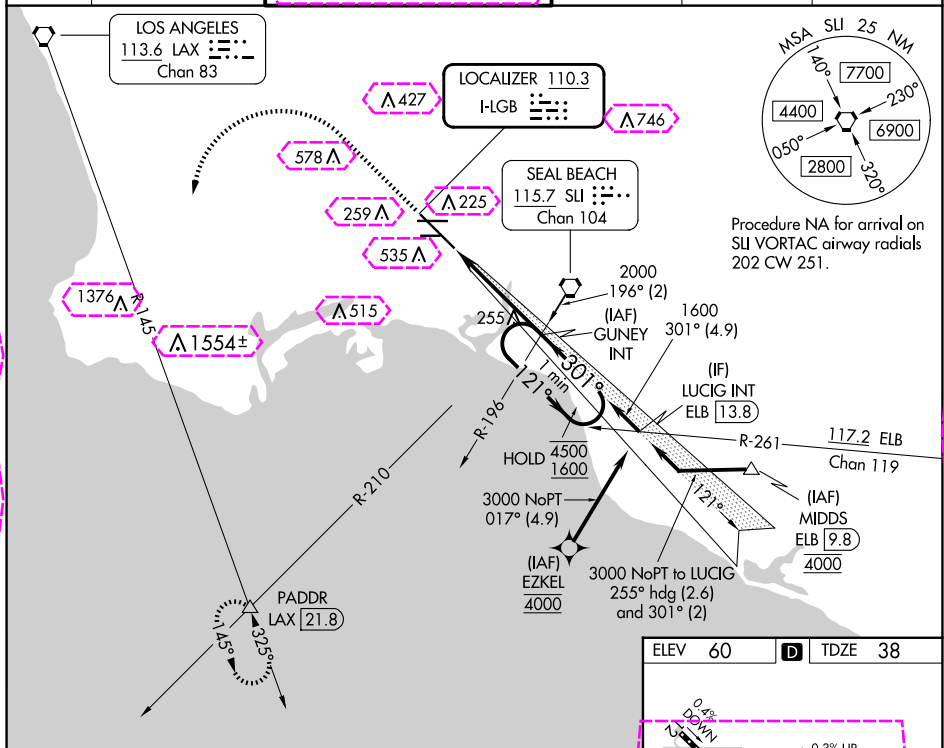
ATIS
127.75

SOCAL APP CON
125.35 316.125

LONG BEACH TOWER ★
120.5 257.6 (Rwy 12)
119.4 (CTAF) 257.6 (Rwy 30)

GND CON
133.0 257.6

CLNC DEL
118.15

UNICOM
122.95


800 ↑	3000 ← hdg 200°	LAX R-145	PADDR △
----------	--------------------------	--------------	------------

VGSI and ILS glidepath not coincident (VGSI Angle 3.00/TCH 64).

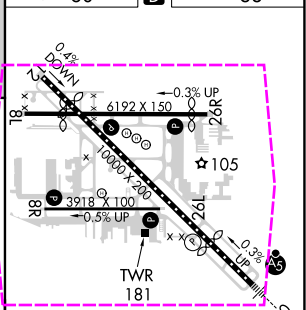
Diagram illustrating a One Minute Holding Pattern. The pattern is defined by a 121° outbound leg and a 301° inbound leg. The altitude is 1600. The pattern is labeled "One Minute Holding Pattern". The diagram also shows the "GUNBY INT" and "GS 3.0" and "TCH 5".

One Minute Holding Pattern

GS 3.00
TCH 5

CATEGORY		A	B	C	D
S-ILS 30	258/18 220 (200-½)				
S-LOC 30	520/24 482 (500-½)			520/50 482 (500-1)	
 CIRCLING	840-1 780 (800-1)			840-2¼ 780 (800-2¼)	840-2½ 780 (800-2½)


ELEV 60	D	TDZE 38
---------	----------	---------



TDZ/CL Rwy 30

HIRL Rwy 12-30

HIRE Rwy 8R-261

MIRI Rwy 81-26R 

REF. PAGES 8P 12 1

FAF: MAR 13 NM

FAF to MAP 4.7 NM				
1.0	1.2	2.2	0.00	0

Knots	60	90	120	150	180
-------	----	----	-----	-----	-----

Min:Sec	4:42	3:08	2:21	1:53	1:34
---------	------	------	------	------	------

LONG BEACH, CALIFORNIA

Amdt 35 28FEB19

33°49'N-118°09'W

LONG BEACH (DAUGHERTY FLD) (LGB)

ILS or LOC RWY 30

LONG BEACH, CALIFORNIA

AL-236 (FAA)

25219

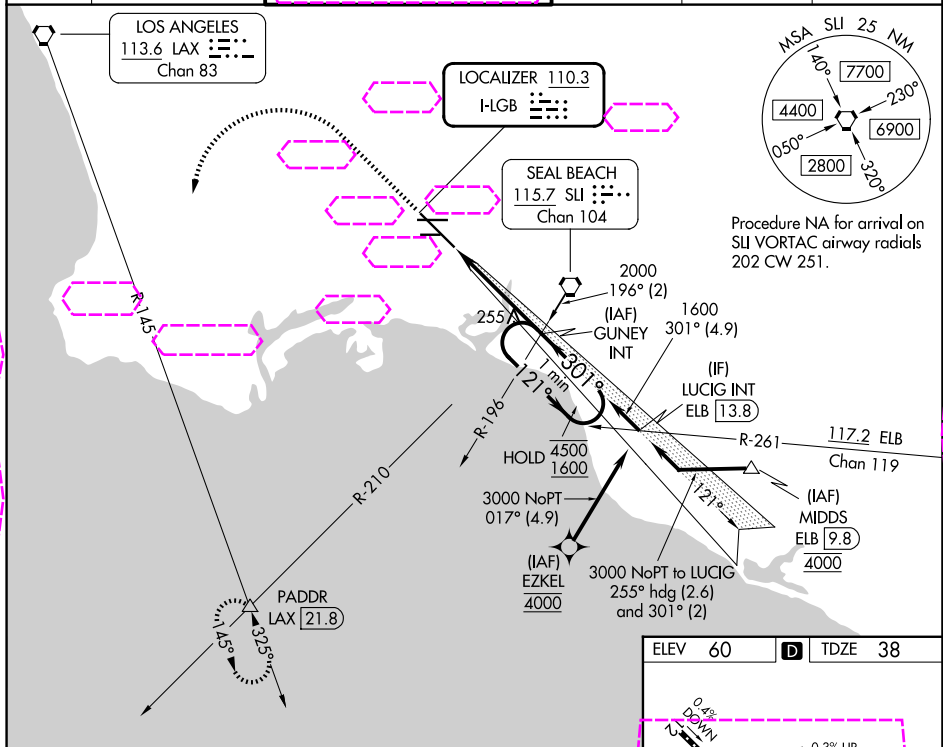
LOC I-LGB	APP CRS	Rwy Ldg	7414
110.3	301°	TDZE	38
		Apt Elev	60

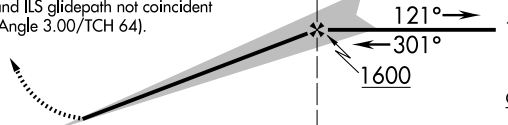
ILS or LOC RWY 30

LONG BEACH (DAUGHERTY FLD) (I.L.G.B)

From EZKEL: RNAV 1-GPS required.	MALSR	MISSED APPROACH: Climb to 800 then climbing left turn to 3000 on heading 200° and LAX VORTAC R-145 to PADDR INT/LAX 21.8 DME and hold.
For inop ALS, increase S-LOC 30 Cats C/D visibility to 1½ SM.	AS	

ATIS	SOCAL APP CON	LONG BEACH TOWER ★	GND CON	CLNC DEL	UNICOM
127.75	125.35 316.125	120.5 257.6 (12) 119.4 (CTAF) 257.6 (30)	133.0 257.6	118.15	122.95



800	3000	LAX	PADDR	
↑	hdg 200°	R-145	△	
VGSI and ILS glidepath not coincident (VGSI Angle 3.00/TCH 64).				
One Minute Holding Pattern				
				
CATEGORY	A	B	C	D
S-ILS 30	258/18		220 (200-½)	
S-LOC 30	520/24	482 (500-½)	520/50	482 (500-1)
CIRCLING	840-1	780 (800-1)	840-2¼ 780 (800-2¼)	840-2½ 780 (800-2½)

ELEV 60	D	TDZE 38
TDZ/CL Rwy 30		
HIRL Rwy 12-30		
HIRL Rwy 8R-26L		
MIRL Rwy 8L-26R		
REIL Rwy 8R, 12, 26L, and 26R		
FAF to MAP 4.7 NM		
Knots	60	90 120 150 180
Min:Sec	4:42	3:08 2:21 1:53 1:34

LONG BEACH, CALIFORNIA

Amdt 35 28FEB19

33°49'N-118°09'W

LONG BEACH (DAUGHERTY FLD) (I.L.G.B)

ILS or LOC RWY 30