

WAAS CH 70611 W04B	APP CRS 046°	Rwy Ldg 7200 TDZE 260 Apt Elev 266
--	------------------------	---

RNAV (GPS) RWY 4R
BILL AND HILLARY CLINTON NTL/ADAMS FLD (LIT)

RNP APCH-GPS.

▼ Rwy 4R helicopter visibility reduction below RVR 4000 NA. For uncompensated Baro-VNAV systems, LNAV/VNAV NA below -15°C or above 54°C.

▲ Simultaneous approach authorized. LNAV procedure NA during simultaneous operations. Use of FD or AP required during simultaneous operations. For inop ALS, increase LPV all Cats visibility to RVR 4500, LNAV/VNAV all Cats visibility to 1% SM and LNAV Cat A/B visibility to RVR 5500 and Cat C/D to 1% SM.

MALSR

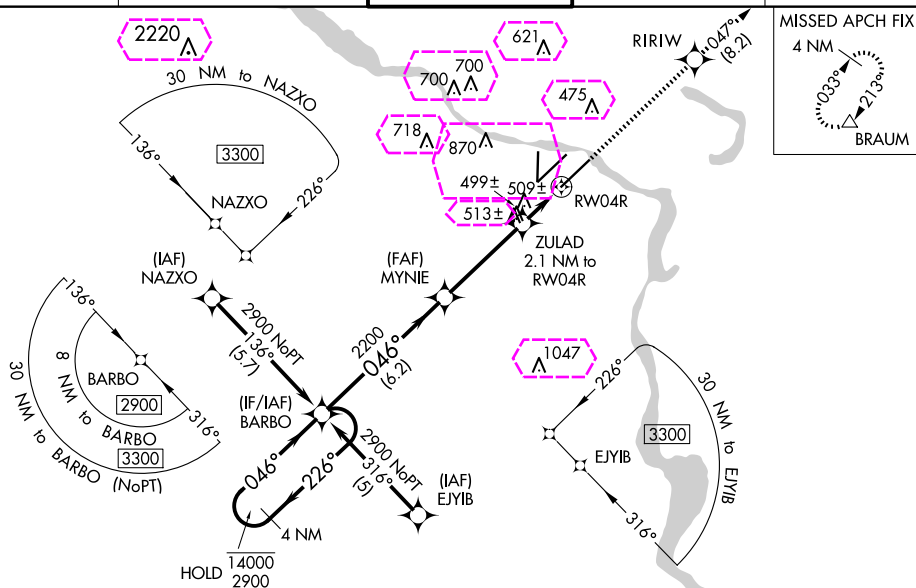
MISSED APPROACH:
Climb to 2900 direct
RIRIW and on track 047°
to BRAUM and hold.

D-ATIS
125.65

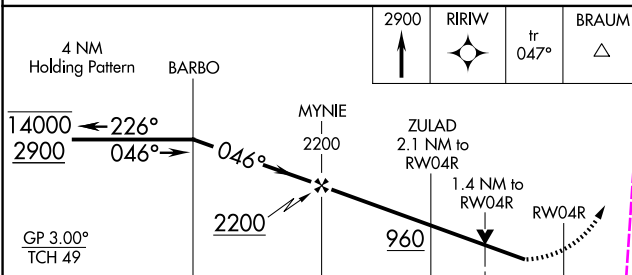
LITTLE ROCK APP CON
135.4 353.6


ADAMS TOWER
118.7 257.8

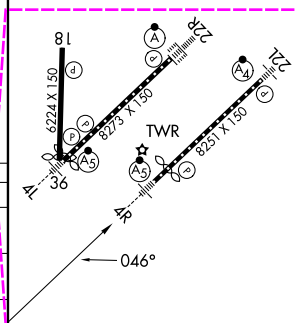
GND CON
121.9 339.8

CLNC DEL
118.95

ELEV 266		TDZE 260
----------	---	----------



CATEGORY		A	B	C	D
LPV	DA	574/40		314 (400-3/4)	
LNAV/ VNAV	DA	756/50		496 (500-1)	
LNAV	MDA	760/40 500 (500-3/4)		760/50 500 (500-1)	
 CIRCLING		820-1 554 (600-1)	1000-1 734 (800-1)	1180-2 3/4 914 (1000-2 3/4)	1180-3 914 (1000-3)



LITTLE ROCK, ARKANSAS
Amdt 1G 15JUN23

BILL AND HILLARY CLINTON NTL/ADAMS FLD (LIT)
34°44'N-92°13'W BNAV (CPS) BWV 1D

RNAV (GPS) RWY 4R

SC-1, 10 JUL 2025 to 07 AUG 2025

SC-1, 10 JUL 2025 to 07 AUG 2025

