



LITTLE ROCK, ARKANSAS

AL-233 (FAA)

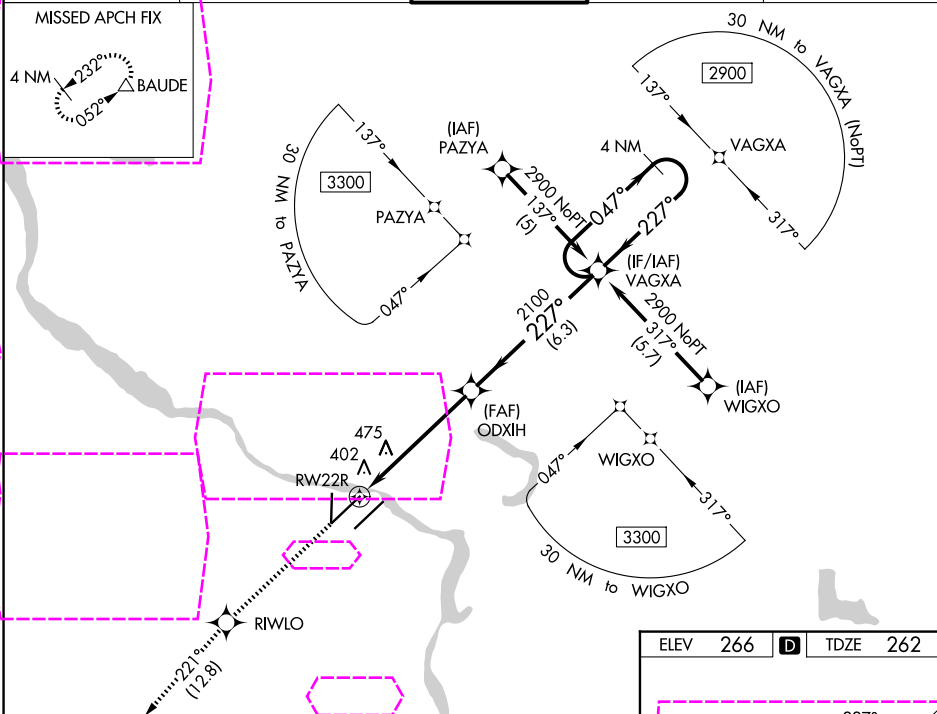
25219

WAAS CH <b>93811</b> <b>W22B</b>	APP CRS <b>227°</b>	Rwy Ldg TDZE Apt Elev	<b>8273</b> <b>262</b> <b>266</b>
--	------------------------	-----------------------------	---

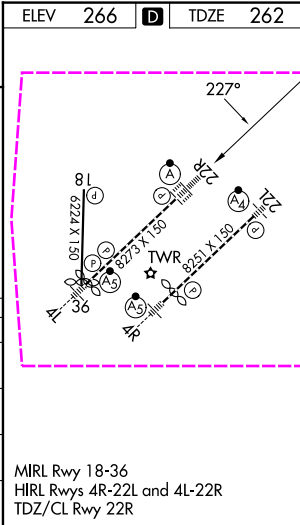
# RNAV (GPS) RWY 22R

BILL AND HILLARY CLINTON NTL/ADAMS FLD (LIT)

RNP APCH.		ALS-F-2	MISSED APPROACH: Climb to 2900 direct RIWLO and on track 221° to BAUDE and hold.	
⚠ For uncompensated Baro-VNAV systems, LNAV/VNAV NA below -15°C or above 48°C.				
D-ATIS <b>125.65</b>	LITTLE ROCK APP CON <b>135.4 353.6</b>	ADAMS TOWER <b>118.7 257.8</b>	GND CON <b>121.9 339.8</b>	CLNC DEL <b>118.95</b>



2900	RIWLO	tr 221°	BAUDE			
*LNAV only.				GP 3.00° TCH 59		
1.3 NM				4.2 NM	6.3 NM	
CATEGORY	A		B		C	D
LPV DA	462/18		200 (200-½)			
LNAV/VNAV DA	727/50		465 (500-1)			
LNAV MDA	740/24	478 (500-½)	740/50		478 (500-1)	
CIRCLING	820-1 554 (600-1)	1000-1 734 (800-1)	1180-2¾ 914 (1000-2¾)		1180-3 914 (1000-3)	



LITTLE ROCK, ARKANSAS  
Amdt 1D 11OCT18

BILL AND HILLARY CLINTON NTL/ADAMS FLD (LIT)  
34°44'N-92°13'W

# RNAV (GPS) RWY 22R

SC-1, 07 AUG 2025 to 04 SEP 2025

SC-1, 07 AUG 2025 to 04 SEP 2025