

LITTLE ROCK, ARKANSAS

AL-233 (FAA)

25163

WAAS CH 42811 W22A	APP CRS 227°	Rwy Ldg TDZE 260 Apt Elev 266
--	------------------------	---

RNAV (GPS) RWY 22L

BILL AND HILLARY CLINTON NTL/ADAMS FLD (LIT)

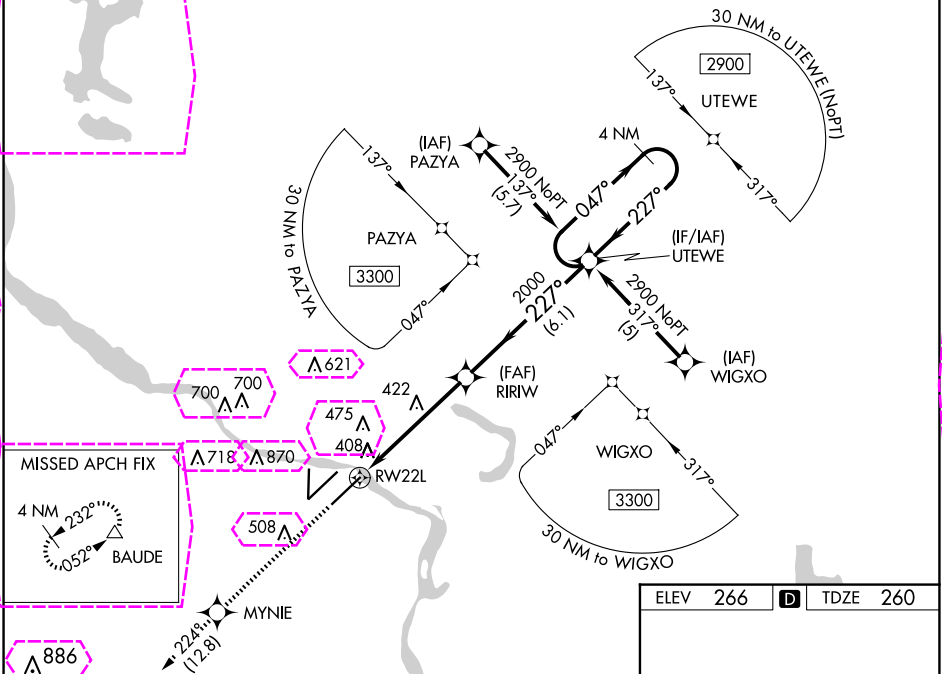
RNP APCH.

For uncompensated Baro-VNAV systems, LNAV/VNAV NA below -15°C or above 48°C.
▼ Rwy 22L helicopter visibility reduction below ¾ SM NA. Inop table does not apply to LPV, LNAV/VNAV or LNAV Cat C and D. For inop ALS, increase LNAV Cat A and B visibility to RVR 5000. Simultaneous approach authorized. LNAV procedure NA during simultaneous operations. Use of FD or AP required during simultaneous operations.

MALSF
A5

MISSED APPROACH:
Climb to 2900 direct MYNIE and on track 224° to BAUDE and hold.

D-ATIS 125.65	LITTLE ROCK APP CON 135.4 353.6	ADAMS TOWER 118.7 257.8	GND CON 121.9 339.8	CLNC DEL 118.95
-------------------------	---	-----------------------------------	-------------------------------	---------------------------



ELEV 266 D TDZE 260

2900 MYNIE tr 224° BAUDE

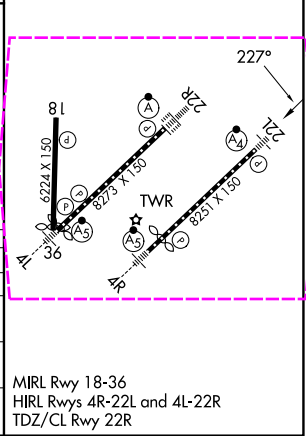
*LNAV only.

RW22L 1.2 NM 4 NM 6.1 NM

UTWE 4 NM Holding Pattern

GP 3.00° TCH 50

CATEGORY	A	B	C	D
LPV DA		543/50	283 (300-1)	
LNAV/VNAV DA		774-1¾	514 (600-1¾)	
LNAV MDA	680/40	420 (500-¾)	680/60	420 (500-1¼)
CIRCLING	820-1 554 (600-1)	1000-1 734 (800-1)	1180-2¾ 914 (1000-2¾)	1180-3 914 (1000-3)



LITTLE ROCK, ARKANSAS

AL-233 (FAA)

25219

WAAS CH 42811 W22A	APP CRS 227°	Rwy Ldg TDZE Apt Elev	7200 260 266
--	------------------------	-----------------------------	---

RNAV (GPS) RWY 22L

BILL AND HILLARY CLINTON NTL/ADAMS FLD (LIT)

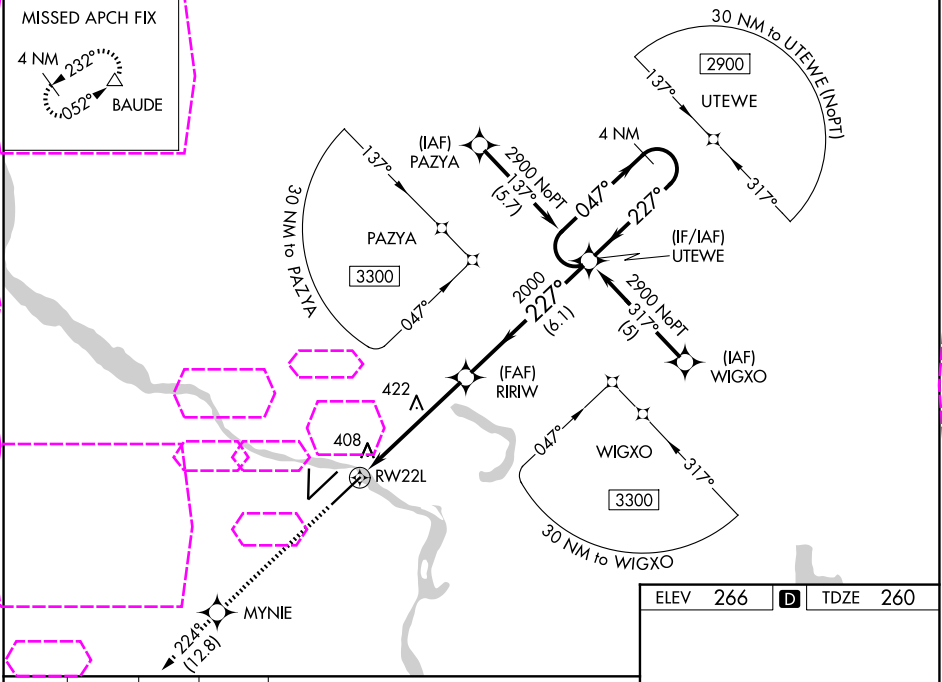
RNP APCH.

For uncompensated Baro-VNAV systems, LNAV/VNAV NA below -15°C or above 48°C.
▼ Rwy 22L helicopter visibility reduction below ¾ SM NA. Inop table does not apply to LPV, LNAV/VNAV or LNAV Cat C and D. For inop ALS, increase LNAV Cat A and B visibility to RVR 5000. Simultaneous approach authorized. LNAV procedure NA during simultaneous operations. Use of FD or AP required during simultaneous operations.

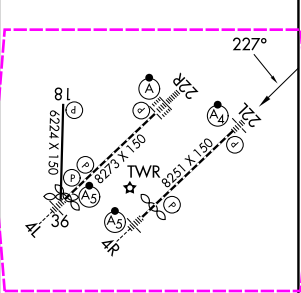
MALSF
A5

MISSED APPROACH:
Climb to 2900 direct MYNIE and on track 224° to BAUDE and hold.

D-ATIS 125.65	LITTLE ROCK APP CON 135.4 353.6	ADAMS TOWER 118.7 257.8	GND CON 121.9 339.8	CLNC DEL 118.95
-------------------------	---	-----------------------------------	-------------------------------	---------------------------



2900 ↑	MYNIE ✧	tr 224° △	BAUDE		UTEWE 4 NM Holding Pattern	
*LNAV only.						
RW22L ↻		*1.2 NM to RW22L	RIRIW 2000	2000	047° → ← 227°	2900
		1.2 NM	4 NM	6.1 NM	GP 3.00° TCH 50	
CATEGORY	A		B		C	D
LPV DA			543/50		283 (300-1)	
LNAV/VNAV DA			774-1¾		514 (600-1¾)	
LNAV MDA	680/40		420 (500-¾)		680/60 420 (500-1¼)	
CIRCLING	820-1 554 (600-1)		1000-1 734 (800-1)		1180-2¾ 914 (1000-2¾) 1180-3 914 (1000-3)	



MIRL Rwy 18-36
HIRL Rwys 4R-22L and 4L-22R
TDZ/CL Rwy 22R

LITTLE ROCK, ARKANSAS
Amdt 1F 16JUL20

BILL AND HILLARY CLINTON NTL/ADAMS FLD (LIT)
34°44'N-92°13'W
RNAV (GPS) RWY 22L

SC-1, 07 AUG 2025 to 04 SEP 2025

SC-1, 07 AUG 2025 to 04 SEP 2025