

LITTLE ROCK, ARKANSAS

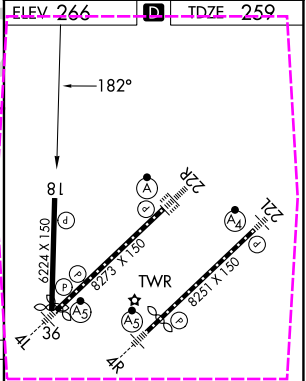
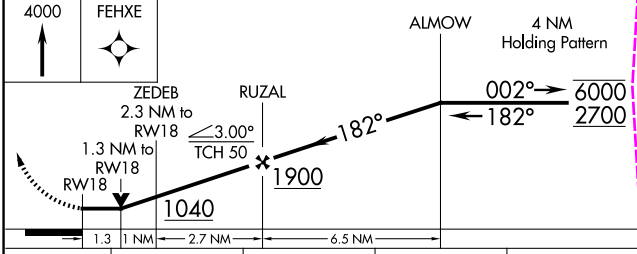
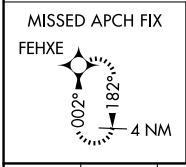
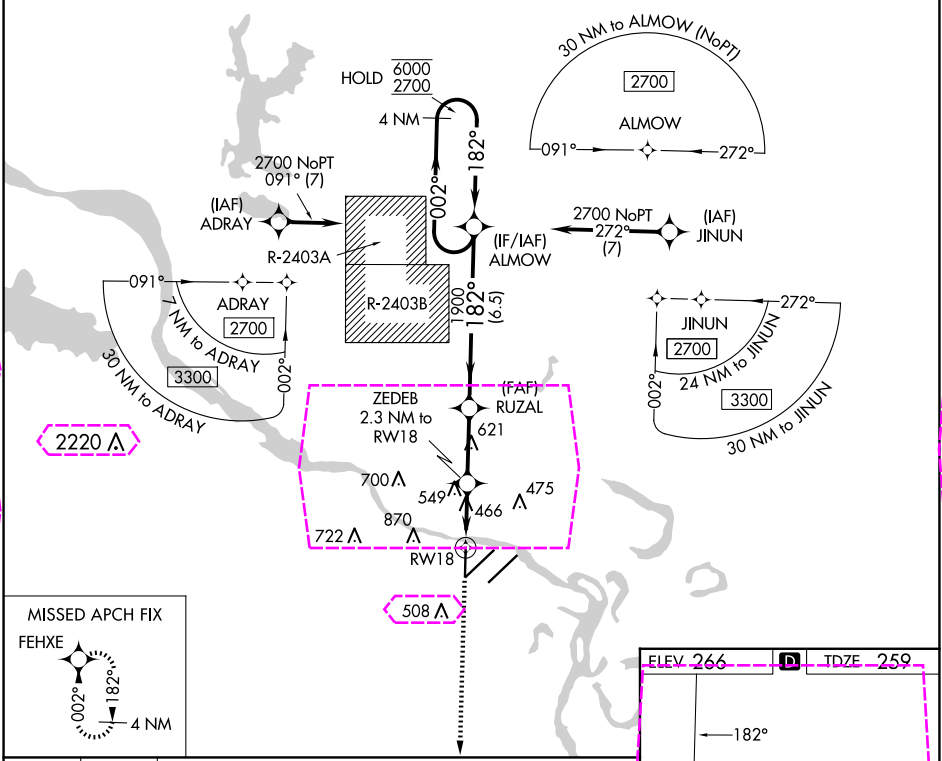
AL-233 (FAA)

25163

WAAS CH 45624 W18A	APP CRS 182°	Rwy Ldg TDZE 259 Apt Elev 266	6060
--	------------------------	---	-------------

RNAV (GPS) RWY 18
BILL AND HILLARY CLINTON NTL/ADAMS FLD (LIT)

RNP APCH - GPS.		MISSED APPROACH: Climb to 4000 direct FEHXE and hold, continue climb-in-hold to 4000.		
▼ Rwy 18 helicopter visibility reduction below ¾ SM NA. Procedure NA when restricted ▲ areas R-2403A/B in effect.				
D-ATIS 125.65	LITTLE ROCK APP CON 135.4 353.6	ADAMS TOWER 118.7 257.8	GND CON 121.9 339.8	CLNC DEL 118.95



CATEGORY	A	B	C	D
LP MDA	720-1 461 (500-1)	720-1 461 (500-1)	720-1 461 (500-1)	720-1 461 (500-1)
LNAV MDA	820-1 561 (600-1)	820-1 561 (600-1)	820-1 561 (600-1)	820-1 561 (600-1)
CIRCLING	820-1 554 (600-1)	1000-1 734 (800-1)	1180-2 914 (1000-2)	1180-3 914 (1000-3)

MIRL Rwy 18-36
HIRL Rwys 4R-22L and 4L-22R
TDZ/CL Rwy 22R

LITTLE ROCK, ARKANSAS
Amdt 2 25JAN24

BILL AND HILLARY CLINTON NTL/ADAMS FLD (LIT)
34°44'N-92°13'W
RNAV (GPS) RWY 18

SC-1, 10 JUL 2025 to 07 AUG 2025

SC-1, 10 JUL 2025 to 07 AUG 2025

LITTLE ROCK, ARKANSAS

AL-233 (FAA)

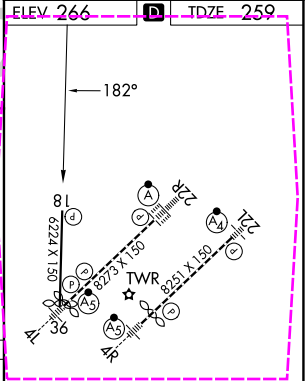
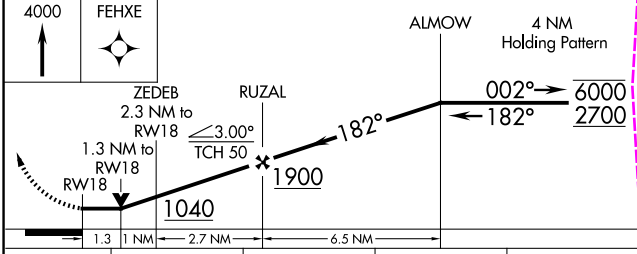
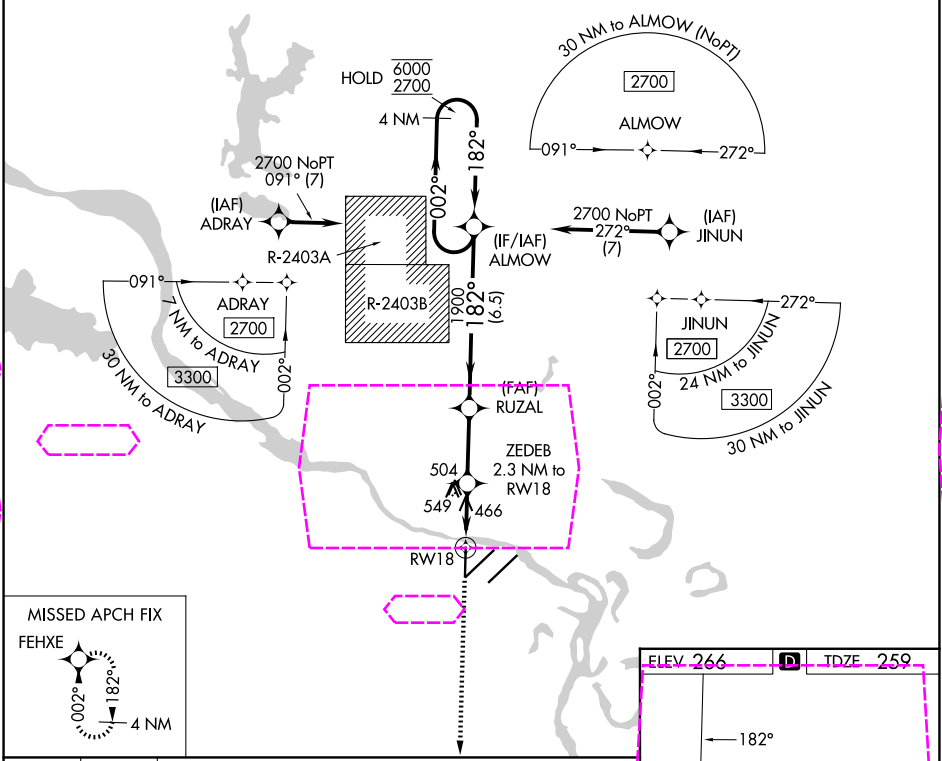
25219

WAAS CH 45624 W18A	APP CRS 182°	Rwy Ldg TDZE 259 Apt Elev 266	6060 259 266
--	------------------------	---	---

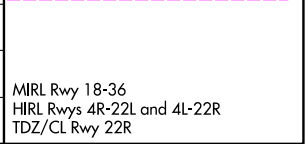
RNAV (GPS) RWY 18

BILL AND HILLARY CLINTON NTL/ADAMS FLD (LIT)

RNP APCH - GPS.		MISSED APPROACH: Climb to 4000 direct FEHXE and hold, continue climb-in-hold to 4000.		
▼ Rwy 18 helicopter visibility reduction below ¾ SM NA. Procedure NA when restricted ▲ areas R-2403A/B in effect.				
D-ATIS 125.65	LITTLE ROCK APP CON 135.4 353.6	ADAMS TOWER 118.7 257.8	GND CON 121.9 339.8	CLNC DEL 118.95



CATEGORY	A	B	C	D
LP MDA	720-1 461 (500-1)	720-1 ³ / ₈ 461 (500-1 ³ / ₈)		
LNAV MDA	820-1 561 (600-1)	820-1 ⁵ / ₈ 561 (600-1 ⁵ / ₈)		
CIRCLING	820-1 554 (600-1)	1000-1 734 (800-1)	1180-2 ³ / ₄ 914 (1000-2 ³ / ₄)	1180-3 914 (1000-3)



LITTLE ROCK, ARKANSAS
Amdt 2 25JAN24

BILL AND HILLARY CLINTON NTL/ADAMS FLD (LIT)
34°44'N-92°13'W
RNAV (GPS) RWY 18