

LOC/DME I-CNL 111.3 Chan 50	APP CRS 047°	Rwy Ldg 7200 TDZE 260 Apt Elev 266
---	------------------------	---

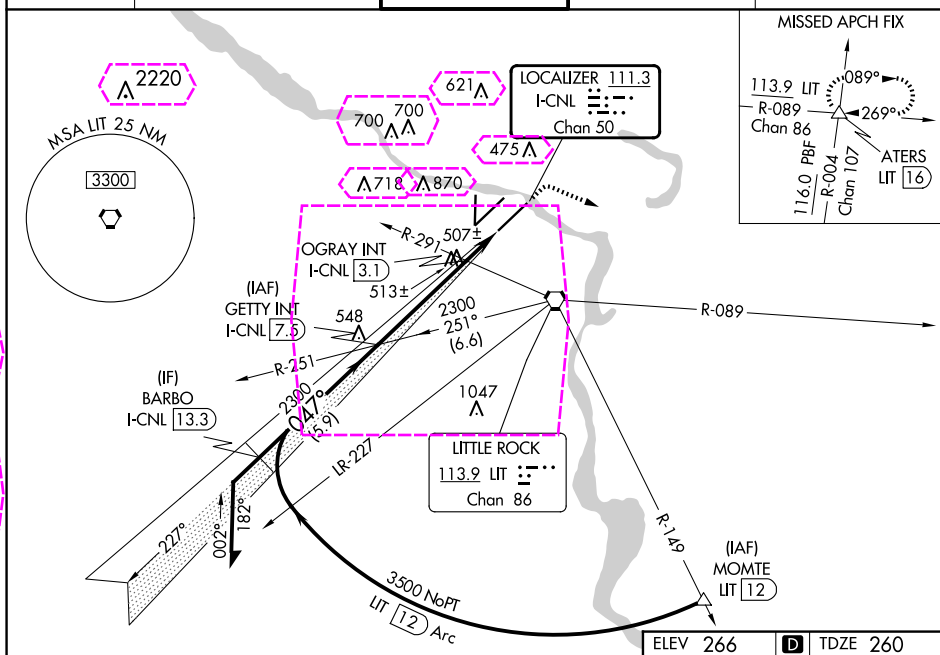
ILS or LOC RWY 4R
BILL AND HILLARY CLINTON NTL/ADAMS FLD (LIT)



T Rwy 4R helicopter visibility reduction below RVR 4000 NA. Simultaneous approach authorized. For inop ALS, increase S-ILS 4R all Cats visibility to RVR 4500. For inop ALS, increase S-LOC 4R Cats A/B visibility to RVR 5500 and Cats C/D visibility to 1 $\frac{3}{4}$ SM. OGRAY Fix Minimums: For inop ALS, increase S-LOC 4R Cats A/B visibility to RVR 5500 and Cats C/D to 1 $\frac{3}{4}$ SM.

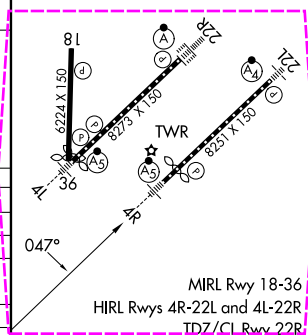


MISSED APPROACH: Climb to 800 then climbing right turn to 4000 on heading 110° and LIT VORTAC R-089 to ATERS INT/UT 16 DME and hold.

D-ATIS 125.65	LITTLE ROCK APP CON 135.4 353.6	ADAMS TOWER 118.7 257.8	GND CON 121.9 339.8	CLNC DEL 118.95
-------------------------	---	-----------------------------------	-------------------------------	---------------------------

[illegible]

CATEGORY	A	B	C	D
S-ILS 4R		523/40	263 (300-¾)	
S-LOC 4R	880/40	620 (700-¾)	880-1⅜	620 (700-1⅜)
 CIRCLING	880-1 614 (700-1)	1000-1 734 (800-1)	1180-2¾ 914 (1000-2¾)	1180-3 914 (1000-3)
OGRAY (DUAL VOR RECEIVERS OR DME REQUIRED)				
S-LOC 4R	780/40	520 (600-¾)	780/55	520 (600-1)
 CIRCLING	820-1 554 (600-1)	1000-1 734 (800-1)	1180-2¾ 914 (1000-2¾)	1180-3 914 (1000-3)



FAF to MAP 6.1 NM					
Knots	60	90	120	150	180
Min:Sec	6:06	4:04	3:03	2:26	2:02

SC-1, 10 JUL 2025 to 07 AUG 2025

SC-1, 10 JUL 2025 to 07 AUG 2025

