

LITTLE ROCK, ARKANSAS

AL-233 (FAA)

25163

LOC/DME I-LIT 110.3 Chan 40	APP CRS 047°	Rwy Ldg 7976 TDZE 258 Apt Elev 266
---	------------------------	---

ILS or LOC RWY 4L

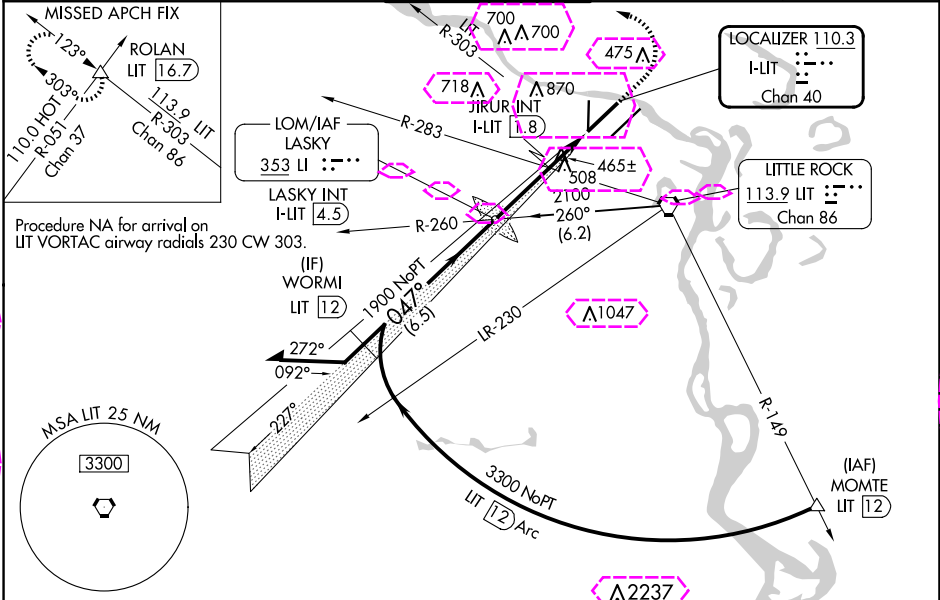
BILL AND HILLARY CLINTON NTL/ADAMS FLD (LIT)

Simultaneous approach authorized. Rwy 4L helicopter visibility reduction below RVR 4000 NA. Inop table does not apply to S-ILS 4L all Cats. LOC minimums: For inop ALS, increase S-LOC 4L Cats A/B visibility to 1 SM and Cats C/D visibility to 2 SM. JIRUR fix minimums: For inop ALS, increase S-LOC 4L Cats A/B visibility to 1 SM and Cats C/D visibility to 1 3/4 SM.

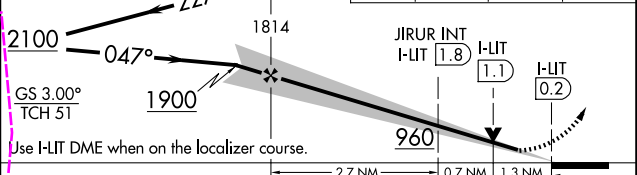
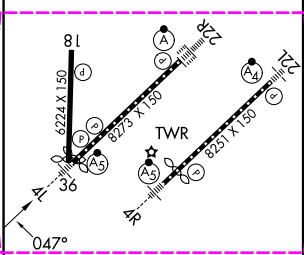
MALSR

MISSED APPROACH: Climb to 1500 then climbing left turn to 3500 on heading 260° and on LIT VORTAC R-303 to ROLAN INT/LIT 16.7 DME and hold.

D-ATIS 125.65	LITTLE ROCK APP CON 135.4 353.6	ADAMS TOWER 118.7 257.8	GND CON 121.9 339.8	CLNC DEL 118.95
-------------------------	---	-----------------------------------	-------------------------------	---------------------------



ELEV 266	D	TDZE 258	LI LOM LASKY INT I-LIT 4.5	1500	3500	LIT R-303	ROLAN
----------	---	----------	----------------------------	------	------	-----------	-------



CATEGORY	A	B	C	D
S-ILS 4L	508/40 250 (300-3/4)			
S-LOC 4L	960/40	702 (700-3/4)	960-1 5/8	702 (700-1 5/8)
CIRCLING	960-1	1000-1	1180-2 3/4	1180-3
	694 (700-1)	734 (800-1)	914 (1000-2 3/4)	914 (1000-3)
JIRUR FIX MINIMUMS (DUAL VOR RECEIVERS OR DME REQUIRED)				
S-LOC 4L	720/40	462 (500-3/4)	720/50	462 (500-1)
CIRCLING	820-1	1000-1	1180-2 3/4	1180-3
	554 (600-1)	734 (800-1)	914 (1000-2 3/4)	914 (1000-3)

MIRL Rwy 18-36	60	90	120	150	180
HIRL Rwy 4R-22L and 4L-22R	4:42	3:08	2:21	1:53	1:34
TDZ/CL Rwy 22R	FAF to MAP 4.7 NM				
Knots	60	90	120	150	180
Min:Sec	4:42	3:08	2:21	1:53	1:34

LITTLE ROCK, ARKANSAS

Amdt 26C 08SEP22

BILL AND HILLARY CLINTON NTL/ADAMS FLD (LIT)

34°44'N-92°13'W

ILS or LOC RWY 4L

SC-1, 10 JUL 2025 to 07 AUG 2025

SC-1, 10 JUL 2025 to 07 AUG 2025

LITTLE ROCK, ARKANSAS

AL-233 (FAA)

25219

LOC/DME I-LIT	APP CRS	Rwy Ldg	7976
110.3	047°	TDZE	258
Chan 40		Apt Elev	266

ILS or LOC RWY 4L

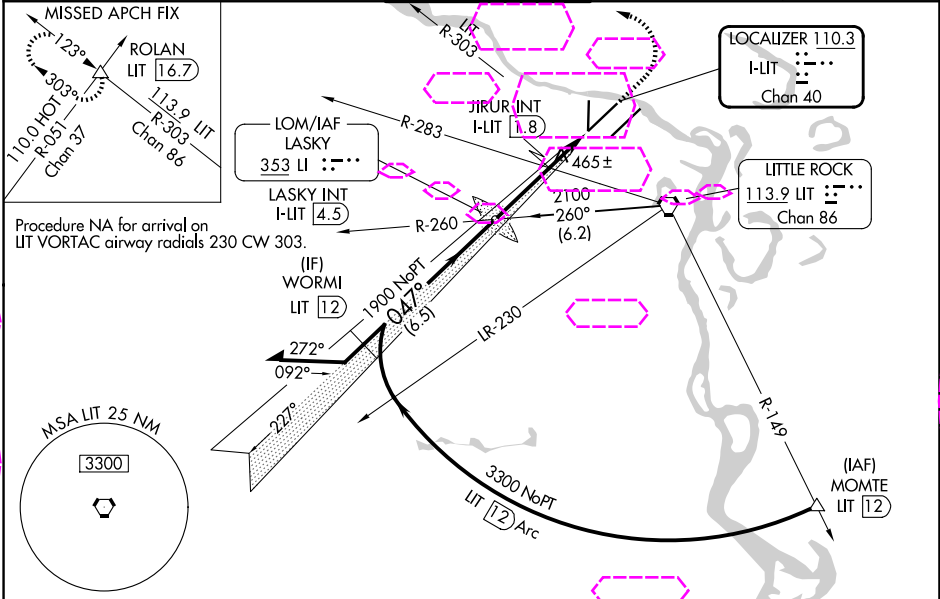
BILL AND HILLARY CLINTON NTL/ADAMS FLD (LIT)

Simultaneous approach authorized. Rwy 4L helicopter visibility reduction below RVR 4000 NA. Inop table does not apply to S-ILS 4L all Cats. LOC minimums: For inop ALS, increase S-LOC 4L Cats A/B visibility to 1 SM and Cats C/D visibility to 2 SM. JIRUR fix minimums: For inop ALS, increase S-LOC 4L Cats A/B visibility to 1 SM and Cats C/D visibility to 1 3/4 SM.

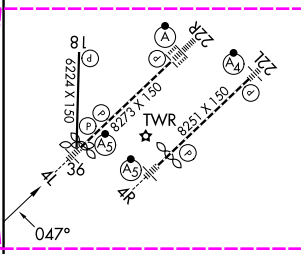
MALSR

MISSED APPROACH: Climb to 1500 then climbing left turn to 3500 on heading 260° and on LIT VORTAC R-303 to ROLAN INT/LIT 16.7 DME and hold.

D-ATIS	LITTLE ROCK APP CON	ADAMS TOWER	GND CON	CLNC DEL
125.65	135.4 353.6	118.7 257.8	121.9 339.8	118.95



ELEV 266	D	TDZE 258	LI LOM LASKY INT I-LIT 4.5	1500	3500	LIT R-303	ROLAN △
Remain within 10 NM				↑	hdg 260°		



MIRL Rwy 18-36					
HIRL Rwy 4R-22L and 4L-22R					
TDZ/CL Rwy 22R					
FAF to MAP 4.7 NM					
Knots	60	90	120	150	180
Min:Sec	4:42	3:08	2:21	1:53	1:34

CATEGORY	A	B	C	D
S-ILS 4L	508/40 250 (300-3/4)			
S-LOC 4L	960/40	702 (700-3/4)	960-15/8	702 (700-15/8)
CIRCLING	960-1 694 (700-1)	1000-1 734 (800-1)	1180-2 3/4 914 (1000-2 3/4)	1180-3 914 (1000-3)
JIRUR FIX MINIMUMS (DUAL VOR RECEIVERS OR DME REQUIRED)				
S-LOC 4L	720/40	462 (500-3/4)	720/50	462 (500-1)
CIRCLING	820-1 554 (600-1)	1000-1 734 (800-1)	1180-2 3/4 914 (1000-2 3/4)	1180-3 914 (1000-3)

LITTLE ROCK, ARKANSAS

Amdt 26C 08SEP22

BILL AND HILLARY CLINTON NTL/ADAMS FLD (LIT)

34°44'N-92°13'W

ILS or LOC RWY 4L

SC-1, 07 AUG 2025 to 04 SEP 2025

SC-1, 07 AUG 2025 to 04 SEP 2025