

LITTLE ROCK, ARKANSAS

AL-233 (FAA)

25163

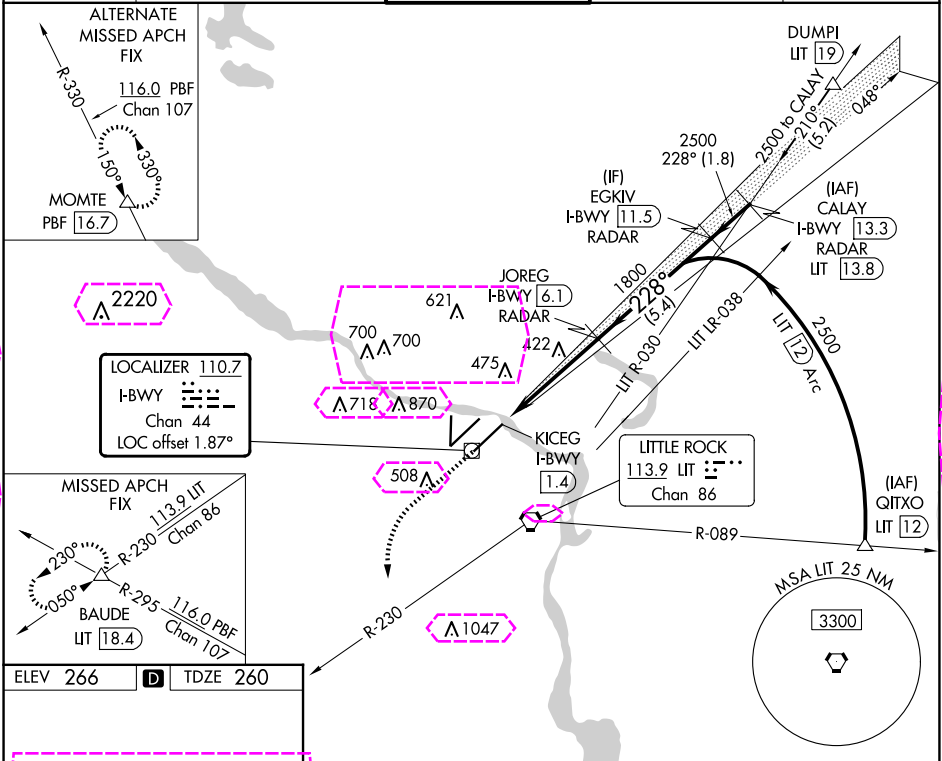
LOC/DME I-BWY	APP CRS	Rwy Ldg	7200
110.7	228°	TDZE	260
Chan 44		Apt Elev	266

ILS or LOC RWY 22L

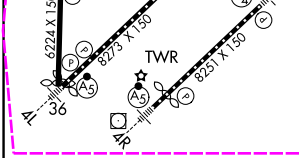
BILL AND HILLARY CLINTON NTL/ADAMS FLD (LIT)

DME or RADAR required.		MALSF	MISSED APPROACH: Climb to 800 then climbing left turn to 3000 on heading 170° and LIT VORTAC R-230 to BAUDE INT/LIT 18.4 DME and hold.
Simultaneous approach authorized.			

D-ATIS	LITTLE ROCK APP CON	ADAMS TOWER	GND CON	CLNC DEL
125.65	135.4 353.6	118.7 257.8	121.9 339.8	118.95



ELEV 266	D	TDZE 260
----------	---	----------



MIRL Rwy 18-36 HIRL Rwy 4R-22L and 4L-22R TDZ/CL Rwy 22R		*LOC only.		*I-BWY 2.4		KICEG I-BWY 1.4		JOREG I-BWY 6.1		EGKIV I-BWY 11.5		CALAY I-BWY 13.3	
FAF to MAP 4.6 NM		CATEGORY		A		B		C		D			
		S-ILS 22L		510/40		250 (300-3/4)							
		S-LOC 22L		640/40		380 (400-3/4)							
		Knots		60		90		120		150		180	
		Min:Sec		4:36		3:04		2:18		1:50		1:32	
		CIRCLING		820-1		1000-1		1180-2 3/4		1180-3			
				554 (600-1)		734 (800-1)		914 (1000-2 3/4)		914 (1000-3)			

LITTLE ROCK, ARKANSAS
Orig-F 16JUL20

34°44'N-92°13'W
ILS or LOC RWY 22L

LITTLE ROCK, ARKANSAS

AL-233 (FAA)

25219

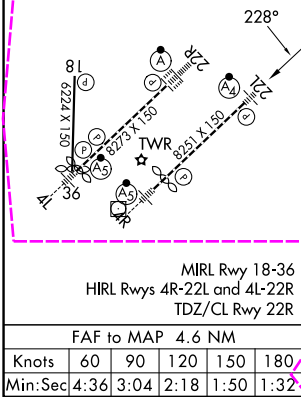
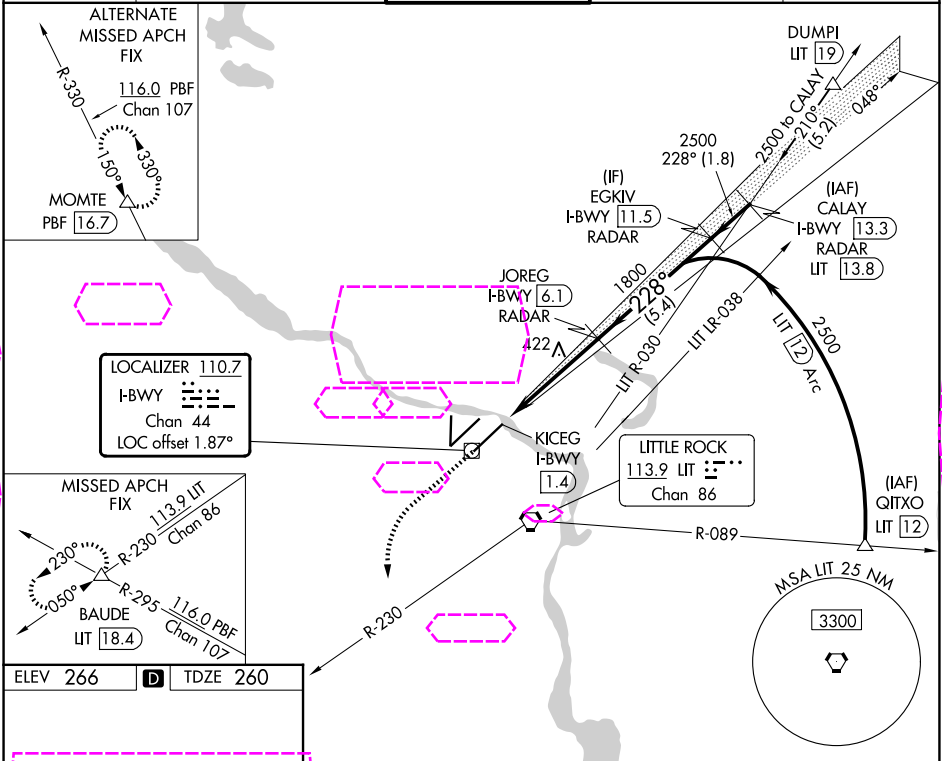
LOC/DME I-BWY	APP CRS	Rwy Ldg	7200
110.7	228°	TDZE	260
Chan 44		Apt Elev	266

ILS or LOC RWY 22L

BILL AND HILLARY CLINTON NTL/ADAMS FLD (LIT)

DME or RADAR required.		MALSF	MISSED APPROACH: Climb to 800 then climbing left turn to 3000 on heading 170° and LIT VORTAC R-230 to BAUDE INT/LIT 18.4 DME and hold.
Simultaneous approach authorized.			

D-ATIS	LITTLE ROCK APP CON	ADAMS TOWER	GND CON	CLNC DEL
125.65	135.4 353.6	118.7 257.8	121.9 339.8	118.95



CATEGORY	A	B	C	D
S-ILS 22L	510/40	250 (300-3/4)		
S-LOC 22L	640/40	380 (400-3/4)		
CIRCLING	820-1 554 (600-1)	1000-1 734 (800-1)	1180-2 3/4 914 (1000-2 3/4)	1180-3 914 (1000-3)

LITTLE ROCK, ARKANSAS
Orig-F 16JUL20

BILL AND HILLARY CLINTON NTL/ADAMS FLD (LIT)
34°44'N-92°13'W
ILS or LOC RWY 22L

SC-1, 07 AUG 2025 to 04 SEP 2025

SC-1, 07 AUG 2025 to 04 SEP 2025