

LITTLE ROCK, ARKANSAS

AL-233 (FAA)

25163

LOC/DME I-AAY 110.3 Chan 40	APP CRS 227°	Rwy Ldg 8273 TDZE 262 Apt Elev 266
--	------------------------	---

ILS RWY 22R (SA CAT I)
BILL AND HILLARY CLINTON NTL/ADAMS FLD (LIT)

DME required.

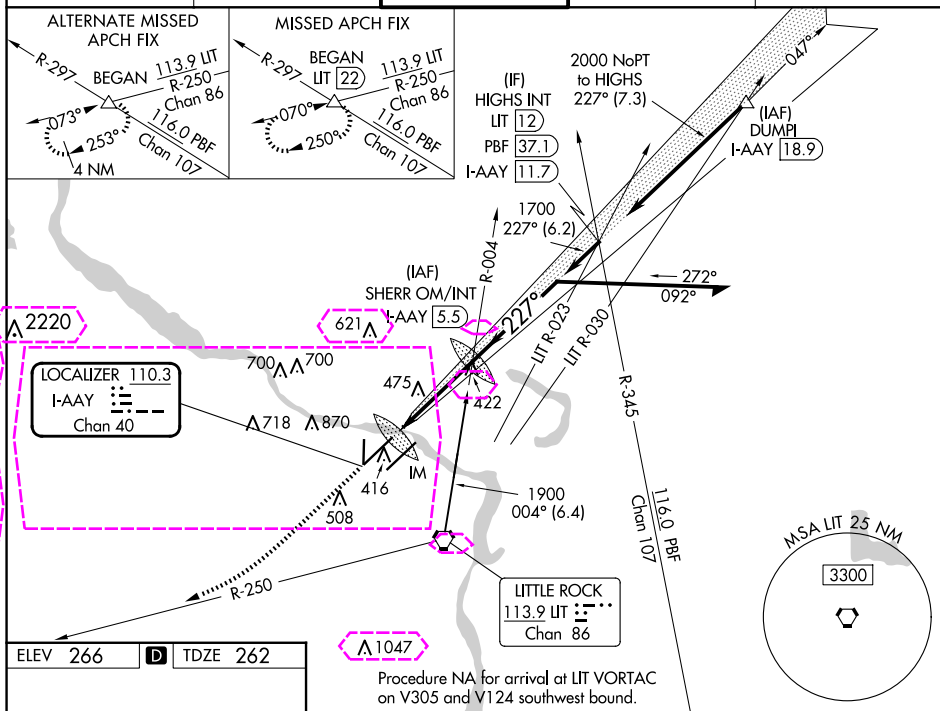
T	Simultaneous approach authorized with Rwy 22L.
A	Requires specific OPSPEC, MSPEC, or LOA approval and use of HUD to DA.

ALSF-2



MISSED APPROACH: Climb to 1000 then climbing right turn to 2300 on LIT VORTAC R-250 to BEGAN INT/LIT 22 DME and hold.

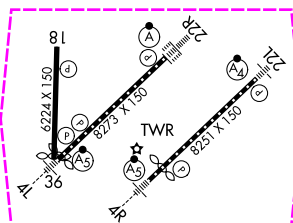
D-ATIS 125.65	LITTLE ROCK APP CON 135.4 353.6	ADAMS TOWER 118.7 257.8	GND CON 121.9 339.8	CLNC DEL 118.95
-------------------------	---	-----------------------------------	-------------------------------	---------------------------



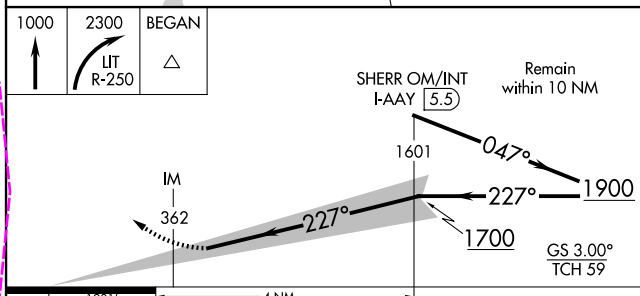
ELEV 266	D	TDZE 262
----------	----------	----------

Λ 1047

Procedure NA for arrival at LIT VORTAC
on V305 and V124 southwest bound.



MIRL Rwy 18-36
HIRL Rwy 4R-22L and 4L-22R
TDZ/CL Rwy 22R



CATEGORY	A	B	C	D
S-ILS-22R	RA 182/14 150 DA 412			

SA CATEGORY I ILS - SPECIAL AIRCREW
& AIRCRAFT CERTIFICATION REQUIRED

LITTLE ROCK, ARKANSAS
Amdt 3B 15JUN23

BILL AND HILLARY CLINTON NTL/ADAMS FLD (LIT)
34°44'N-92°13'W ILS RWY 22R (SA CAT I)

LITTLE ROCK, ARKANSAS

AL-233 (FAA)

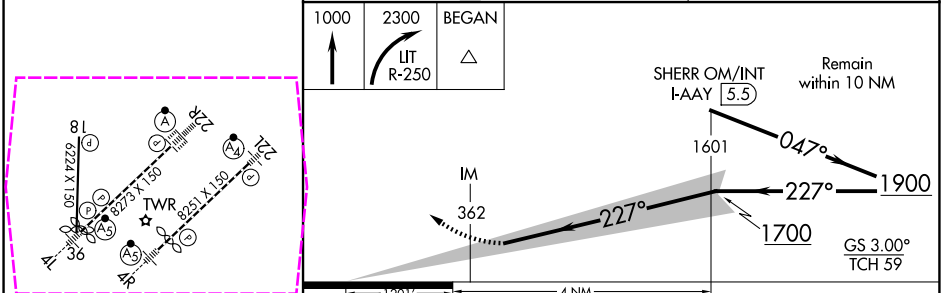
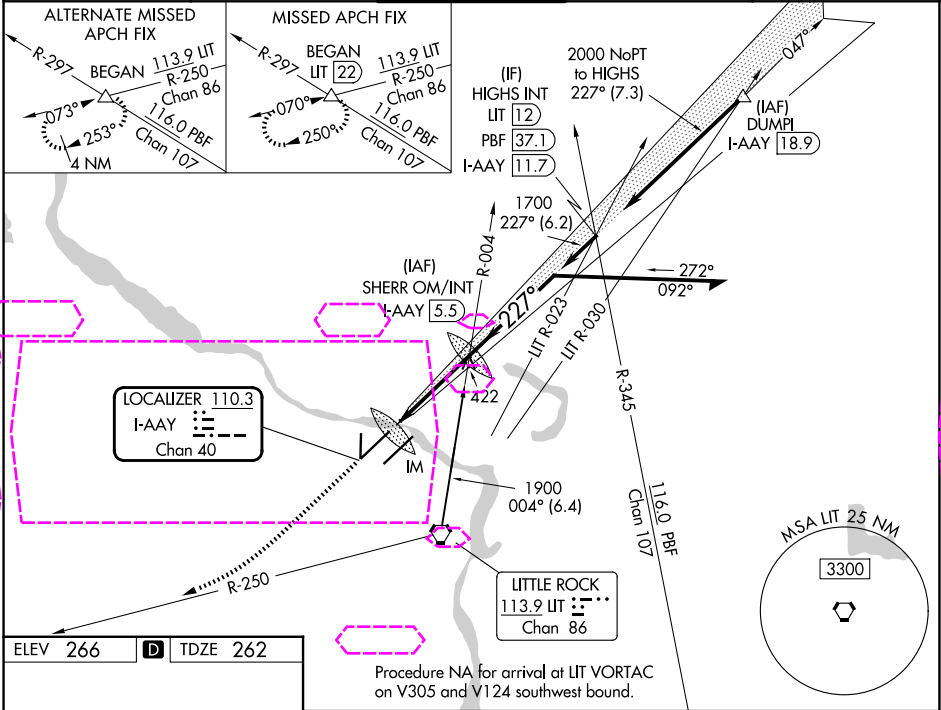
25219

LOC/DME I-AAY	APP CRS	Rwy Ldg	8273
110.3	227°	TDZE	262
Chan 40		Apt Elev	266

ILS RWY 22R (SA CAT I)
BILL AND HILLARY CLINTON NTL/ADAMS FLD (LIT)

DME required.	Simultaneous approach authorized with Rwy 22L. Requires specific OPSPEC, MSPEC, or LOA approval and use of HUD to DA.	ALSF-2	MISSED APPROACH: Climb to 1000 then climbing right turn to 2300 on UT VORTAC R-250 to BEGAN INT/LIT 22 DME and hold.
---------------	---	--------	--

D-ATIS	LITTLE ROCK APP CON	ADAMS TOWER	GND CON	CLNC DEL
125.65	135.4 353.6	118.7 257.8	121.9 339.8	118.95



CATEGORY	A	B	C	D
S-ILS-22R	RA 182/14 150 DA 412			

SA CATEGORY I ILS - SPECIAL AIRCREW
& AIRCRAFT CERTIFICATION REQUIRED

LITTLE ROCK, ARKANSAS
Amdt 3B 15JUN23

BILL AND HILLARY CLINTON NTL/ADAMS FLD (LIT)
34°44'N-92°13'W
ILS RWY 22R (SA CAT I)

SC-1, 07 AUG 2025 to 04 SEP 2025

SC-1, 07 AUG 2025 to 04 SEP 2025