

LITTLE ROCK, ARKANSAS

AL-233 (FAA)

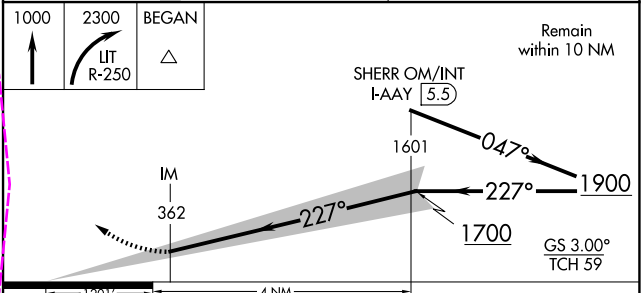
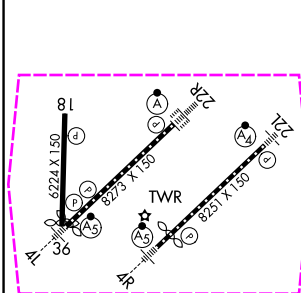
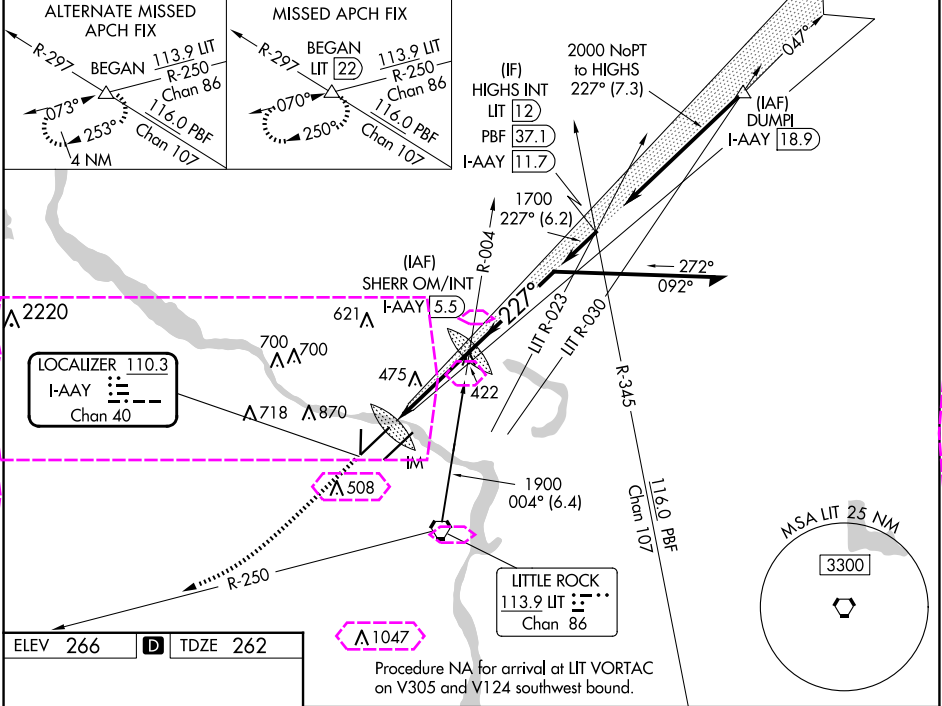
25163

LOC/DME I-AAY 110.3 Chan 40	APP CRS 227°	Rwy Ldg TDZE Apt Elev	8273 262 266
---	------------------------	-----------------------------	---

ILS RWY 22R (CAT II & III)
BILL AND HILLARY CLINTON NTL/ADAMS FLD (LIT)

DME required.	ALSIF-2	MISSED APPROACH: Climb to 1000 then climbing right turn to 2300 on IUT VORTAC R-250 to BEGAN INT/LIT 22 DME and hold.
Simultaneous approach authorized with Rwy 22L.		

D-ATIS 125.65	LITTLE ROCK APP CON 135.4 353.6	ADAMS TOWER 118.7 257.8	GND CON 121.9 339.8	CLNC DEL 118.95
-------------------------	---	-----------------------------------	-------------------------------	---------------------------



CATEGORY	A	B	C	D
S-ILS-22R	CAT II RA 128/12 100 DA 362			
S-ILS-22R	CAT III RVR 06			

CATEGORY II & III ILS - SPECIAL AIRCREW & AIRCRAFT CERTIFICATION REQUIRED

LITTLE ROCK, ARKANSAS
Amdt 3B 15JUN23

BILL AND HILLARY CLINTON NTL/ADAMS FLD (LIT)
34°44'N-92°13'W
ILS RWY 22R (CAT II & III)

SC-1, 10 JUL 2025 to 07 AUG 2025

SC-1, 10 JUL 2025 to 07 AUG 2025

LITTLE ROCK, ARKANSAS

AL-233 (FAA)

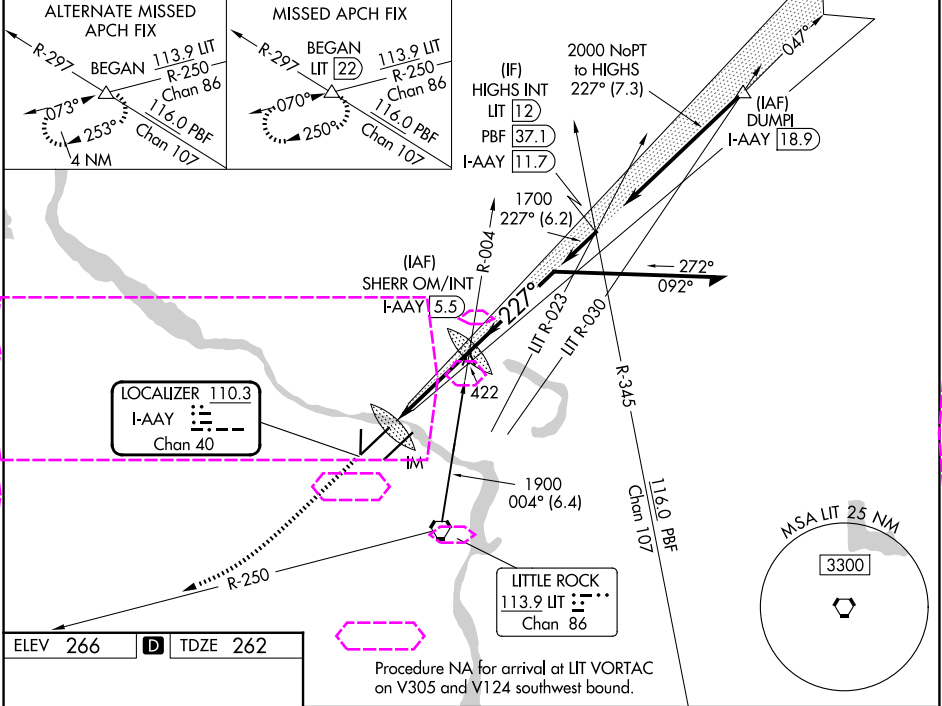
25219

LOC/DME I-AAY 110.3 Chan 40	APP CRS 227°	Rwy Ldg TDZE 262 Apt Elev 266
---	------------------------	---

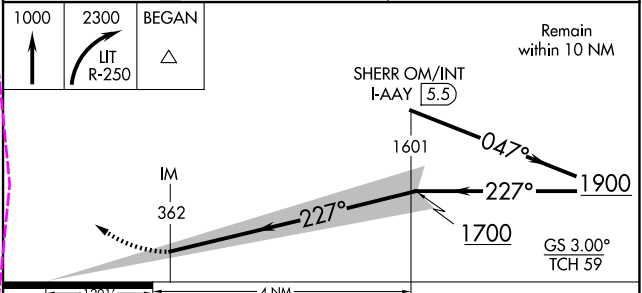
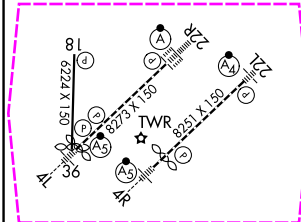
ILS RWY 22R (CAT II & III)
BILL AND HILLARY CLINTON NTL/ADAMS FLD (LIT)

DME required.		ALSIF-2	MISSED APPROACH: Climb to 1000 then climbing right turn to 2300 on UT VORTAC R-250 to BEGAN INT/LIT 22 DME and hold.
Simultaneous approach authorized with Rwy 22L.			

D-ATIS 125.65	LITTLE ROCK APP CON 135.4 353.6	ADAMS TOWER 118.7 257.8	GND CON 121.9 339.8	CLNC DEL 118.95
-------------------------	---	-----------------------------------	-------------------------------	---------------------------



ELEV 266	TDZE 262
----------	----------



CATEGORY	A	B	C	D
S-ILS-22R	CAT II RA 128/12 100 DA 362			
S-ILS-22R	CAT III RVR 06			

CATEGORY II & III ILS - SPECIAL AIRCREW & AIRCRAFT CERTIFICATION REQUIRED

LITTLE ROCK, ARKANSAS
Amdt 3B 15JUN23

BILL AND HILLARY CLINTON NTL/ADAMS FLD (LIT)
34°44'N-92°13'W
ILS RWY 22R (CAT II & III)

SC-1, 07 AUG 2025 to 04 SEP 2025

SC-1, 07 AUG 2025 to 04 SEP 2025