

LINCOLN, NEBRASKA

AL-232 (FAA)

25107

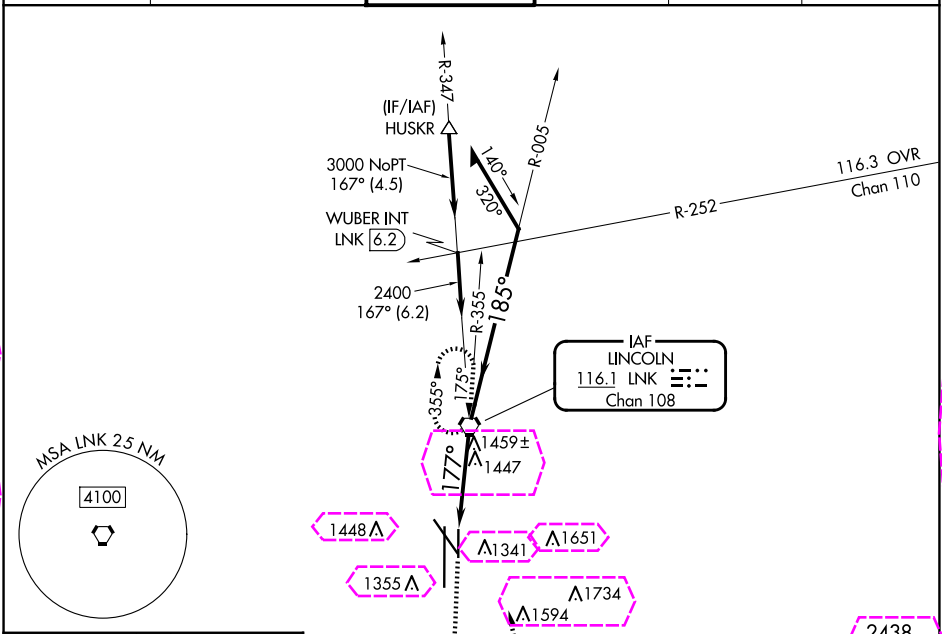
VORTAC LNK 116.1 Chan 108	APP CRS 177°	Rwy Idg TDZE 1219 Apt Elev 1219
---	------------------------	---

VOR RWY 17
LINCOLN (LNK)

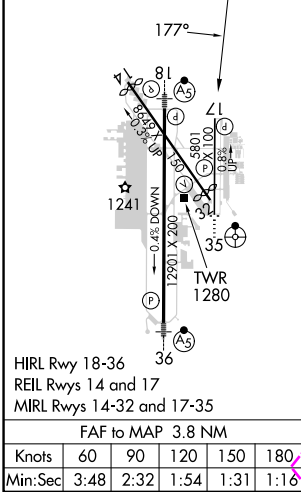
⚠ When local altimeter setting not received, use Beatrice altimeter setting and increase all MDA 100 feet; increase S-17 Cat C/D visibility $\frac{3}{8}$ SM and Circling Cat C/D visibility $\frac{1}{4}$ SM. VDP NA when using Beatrice altimeter setting.

MISSED APPROACH: Climb to 2800 then climbing left turn to 3100 direct LNK VORTAC and hold

ATIS 118.05 290.9	OMAHA APP CON 124.0 270.3	LINCOLN TOWER* 118.5 (CTAF) 253.5	GND CON 121.9 275.8	CLNC DEL 120.7 225.4	UNICOM 122.95
-----------------------------	-------------------------------------	---	-------------------------------	--------------------------------	-------------------------



ELEV 1219	D	TDZE 1219
-----------	----------	-----------



<div>Λ 2037</div>				
2800 ↑	3100 ↙	LNK 	LNK VORTAC VGSI and descent angles not coincident (VGSI Angle 3.00/TCH 44). Remain within 10 NM	
		LNK 2.3 ↓		
1.4 NM		2.3 NM		2400
CATEGORY	A	B	C	D
S-17	1720-1	501 (600-1)	1720-1 $\frac{3}{8}$	501 (600-1 $\frac{3}{8}$)
CIRCLING	1720-1 501 (600-1)	1760-1 541 (600-1)	1820-1 $\frac{3}{4}$ 601 (700-1 $\frac{3}{4}$)	1960-2 $\frac{1}{2}$ 741 (800-2 $\frac{1}{2}$)

LINCOLN, NEBRASKA

Amdt 7B 24MAR22

40°51'N-96°46'W

LINCOLN (LNK)
VOR RWY 17

NC-2, 10 JUL 2025 to 07 AUG 2025

NC-2, 10 JUL 2025 to 07 AUG 2025

LINCOLN, NEBRASKA

AL-232 (FAA)

25219

VORTAC LNK 116.1 Chan 108	APP CRS 177°	Rwy Ldg TDZE 1219 Apt Elev 1219
---	------------------------	---

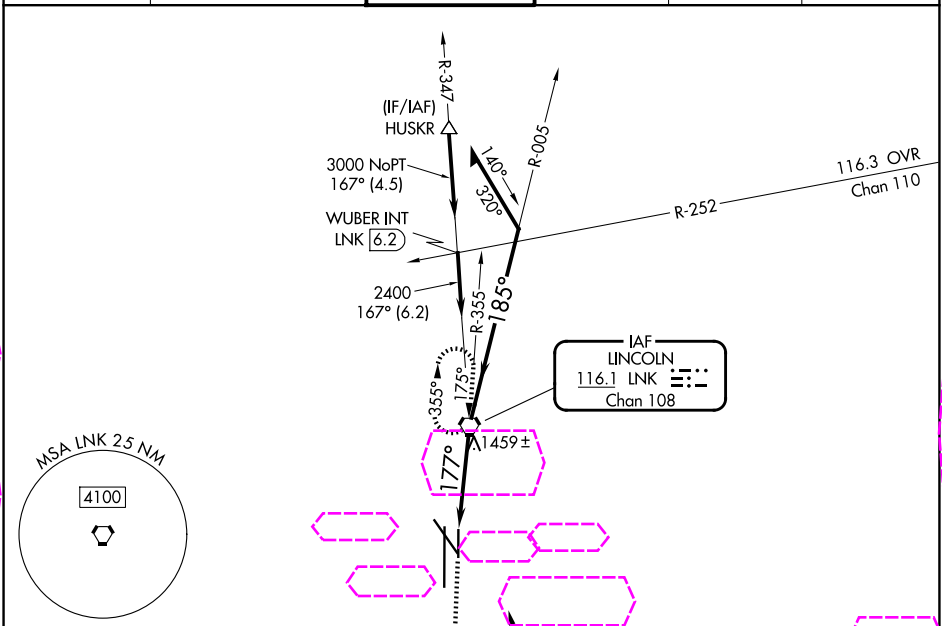
VOR RWY 17

LINCOLN (LNK)

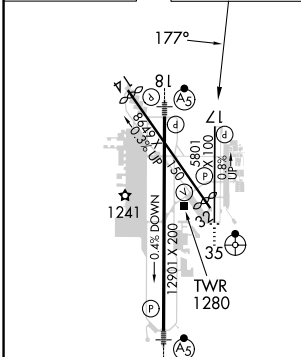
⚠ When local altimeter setting not received, use Beatrice altimeter setting and increase all MDA 100 feet; increase S-17 Cat C/D visibility $\frac{3}{8}$ SM and Circling Cat C/D visibility $\frac{1}{4}$ SM. VDP NA when using Beatrice altimeter setting.

MISSED APPROACH: Climb to 2800 then climbing left turn to 3100 direct LNK VORTAC and hold

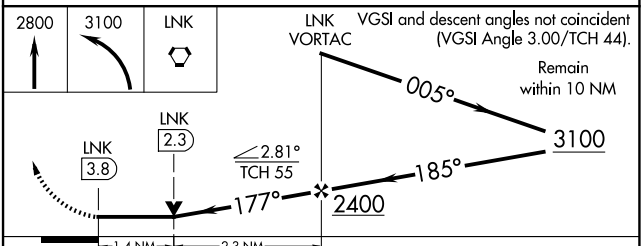
ATIS 118.05 290.9	OMAHA APP CON 124.0 270.3	LINCOLN TOWER* 118.5 (CTAF) 253.5	GND CON 121.9 275.8	CLNC DEL 120.7 225.4	UNICOM 122.95
-----------------------------	-------------------------------------	---	-------------------------------	--------------------------------	-------------------------



ELEV 1219	D	TDZE 1219
-----------	----------	-----------



FAF to MAP 3.8 NM					
Knots	60	90	120	150	180
Min:Sec	3:48	2:32	1:54	1:31	1:16



CATEGORY	A	B	C	D
S-17	1720-1 501 (600-1)	1720-1 501 (600-1)	1720-1 501 (600-1)	1720-1 501 (600-1)
CIRCLING	1720-1 501 (600-1)	1760-1 541 (600-1)	1820-1 601 (700-1)	1960-2 741 (800-2)

LINCOLN, NEBRASKA

Amdt 7B 24MAR22

40°51'N-96°46'W

LINCOLN (LNK) VOR RWY 17

NC-2, 07 AUG 2025 to 04 SEP 2025

NC-2, 07 AUG 2025 to 04 SEP 2025