

LINCOLN, NEBRASKA

AL-232 (FAA)

25107

WAAS CH 56214 W36A	APP CRS 357°	Rwy Idg 12901 TDZE 1175 Apt Elev 1219
--	------------------------	--

RNAV (GPS) RWY 36

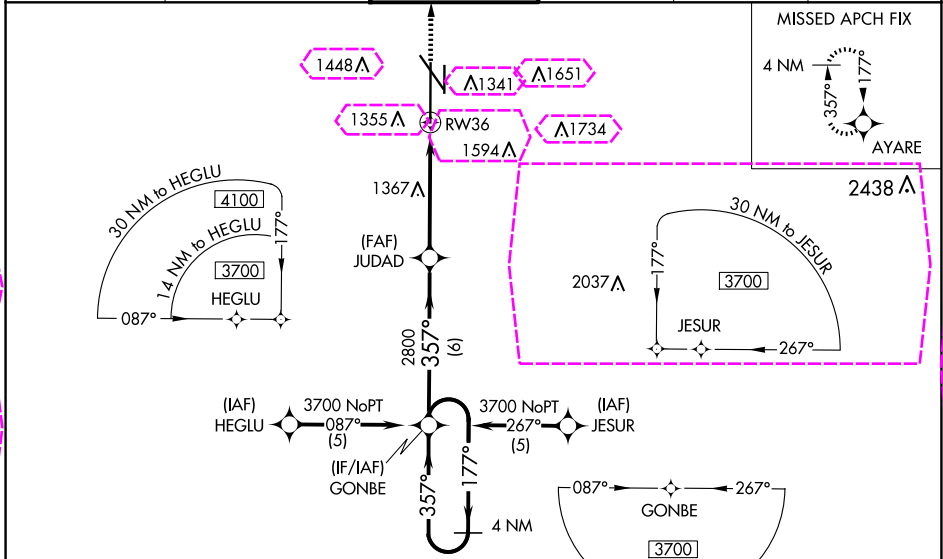
LINCOLN (LNK)

⚠ For uncompensated Baro-VNAV systems, LNAV/VNAV NA below -17°C (2°F) or above 54°C (130°F). DME/DME RNP-0.3 NA. When local altimeter setting not received, use Beatec altimeter setting and increase all DA 91 feet, all MDA 100 feet and LNAV/VNAV all Cats, LNAV Cat C and D, and Circling Cats C and D visibility ¼ mile and LPV all Cats visibility ½ mile. For inop MALSR increase LPV all Cats visibility to 1 mile. For inop MALSR when using Beatec altimeter setting increase LPV all Cats visibility to 1½ mile. Baro-VNAV and VDP NA when using Beatec altimeter setting.



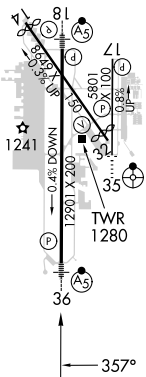
MISSED APPROACH:
Climb to 3800 direct
AYARE and hold.

ATIS 118.05 290.9	OMAHA APP CON 124.0 270.3	LINCOLN TOWER ★ 118.5 (CTAF) 253.5	GND CON 121.9 275.8	CLNC DEL 120.7 225.4	UNICOM 122.95
-----------------------------	-------------------------------------	--	-------------------------------	--------------------------------	-------------------------



ELEV 1219	D	TDZE 1175
-----------	---	-----------

MIRL Rwy 14-32 and 17-35
REIL Rwy 14 and 17
HIRL Rwy 18-36



4 NM Holding Pattern GONBE		3800 AYARE	
3700 ← 177°		357°	
GP 3.00°		2800	
TCH 56		*1.2 NM to RW36	
6 NM		3.7 NM	
1.2 NM		RW36	
CATEGORY	A	B	C
LPV DA	1493/24 318 (300-½)		
LNAV/VNAV DA	1669/60 494 (500-1¼)		
LNAV MDA	1620/24	445 (500-½)	1620/40 445 (500-¾)
CIRCLING	1720-1 501 (600-1)	1760-1 541 (600-1)	1820-1¾ 601 (700-1¾)

LINCOLN, NEBRASKA

Amdt 1D 12AUG21

40°51'N-96°46'W

RNAV (GPS) RWY 36

LINCOLN (LNK)

LINCOLN, NEBRASKA

AL-232 (FAA)

25219

WAAS CH 56214 W36A	APP CRS 357°	Rwy Ldg 12901 TDZE 1175 Apt Elev 1219
--	------------------------	--

RNAV (GPS) RWY 36

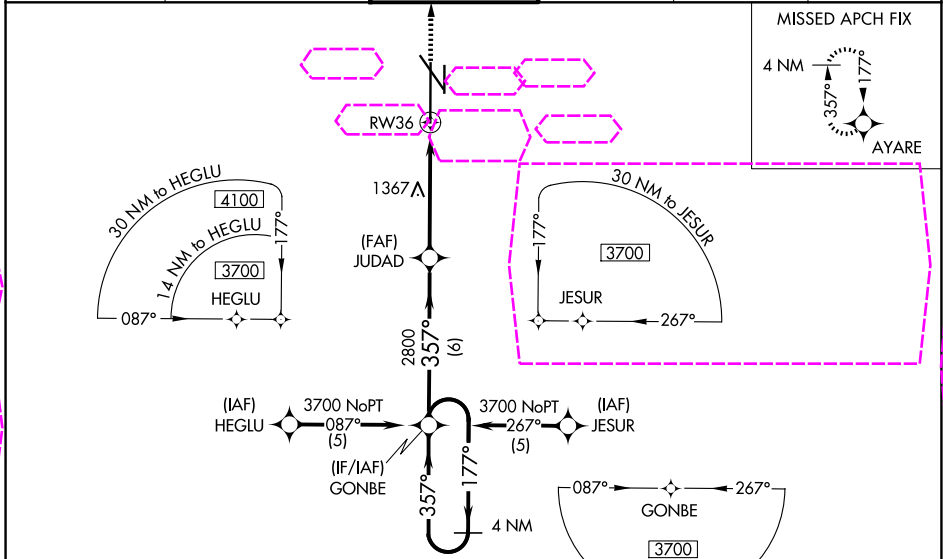
LINCOLN (LNK)

⚠ For uncompensated Baro-VNAV systems, LNAV/VNAV NA below -17°C (2°F) or above 54°C (130°F). DME/DME RNP-0.3 NA. When local altimeter setting not received, use Beatec altimeter setting and increase all DA 91 feet, all MDA 100 feet and LNAV/VNAV all Cats, LNAV Cat C and D, and Circling Cats C and D visibility ¼ mile and LPV all Cats visibility ½ mile. For inop MALSR increase LPV all Cats visibility to 1 mile. For inop MALSR when using Beatec altimeter setting increase LPV all Cats visibility to 1 ½ mile. Baro-VNAV and VDP NA when using Beatec altimeter setting.



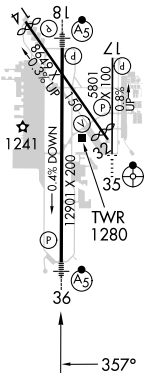
MISSED APPROACH:
Climb to 3800 direct
AYARE and hold.

ATIS 118.05 290.9	OMAHA APP CON 124.0 270.3	LINCOLN TOWER ★ 118.5 (CTAF) 253.5	GND CON 121.9 275.8	CLNC DEL 120.7 225.4	UNICOM 122.95
-----------------------------	-------------------------------------	--	-------------------------------	--------------------------------	-------------------------



ELEV 1219	D	TDZE 1175
-----------	----------	-----------

MIRL Rwy 14-32 and 17-35
REIL Rwy 14 and 17
HIRL Rwy 18-36



4 NM Holding Pattern GONBE				3800	AYARE
3700 ← 177° → 357°				2800	JUDAD
GP 3.00° TCH 56				*1.2 NM to RW36	*LNAV only
6 NM				3.7 NM	1.2 NM
CATEGORY	A	B	C	D	
LPV DA	1493/24 318 (300-½)				
LNAV/VNAV DA	1669/60 494 (500-1¼)				
LNAV MDA	1620/24	445 (500-½)	1620/40 445 (500-¾)	1620/50 445 (500-1)	
CIRCLING	1720-1 501 (600-1)	1760-1 541 (600-1)	1820-1¾ 601 (700-1¾)	1960-2½ 741 (800-2½)	

LINCOLN, NEBRASKA

Amdt 1D 12AUG21

40°51'N-96°46'W

LINCOLN (LNK)

RNAV (GPS) RWY 36

NC-2, 07 AUG 2025 to 04 SEP 2025

NC-2, 07 AUG 2025 to 04 SEP 2025