


WAAS CH <b>45637</b> <b>W35A</b>	APP CRS <b>357°</b>	Rwy Idg TDZE Apt Elev	<b>5800</b> <b>1196</b> <b>1219</b>
--	------------------------	-----------------------------	---

RNAV (GPS) RWY 35

LINCOLN (LNK)

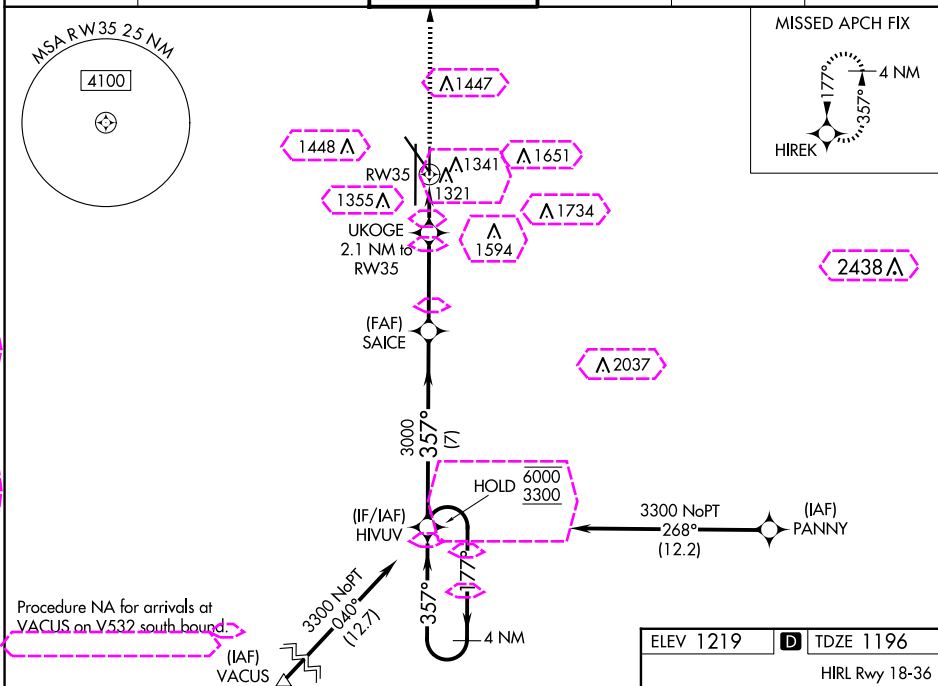
	RNP APCH - GPS.
--	-----------------

 For uncompensated Baro-VNAV systems, LNAV/VNAV NA below -25°C or above 54°C.

ODALS

**MISSED APPROACH:** Climb to 3800 direct HIREK and hold.

ATIS	OMAHA APP CON	LINCOLN TOWER *	GND CON	CLNC DEL	UNICOM
118.05 290.9	124.0 270.3	118.5 (CTAF) 253.5	121.9 275.8	120.7 225.4	122.95



### Procedure NA for arrivals at VACUS on V532 south bound:

VGSI and RNAV glidepath not coincident (VGSI Angle 3.00°/TCH 30).

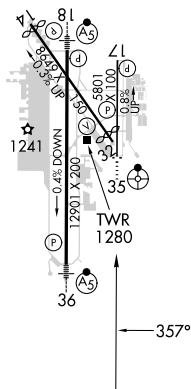
CATEGORY	A	B	C	D
LPV DA	1446- $\frac{3}{4}$ 250 (300- $\frac{3}{4}$ )			
LNAP/ VNAP DA	1534-1 338 (400-1)			
LNAP MDA	1580- $\frac{3}{4}$ 384 (400- $\frac{3}{4}$ )	1580-1 384 (400-1)		
<b>C</b> CIRCLING	1680-1 461 (500-1)	1760-1 541 (600-1)	1820-1 $\frac{3}{4}$ 601 (700-1 $\frac{3}{4}$ )	1960-2 $\frac{1}{2}$ 741 (800-2 $\frac{1}{2}$ )

LINCOLN, NEBRASKA

Orig-B 28DEC23

40°51'N-96°46'W

9	<b>D</b>	TDZE 1196
HIRL Rwy 18-36		
REIL Rwys 14 and 17		
MIRL Rwys 14-32 and 17-35		



RNAV (GPS) RWY 35

LINK

NC-2, 10 JUL 2025 to 07 AUG 2025

NC-2, 10 JUL 2025 to 07 AUG 2025

LINCOLN, NEBRASKA

AL-232 (FAA)

25219

WAAS CH <b>45637</b> <b>W35A</b>	APP CRS <b>357°</b>	Rwy Ldg TDZE <b>1196</b> Apt Elev <b>1219</b>
--	------------------------	---

# RNAV (GPS) RWY 35

LINCOLN (LNK)

RNP APCH - GPS.

▼

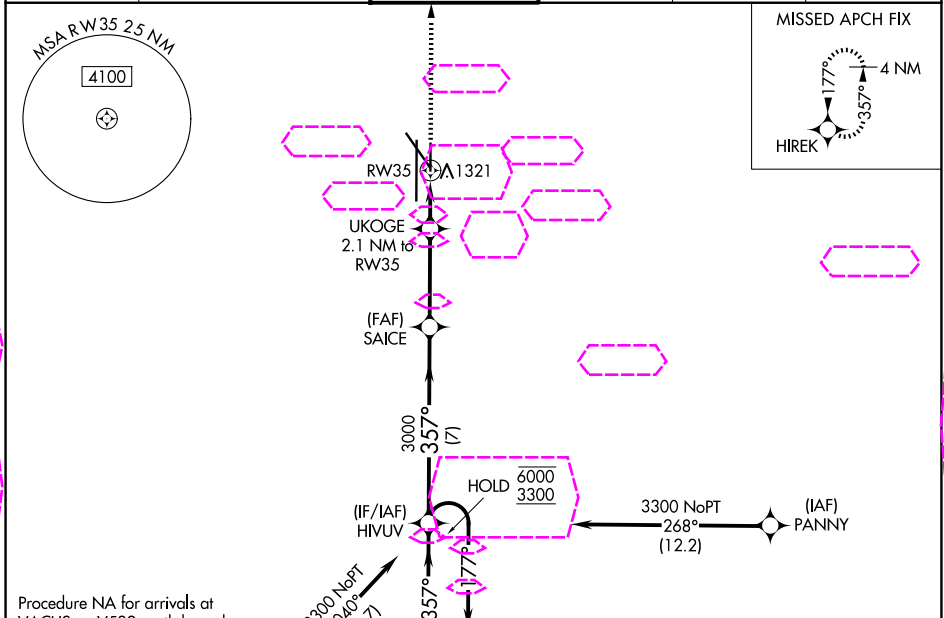
▲

For uncompensated Baro-VNAV systems, LNAV/VNAV NA below -25°C or above 54°C.

ODALS

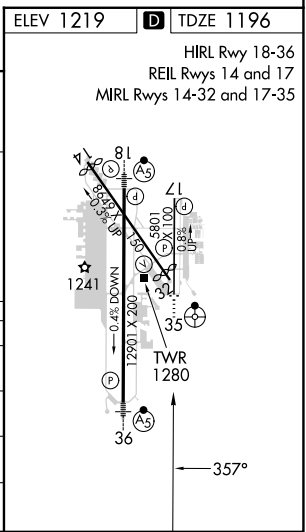
MISSED APPROACH: Climb to 3800 direct HIREK and hold.

ATIS <b>118.05 290.9</b>	OMAHA APP CON <b>124.0 270.3</b>	LINCOLN TOWER★ <b>118.5(CTAF) 253.5</b>	GND CON <b>121.9 275.8</b>	CLNC DEL <b>120.7 225.4</b>	UNICOM <b>122.95</b>
-----------------------------	-------------------------------------	--	-------------------------------	--------------------------------	-------------------------



Procedure NA for arrivals at VACUS on V532 south bound and T286 north westbound.

4 NM Holding Pattern		HIVUV		VGSi and RNAV glidepath not coincident (VGSi Angle 3.00/TCH 30).		3800 HIREK	
6000 ← 177°		3300 → 357°		3000		1880	
GP 3.00° TCH 45		7 NM		3.5 NM		0.9 NM	
CATEGORY	A	B	C	D			
LPV DA	1446-¾			250 (300-¾)			
LNAV/VNAV DA	1534-1			338 (400-1)			
LNAV MDA	1580-¾	384 (400-¾)	1580-1		384 (400-1)		
CIRCLING	1680-1 461 (500-1)	1760-1 541 (600-1)	1820-1¾ 601 (700-1¾)	1960-2½ 741 (800-2½)			



LINCOLN, NEBRASKA

Orig-C 07AUG25

40°51'N-96°46'W

# RNAV (GPS) RWY 35

LINCOLN (LNK)

NC-2, 07 AUG 2025 to 04 SEP 2025

NC-2, 07 AUG 2025 to 04 SEP 2025