

LINCOLN, NEBRASKA

AL-232 (FAA)

25107

WAAS CH 69328 W32A	APP CRS 322°	Rwy Idg TDZE 1192 Apt Elev 1219
--	------------------------	---

RNAV (GPS) RWY 32

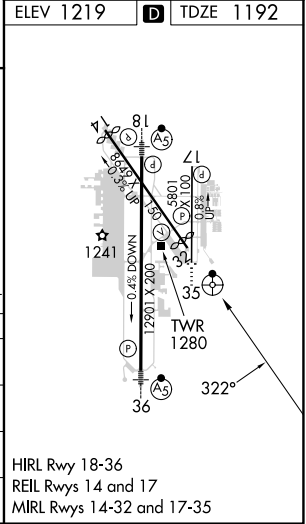
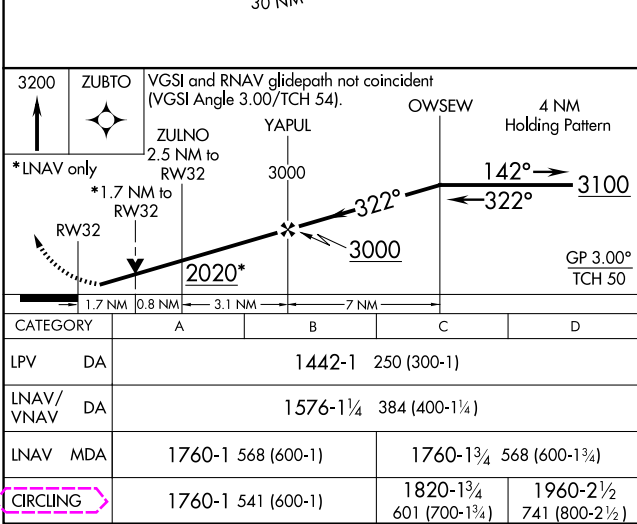
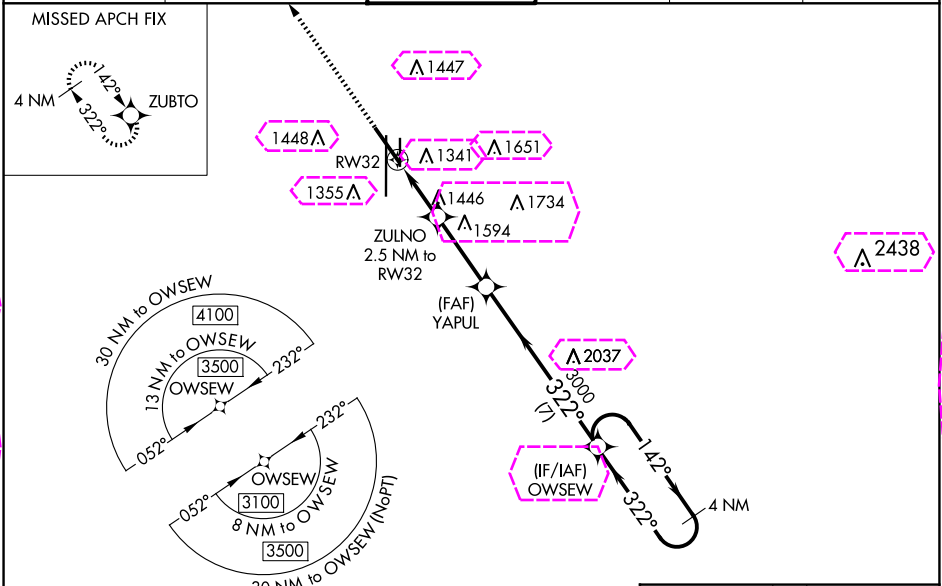
LINCOLN (LNK)

RNP APCH - GPS.

For uncompensated Baro-VNAV systems, LNAV/VNAV NA below -25°C (-13°F) or above 54°C (130°F). When local altimeter setting not received, use Beatrice altimeter setting and increase all DA 91 feet and all MDA 100 feet, increase LPV all Cats visibility $\frac{1}{8}$ mile, increase LNAV/VNAV all Cats visibility $\frac{3}{8}$ mile, increase LNAV Cats C/D and Circling Cats C/D visibility $\frac{1}{4}$ mile. Helicopter visibility reduction below $\frac{3}{4}$ SM NA. Baro-VNAV and VDP NA when using Beatrice altimeter setting.

MISSED APPROACH:
Climb to 3200 direct ZUBTO and hold.

ATIS 118.05 290.9	OMAHA APP CON 124.0 270.3	LINCOLN TOWER* 118.5(CTAF) 253.5	GND CON 121.9 275.8	CLNC DEL 120.7 225.4	UNICOM 122.95
-----------------------------	-------------------------------------	--	-------------------------------	--------------------------------	-------------------------



NC-2, 10 JUL 2025 to 07 AUG 2025

NC-2, 10 JUL 2025 to 07 AUG 2025

LINCOLN, NEBRASKA

AL-232 (FAA)

25219

WAAS CH 69328 W32A	APP CRS 322°	Rwy Ldg TDZE 1192 Apt Elev 1219
--	------------------------	---

RNAV (GPS) RWY 32

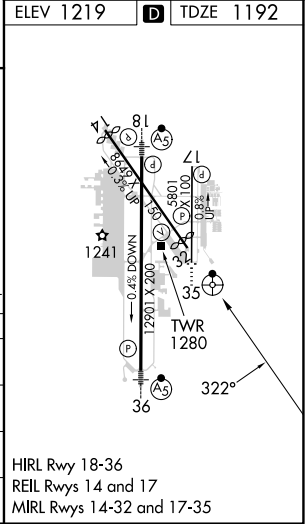
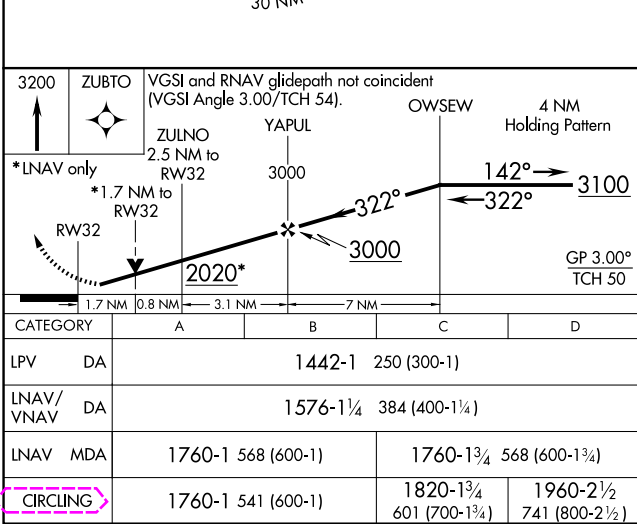
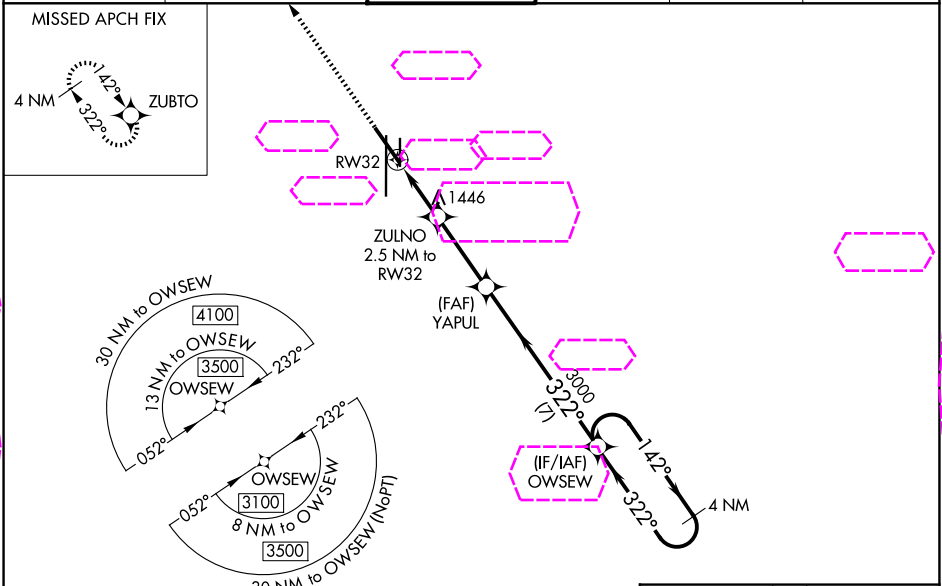
LINCOLN (LNK)

RNP APCH - GPS.

⚠ For uncompensated Baro-VNAV systems, LNAV/VNAV NA below -25°C (-13°F) or above 54°C (130°F). When local altimeter setting not received, use Beatrice altimeter setting and increase all DA 91 feet and all MDA 100 feet, increase LPV all Cats visibility ½ mile, increase LNAV/VNAV all Cats visibility ¾ mile, increase LNAV Cats C/D and Circling Cats C/D visibility ½ mile. Helicopter visibility reduction below ¾ SM NA. Baro-VNAV and VDP NA when using Beatrice altimeter setting.

MISSED APPROACH:
Climb to 3200 direct ZUBTO and hold.

ATIS 118.05 290.9	OMAHA APP CON 124.0 270.3	LINCOLN TOWER* 118.5(CTAF) 253.5	GND CON 121.9 275.8	CLNC DEL 120.7 225.4	UNICOM 122.95
-----------------------------	-------------------------------------	--	-------------------------------	--------------------------------	-------------------------



LINCOLN, NEBRASKA
Orig-C 23FEB23

40°51'N-96°46'W

RNAV (GPS) RWY 32

LINCOLN (LNK)

NC-2, 07 AUG 2025 to 04 SEP 2025

NC-2, 07 AUG 2025 to 04 SEP 2025