

LINCOLN, NEBRASKA

AL-232 (FAA)


25107

WAAS CH 50114 W18A	APP CRS 177°	Rwy Idg 12901 TDZE 1195 Apt Elev 1219
----------------------------------------	------------------------	------------------------------------------------------------------

RNAV (GPS) RWY 18

LINCOLN (LNK)

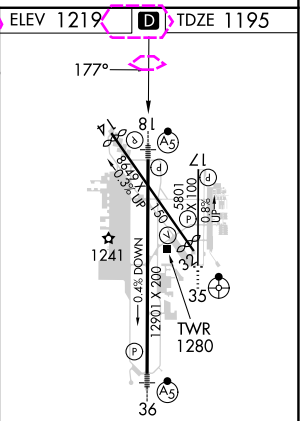
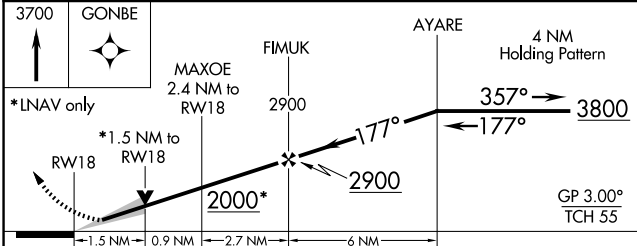
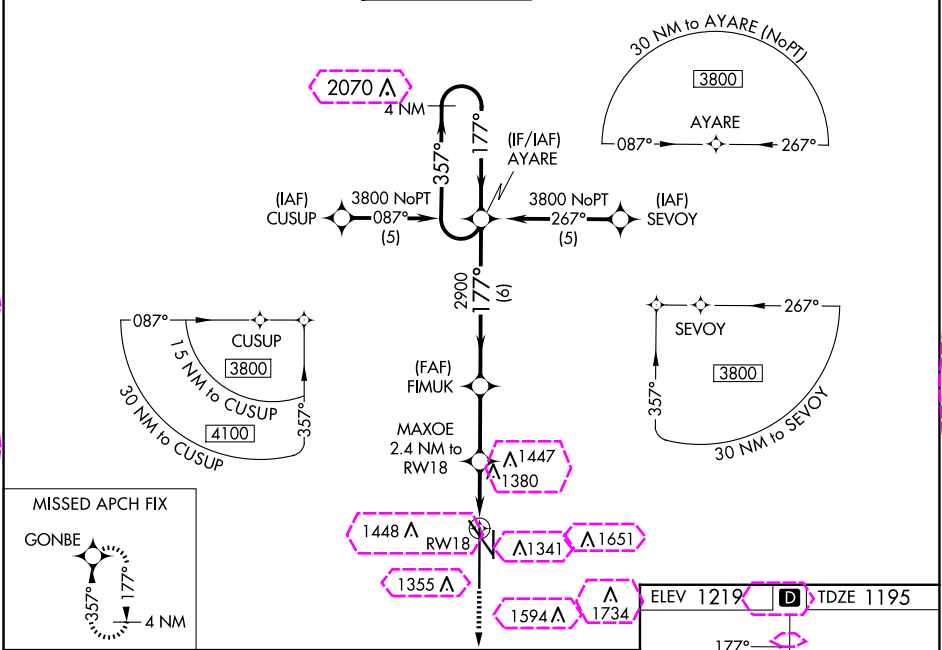
⚠ For uncompensated Baro-VNAV systems, LNAV/VNAV NA below -17°C (2°F) or above 54°C (130°F). DME/DME RNP-0.3 NA. When local altimeter setting not received, use Beairice altimeter setting and increase all DA 91 feet, all MDA 100 feet, increase LPV all Cats, LNAV Cats C and D, and Circling Cats C and D visibilities ¼ mile, and increase LNAV/VNAV all Cats visibility ½ mile. For inop MALS, when using Beairice altimeter setting increase LPV all Cats visibility to 1¼ mile. Baro-VNAV and VDP NA when using Beairice altimeter setting.



MALS

MISSED APPROACH:
Climb to 3700 direct GONBE and hold.

ATIS 118.05 290.9	OMAHA APP CON 124.0 270.3	LINCOLN TOWER* 118.5(CTAF) 253.5	GND CON 121.9 275.8	CLNC DEL 120.7 225.4	UNICOM 122.95
-----------------------------	-------------------------------------	-----------------------------------------	-------------------------------	--------------------------------	-------------------------



CATEGORY	A	B	C	D
LPV DA	1445/24	250 (300-½)		
LNAV/VNAV DA	1720/60	525 (600-1¼)		
LNAV MDA	1720/24	525 (600-½)	1720/50 525 (600-1)	1720/60 525 (600-1¼)
CIRCLING	1720-1 501 (600-1)	1760-1 541 (600-1)	1820-1¾ 601 (700-1¾)	1960-2½ 741 (800-2½)

HIRL Rwy 18-36
REIL Rwy 14 and 17
MIRL Rwy 14-32 and 17-35

LINCOLN, NEBRASKA
Amdt 1C 12AUG21

40°51'N-96°46'W

RNAV (GPS) RWY 18

LINCOLN (LNK)

NC-2, 10 JUL 2025 to 07 AUG 2025

NC-2, 10 JUL 2025 to 07 AUG 2025

LINCOLN, NEBRASKA

AL-232 (FAA)

25219

WAAS CH 50114 W18A	APP CRS 177°	Rwy Ldg TDZE 1195 Apt Elev 1219
----------------------------------------	------------------------	-----------------------------------------------------

RNAV (GPS) RWY 18

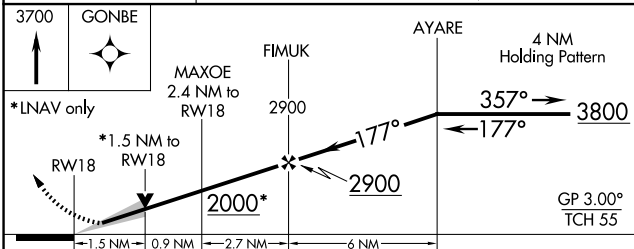
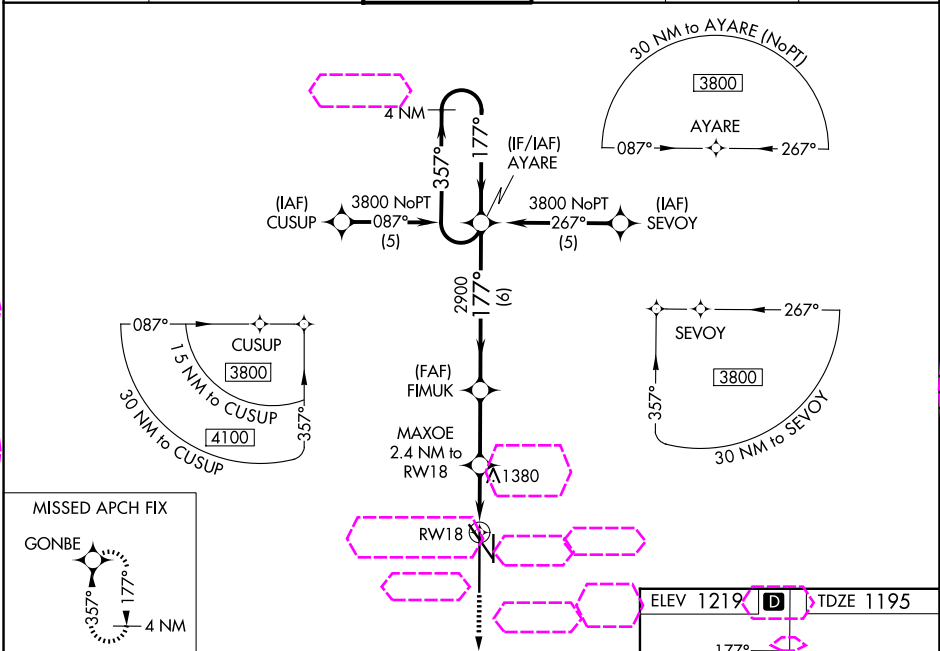
LINCOLN (LNK)

⚠ For uncompensated Baro-VNAV systems, LNAV/VNAV NA below -17°C (2°F) or above 54°C (130°F). DME/DME RNP-0.3 NA. When local altimeter setting not received, use Beairice altimeter setting and increase all DA 91 feet, all MDA 100 feet, increase LPV all Cats, LNAV Cats C and D, and Circling Cats C and D visibilities ¼ mile, and increase LNAV/VNAV all Cats visibility ½ mile. For inop MALS, when using Beairice altimeter setting increase LPV all Cats visibility to 1¼ mile. Baro-VNAV and VDP NA when using Beairice altimeter setting.

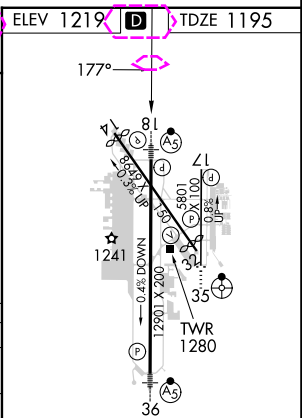


MISSED APPROACH:
Climb to 3700 direct GONBE and hold.

ATIS 118.05 290.9	OMAHA APP CON 124.0 270.3	LINCOLN TOWER* 118.5(CTAF) 253.5	GND CON 121.9 275.8	CLNC DEL 120.7 225.4	UNICOM 122.95
-----------------------------	-------------------------------------	--------------------------------------------	-------------------------------	--------------------------------	-------------------------



CATEGORY	A	B	C	D
LPV DA	1445/24	250 (300-½)		
LNAV/VNAV DA	1720/60	525 (600-1¼)		
LNAV MDA	1720/24	525 (600-½)	1720/50 525 (600-1)	1720/60 525 (600-1¼)
CIRCLING	1720-1 501 (600-1)	1760-1 541 (600-1)	1820-1¾ 601 (700-1¾)	1960-2½ 741 (800-2½)



LINCOLN, NEBRASKA
Amdt 1C 12AUG21

40°51'N-96°46'W

RNAV (GPS) RWY 18

NC-2, 07 AUG 2025 to 04 SEP 2025

NC-2, 07 AUG 2025 to 04 SEP 2025