

WAAS CH <b>40137</b> <b>W17A</b>	APP CRS <b>177°</b>	Rwy Idg <b>5400</b> TDZE <b>1219</b> Apt Elev <b>1219</b>
--	------------------------	---

RNAV (GPS) RWY 17  
LINCOLN (LNK)

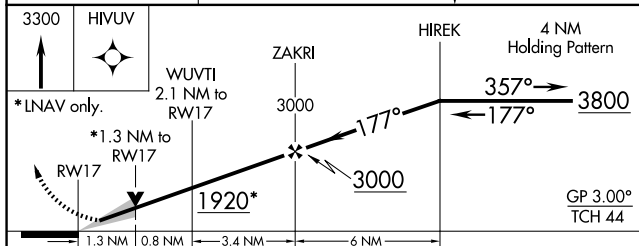
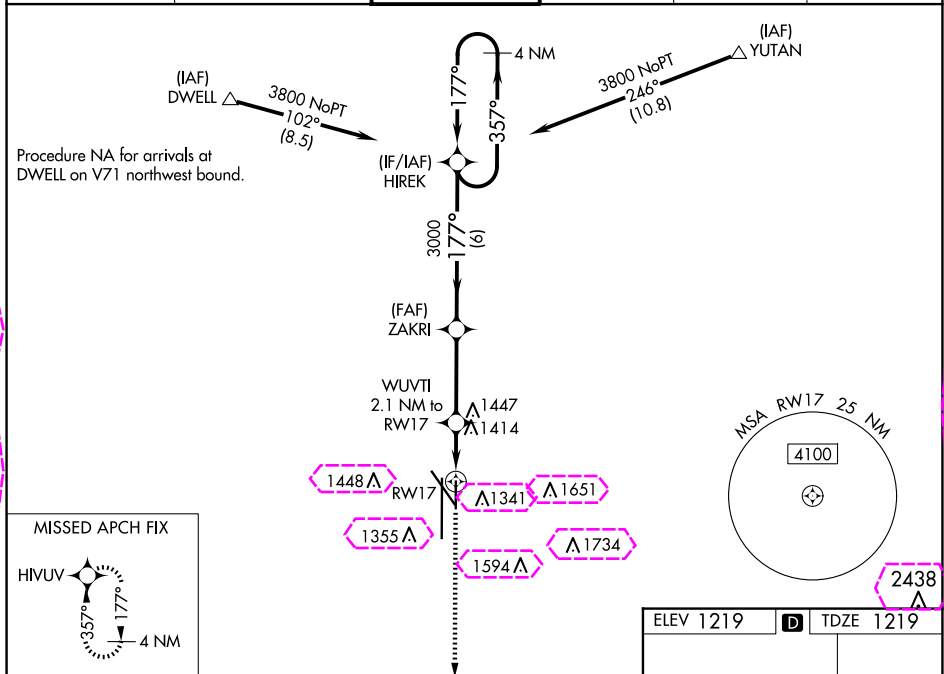
LINCOLN (LNK)


**T** Baro-VNAV NA when using Beatrice altimeter setting. For uncompensated Baro-VNAV systems, LNAV/VNAV NA below -22°C (-7°F) or above 54°C (130°F). DME/DME RNP-0.3 NA.

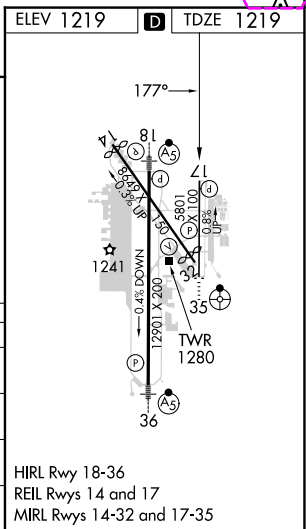
**A** When local altimeter setting not received, use Beatrice altimeter setting and increase all DA 91 feet, and all MDA 100 feet, increase LPV and LNAV/VNAV all Cats visibility ¼ mile, increase LNAV Cats C/D and Circling Cats C/D visibility ¼ mile.

**MISSED APPROACH:**  
Climb to 3300 direct  
HIVUV and hold.

ATIS 118.05 290.9	OMAHA APP CON 124.0 270.3	LINCOLN TOWER* 118.5(CTAF) 253.5	GND CON 121.9 275.8	CLNC DEL 120.7 225.4	UNICOM 122.95
----------------------	------------------------------	-------------------------------------	------------------------	-------------------------	------------------



CATEGORY		A	B	C	D
LPV	DA	1419- $\frac{3}{4}$ 200 (200- $\frac{3}{4}$ )			
LNAV/ VNAV	DA	1615-1 $\frac{3}{8}$ 396 (400-1 $\frac{3}{8}$ )			
LNAV	MDA	1680-1 461 (500-1)		1680-1 $\frac{3}{8}$ 461 (500-1 $\frac{3}{8}$ )	
		1680-1 461 (500-1)	1760-1 541 (600-1)	1820-1 $\frac{3}{4}$ 601 (700-1 $\frac{3}{4}$ )	1960-2 $\frac{1}{2}$ 741 (800-2 $\frac{1}{2}$ )



NC-2, 10 JUL 2025 to 07 AUG 2025

NC-2, 10 JUL 2025 to 07 AUG 2025

NC-2, 07 AUG 2025 to 04 SEP 2025