

LINCOLN, NEBRASKA

AI-232 (FAA)

25107

WAAS CH 42930 W14A	APP CRS 142°	Rwy Idg 8286 TDZE 1199 Apt Elev 1219
--	------------------------	---

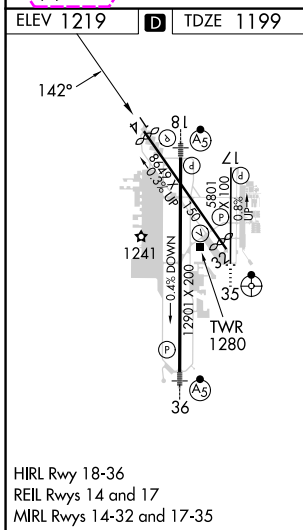
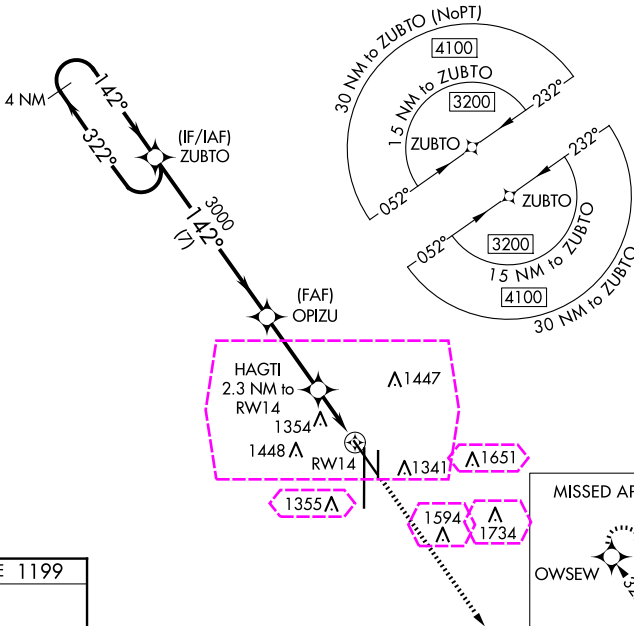
RNAV (GPS) RWY 14

LINCOLN (LNK)

⚠ For uncompensated Baro-VNAV systems, LNAV/VNAV NA below -25°C (-13°F) or above 54°C (130°F). DME/DME RNP-0.3 NA. When local altimeter setting not received, use Beatrice altimeter setting and increase all DA 91 feet and all MDA 100 feet, increase LPV all Cats and LNAV/VNAV all Cats visibility 1/8 mile, increase LNAV Cats C/D and Circling Cats C/D visibility 1/4 mile. Helicopter visibility reduction below 3/4 SM NA. Baro-VNAV and VDP NA when using Beatrice altimeter setting.

MISSED APPROACH: Climb to 3100 direct OWSEW and hold.

ATIS 118.05 290.9	OMAHA APP CON 124.0 270.3	LINCOLN TOWER* 118.5(CTAF) 253.5	GND CON 121.9 275.8	CLNC DEL 120.7 225.4	UNICOM 122.95
-----------------------------	-------------------------------------	--	-------------------------------	--------------------------------	-------------------------



4 NM Holding Pattern	ZUBTO	OPIZU	HAGTI 2.3 NM to RWY 14	3100	OWSEW
3200	322°	142°	3000	1960	*1.2 NM to RWY 14
GP 3.00°	TCH 48	7 NM	3.2 NM	1.1 NM	1.2 NM
CATEGORY	A	B	C	D	
LPV DA	1449-1 250 (300-1)				
LNAV/VNAV DA	1449-1 250 (300-1)				
LNAV MDA	1620-1 421 (500-1)		1620-1 421 (500-1 1/4)		
CIRCLING	1720-1 501 (600-1)	1760-1 541 (600-1)	1820-1 601 (700-1 3/4)	1960-2 741 (800-2 1/2)	

LINCOLN, NEBRASKA
Amdt 1B 12AUG21

40°51'N-96°46'W

LINCOLN (LNK)
RNAV (GPS) RWY 14

LINCOLN, NEBRASKA

AL-232 (FAA)

25219

WAAS CH 42930 W14A	APP CRS 142°	Rwy Ldg 8286 TDZE 1199 Apt Elev 1219
--	------------------------	---

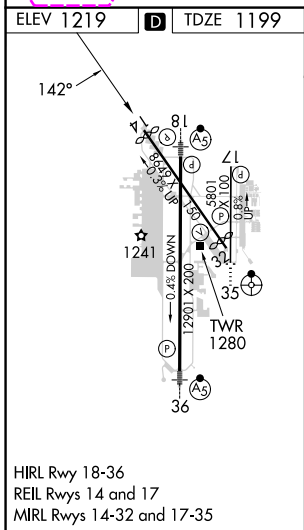
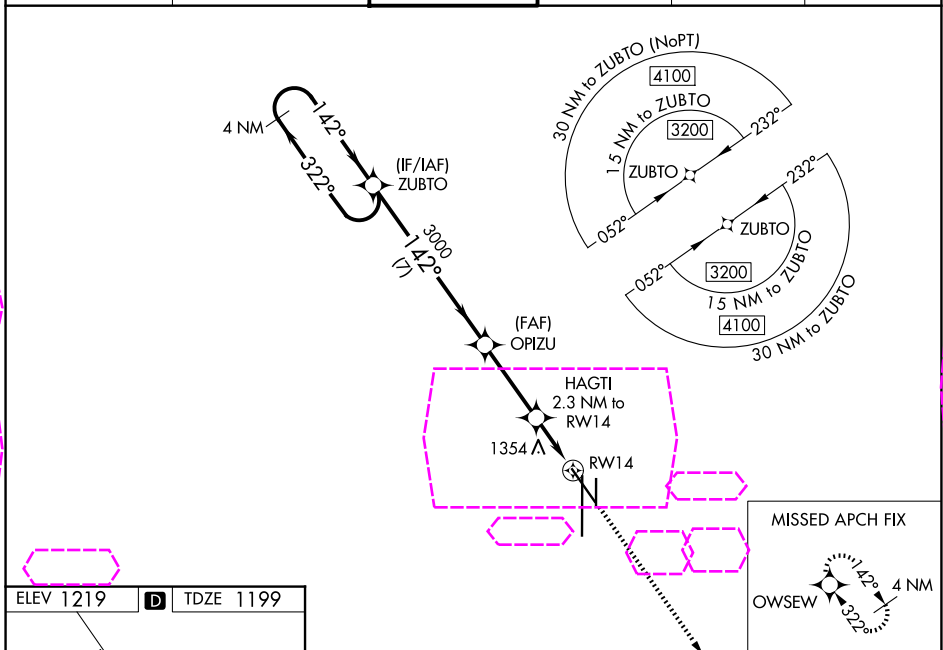
RNAV (GPS) RWY 14

LINCOLN (LNK)

⚠ For uncompensated Baro-VNAV systems, LNAV/VNAV NA below -25°C (-13°F) or above 54°C (130°F). DME/DME RNP-0.3 NA. When local altimeter setting not received, use Beatrice altimeter setting and increase all DA 91 feet and all MDA 100 feet, increase LPV all Cats and LNAV/VNAV all Cats visibility ½ mile, increase LNAV Cats C/D and Circling Cats C/D visibility ¼ mile. Helicopter visibility reduction below ¾ SM NA. Baro-VNAV and VDP NA when using Beatrice altimeter setting.

MISSED APPROACH: Climb to 3100 direct OWSEW and hold.

ATIS 118.05 290.9	OMAHA APP CON 124.0 270.3	LINCOLN TOWER* 118.5(CTAF) 253.5	GND CON 121.9 275.8	CLNC DEL 120.7 225.4	UNICOM 122.95
-----------------------------	-------------------------------------	--	-------------------------------	--------------------------------	-------------------------



4 NM Holding Pattern	ZUBTO	OPIZU	HAGTI 2.3 NM to RW14	3100 OWSEW
3200 ← 322°	142° →	142°	3000	*1.2 NM to RW14
GP 3.00°	TCH 48	*1960	RW14	
7 NM	3.2 NM	1.1 NM	1.2 NM	
CATEGORY	A	B	C	D
LPV DA	1449-1 250 (300-1)			
LNAV/VNAV DA	1449-1 250 (300-1)			
LNAV MDA	1620-1 421 (500-1)		1620-1¼ 421 (500-1¼)	
CIRCLING	1720-1 501 (600-1)	1760-1 541 (600-1)	1820-1¾ 601 (700-1¾)	1960-2½ 741 (800-2½)

LINCOLN, NEBRASKA
Amdt 1B 12AUG21

40°51'N-96°46'W

RNAV (GPS) RWY 14

NC-2, 07 AUG 2025 to 04 SEP 2025

NC-2, 07 AUG 2025 to 04 SEP 2025