

LOC I-OCZ <u>111.1</u>	APP CRS 177°	Rwy Ldg TDZE Apt Elev	12901 1195 1219
----------------------------------	------------------------	-----------------------------	--

ILS Y or LOC Y RWY 18
LINCOLN (LNK)

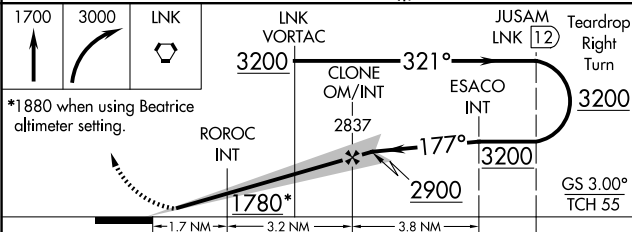
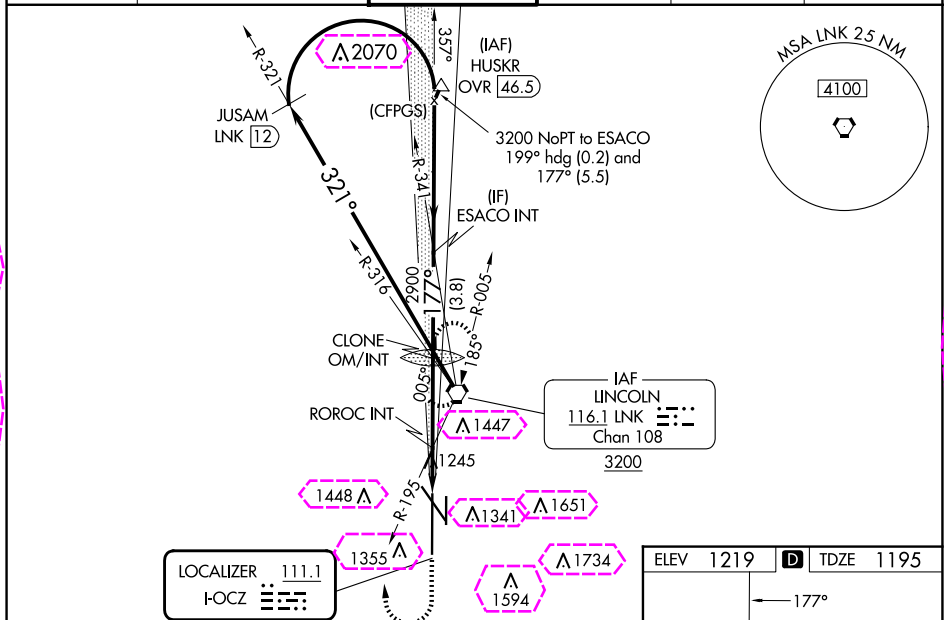
LINCOLN (LNI)

⚠ When local altimeter setting not received use Beatrice altimeter setting and increase DA to 1486; and all MDA 100 feet, increase visibility S-LOC 18 Cat C, D, E and Circling Cats C and D ¼ SM: increase ROROC fix minimums S-LOC 18 Cat C/D/E visibility ¾ SM and Circling Cats C and D ¼ SM. For inop ALS, increase S-ILS 18 Cat E visibility to RVR 4000, S-LOC 18 Cat E visibility to 1¾ SM, and ROROC fix minimums S-LOC 18 Cat E visibility to 1½ SM. For inop ALS when using Beatrice altimeter setting, increase S-ILS 18 all Cats visibility to RVR 4500, S-LOC 18 Cat E visibility to 2 SM, and ROROC fix minimums S-LOC 18 Cat C/D/E visibility to 1¾ SM.
#RVR 1800 authorized with use of FD or AP or HUD to DA.

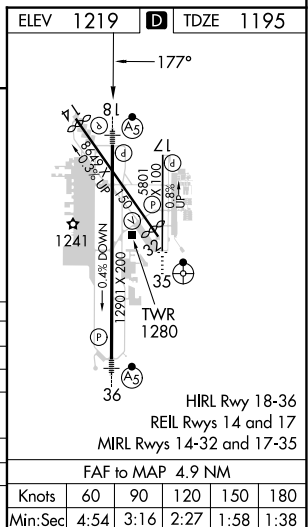
MALSR

MISSED APPROACH:
Climb to 1700 then
climbing right turn to
3000 direct LNK
VORTAC and hold.

ATIS	OMAHA APP CON	LINCOLN TOWER★	GND CON	CLNC DEL	UNICOM
118.05 290.9	124.0 270.3	118.5(CTAF) 253.5	121.9 275.8	120.7 225.4	122.95



CATEGORY	A	B	C	D	E
S-ILS 18 #	1395/24 200 (200-½)				
S-LOC 18	1780/24 585 (600-½)		1780-1¼ 585 (600-1¼)		
CIRCLING	1780-1 561 (600-1)		1820-1¾ 601 (700-1¾)	1960-2½ 741 (800-2½)	2040-3 821 (900-3)
ROROC FIX MINIMUMS (DUAL VOR RECEIVERS REQUIRED)					
S-LOC 18	1720/24 525 (600-½)		1720/55 525 (600-1)		
CIRCLING	1720-1 501 (600-1)	1760-1 541 (600-1)	1820-1¾ 601 (700-1¾)	1960-2½ 741 (800-2½)	2040-3 821 (900-3)



LINCOLN, NEBRASKA
Amdt 7E 12JUN25

40°51'N-96°46'W

LINCOLN (LNK)

ILS Y or LOC Y RWY 18

NC-2, 10 JUL 2025 to 07 AUG 2025

NC-2, 10 JUL 2025 to 07 AUG 2025

LINCOLN, NEBRASKA

AL-232 (FAA)

25219

LOC FOCZ	APP CRS	Rwy Ldg	12901
111.1	177°	TDZE	1195
		Apt Elev	1219

ILS Y or LOC Y RWY 18

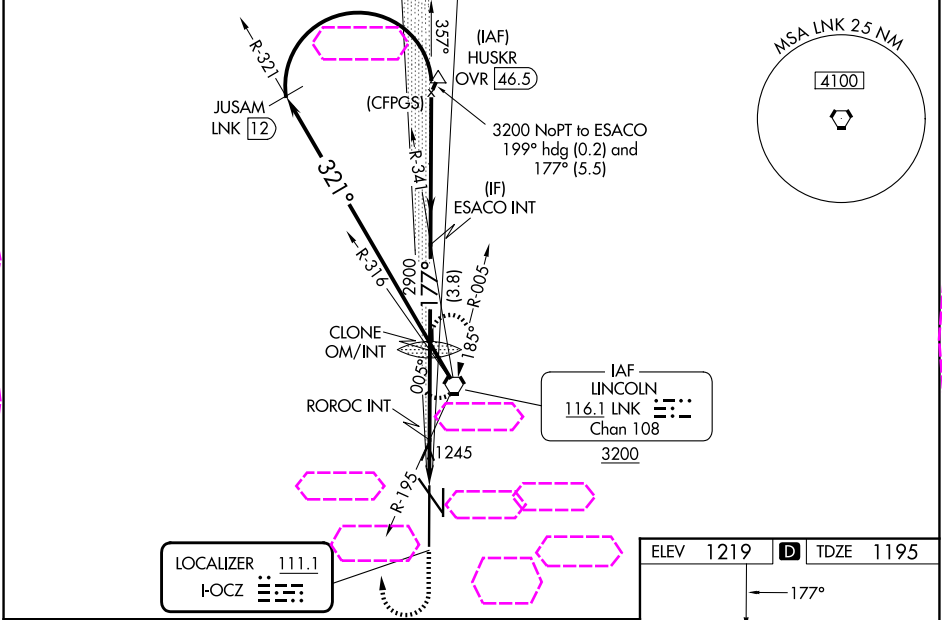
LINCOLN (LNK)

⚠ When local altimeter setting not received use Beatrice altimeter setting and increase DA to 1486; and all MDA 100 feet, increase visibility S-LOC 18 Cat C, D, E and Circling Cats C and D 1/4 SM; increase ROROC fix minimums S-LOC 18 Cat C/D/E visibility 3/8 SM and Circling Cats C and D 1/4 SM. For inop ALS, increase S-ILS 18 Cat E visibility to RVR 4000, S-LOC 18 Cat E visibility to 1 3/4 SM, and ROROC fix minimums S-LOC 18 Cat E visibility to 1 1/2 SM. For inop ALS when using Beatrice altimeter setting, increase S-ILS 18 all Cats visibility to RVR 4500, S-LOC 18 Cat E visibility to 2 SM, and ROROC fix minimums S-LOC 18 Cat C/D/E visibility to 1 3/4 SM.
#RVR 1800 authorized with use of FD or AP or HUD to DA.

MALSR

MISSED APPROACH:
Climb to 1700 then climbing right turn to 3000 direct LNK VORTAC and hold.

ATIS	OMAHA APP CON	LINCOLN TOWER ★	GND CON	CLNC DEL	UNICOM
118.05 290.9	124.0 270.3	118.5 (CTAF) 253.5	121.9 275.8	120.7 225.4	122.95



1700 3000 LNK

*1880 when using Beatrice altimeter setting.

CATEGORY	A	B	C	D	E
S-ILS 18#	1395/24 200 (200-1/2)				
S-LOC 18	1780/24	585 (600-1/2)	1780-1 1/4 585 (600-1 1/4)		
CIRCLING	1780-1	561 (600-1)	1820-1 3/4 601 (700-1 3/4)	1960-2 1/2 741 (800-2 1/2)	2040-3 821 (900-3)
ROROC FIX MINIMUMS (DUAL VOR RECEIVERS REQUIRED)					
S-LOC 18	1720/24	525 (600-1)	1720/55 525 (600-1)		
CIRCLING	1720-1 501 (600-1)	1760-1 541 (600-1)	1820-1 3/4 601 (700-1 3/4)	1960-2 1/2 741 (800-2 1/2)	2040-3 821 (900-3)

ELEV 1219 D TDZE 1195

HIRL Rwy 18-36
REIL Rwys 14 and 17
MIRL Rwys 14-32 and 17-35

FAF to MAP 4.9 NM

Knots	60	90	120	150	180
Min:Sec	4:54	3:16	2:27	1:58	1:38

NC-2, 07 AUG 2025 to 04 SEP 2025

NC-2, 07 AUG 2025 to 04 SEP 2025

LINCOLN, NEBRASKA
Amdt 7E 12JUN25

40°51'N-96°46'W

ILS Y or LOC Y RWY 18

LINCOLN (LNK)