

LAREDO, TEXAS


AL-226 (FAA)

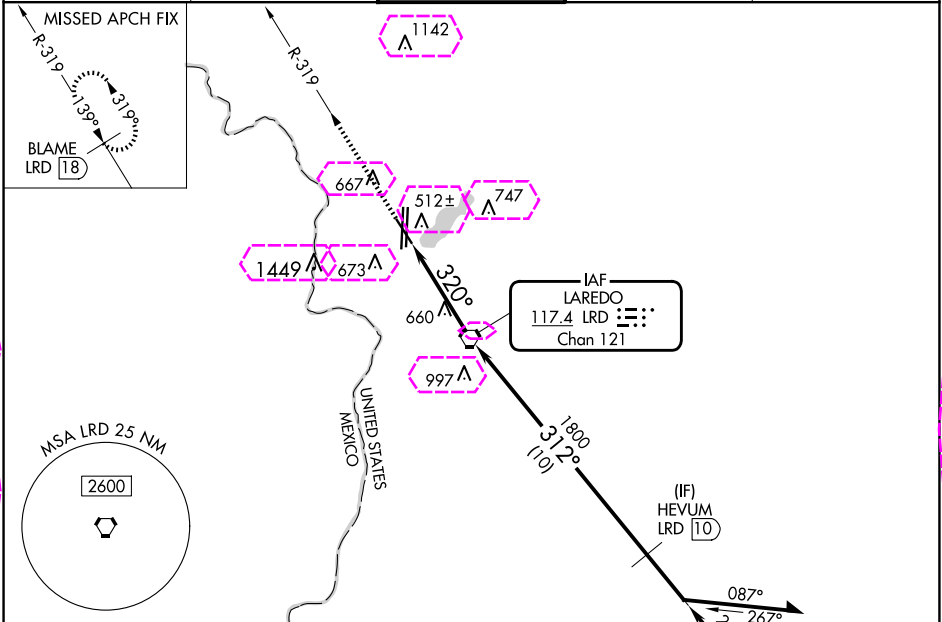
25163

VORTAC LRD	APP CRS	Rwy Ldg	5927
117.4	320°	TDZE	494
Chan 121		Apt Elev	508

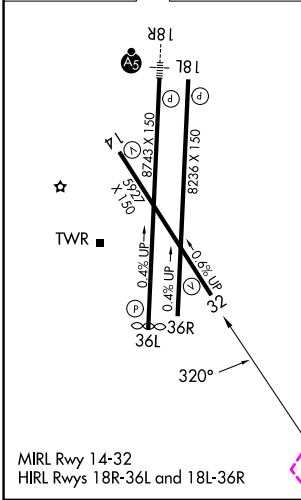
# VOR or TACAN RWY 32

LAREDO INTL (L.R.D)

 Circling NA west of Rwy 14 and 36L. Rwy 32 helicopter visibility reduction below 3/4 SM NA. DME required.		MISSED APPROACH: Climb to 2600 on LRD VORTAC R-319 to BLAME/LRD 18 DME and hold.	
ATIS	HOUSTON CENTER	LAREDO TOWER ★	GND CON
125.775	127.8 307.2	120.1 (CTAF) 257.9	121.8
			UNICOM
			122.95



ELEV 508	D	TDZE 494
----------	---	----------



2600 ↑ R-319	BLAME LRD 18				
CATEGORY	A	B	C	D	E
S-32	920-1	426 (500-1)	920-1¼ 426 (500-1¼)		
<b>C</b> CIRCLING	940-1 432 (500-1)	980-1 472 (500-1)	1100-1½ 592 (600-1½)	1200-2¼ 692 (700-2¼)	1200-2½ 692 (700-2½)

LAREDO, TEXAS

27°33'N-99°28'W

LAREDO INTL (L.R.D)

Amdt 11A 01MAR18

# VOR or TACAN RWY 32

LAREDO, TEXAS

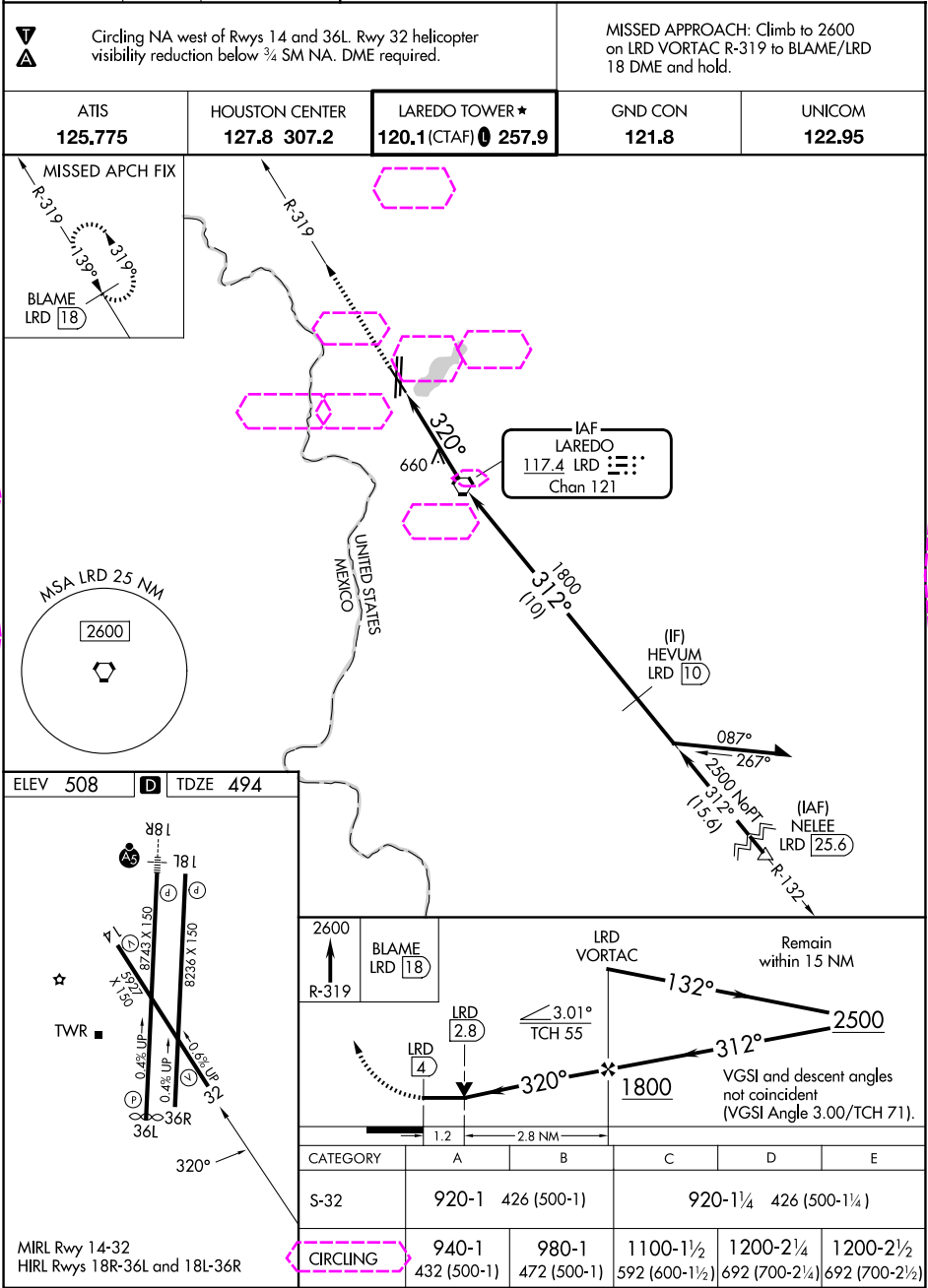
AL-226 (FAA)

25219

VORTAC LRD	APP CRS	Rwy Ldg
117.4	320°	5927
Chan 121		TDZE 494
		Apt Elev 508

# VOR or TACAN RWY 32

LAREDO INTL (L.R.D)



SC-3, 07 AUG 2025 to 04 SEP 2025

SC-3, 07 AUG 2025 to 04 SEP 2025