

LAREDO, TEXAS

AL-226 (FAA)

25163

VORTAC LRD 117.4 Chan 121	APP CRS 139°	Rwy Ldg TDZE Apt Elev 5927 508 508
---	------------------------	--

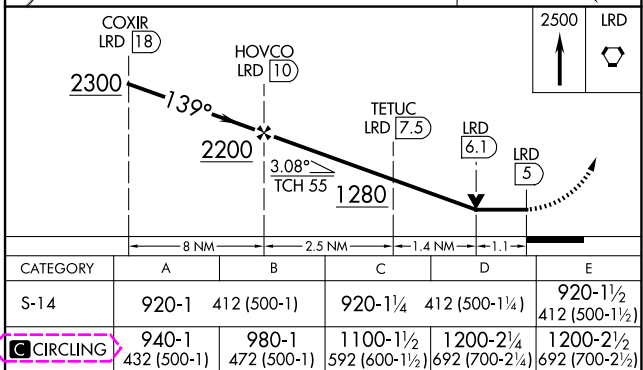
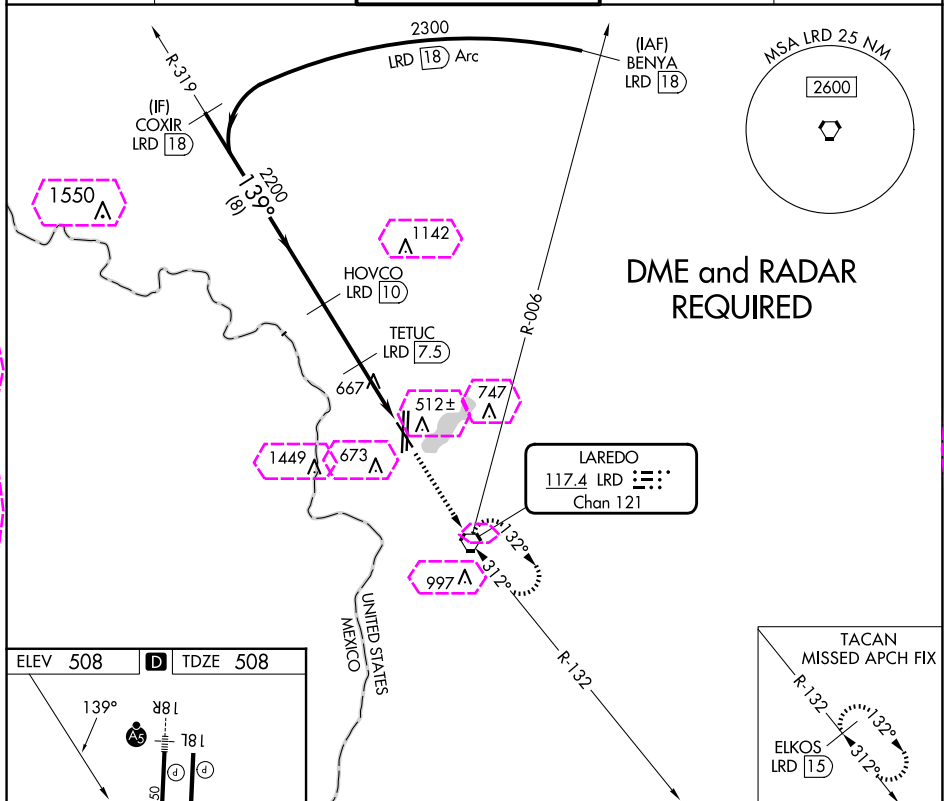
VOR or TACAN RWY 14

LAREDO INTL (LRD)

⚠ Circling NA west of Rwy 14 and 36L.
⚠ DME required.

MISSED APPROACH: Climb to 2500 direct LRD VORTAC and hold, continue climb-in-hold to 2500 (TACAN aircraft continue on LRD VORTAC R-132 to ELKOS/15 DME and hold SE, right turn, 312° inbound).

ATIS 125.775	HOUSTON CENTER 127.8 307.2	LAREDO TOWER ★ 120.1 (CTAF) 0 257.9	GND CON 121.8	UNICOM 122.95
------------------------	--------------------------------------	---	-------------------------	-------------------------



LAREDO, TEXAS
Amdt 10A 01MAR18

27°33'N-99°28'W

LAREDO INTL (LRD)
VOR or TACAN RWY 14

SC-3, 10 JUL 2025 to 07 AUG 2025

SC-3, 10 JUL 2025 to 07 AUG 2025

LAREDO, TEXAS

AL-226 (FAA)

25219

VORTAC LRD 117.4 Chan 121	APP CRS 139°	Rwy Ldg TDZE Apt Elev 5927 508 508
---	------------------------	--

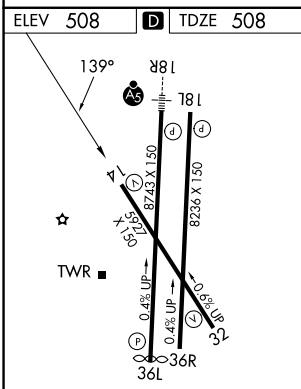
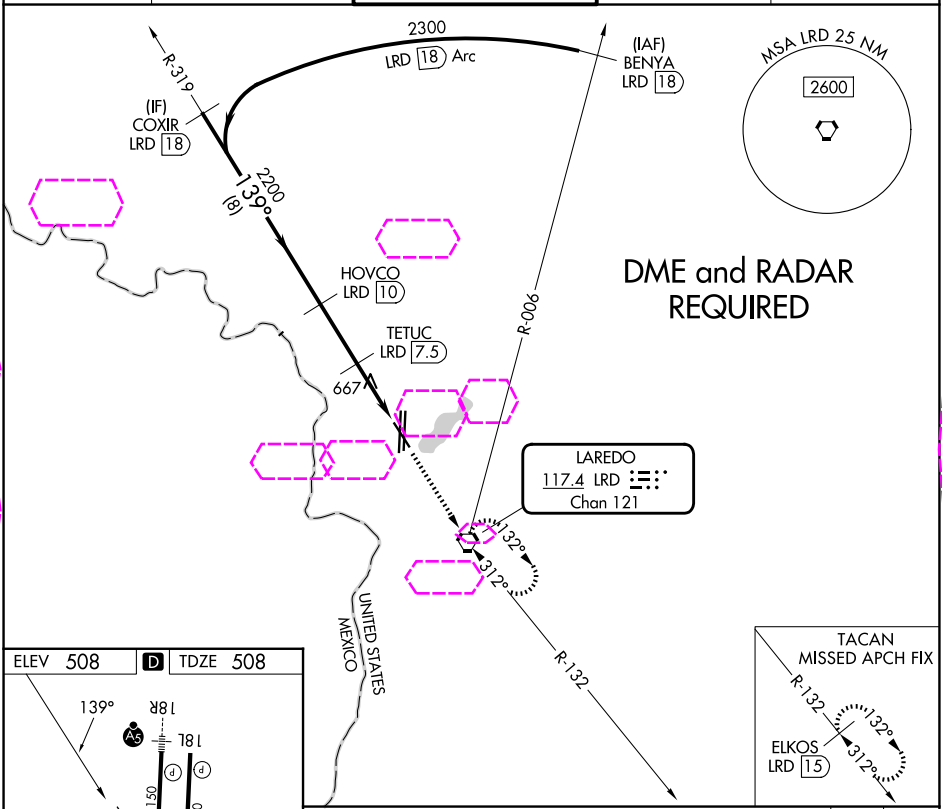
VOR or TACAN RWY 14

LAREDO INTL (LRD)

⚠ Circling NA west of Rwy 14 and 36L. DME required.

⚠ MISSED APPROACH: Climb to 2500 direct LRD VORTAC and hold, continue climb-in-hold to 2500 (TACAN aircraft continue on LRD VORTAC R-132 to ELKOS/15 DME and hold SE, right turn, 312° inbound).

ATIS 125.775	HOUSTON CENTER 127.8 307.2	LAREDO TOWER ★ 120.1 (CTAF) 0 257.9	GND CON 121.8	UNICOM 122.95
------------------------	--------------------------------------	---	-------------------------	-------------------------



		8 NM		2.5 NM		1.4 NM		1.1 NM			
CATEGORY		A		B		C		D		E	
S-14		920-1		412 (500-1)		920-1¼		412 (500-1¼)		920-1½ 412 (500-1½)	
MIRL Rwy 14-32 HIRL Rwys 18R-36L and 18L-36R		CIRCLING 940-1 432 (500-1)		980-1 472 (500-1)		1100-1½ 592 (600-1½)		1200-2¼ 692 (700-2¼)		1200-2½ 692 (700-2½)	

LAREDO, TEXAS

27°33'N-99°28'W

LAREDO INTL (LRD)

Amdt 10A 01MAR18

VOR or TACAN RWY 14

SC-3, 07 AUG 2025 to 04 SEP 2025

SC-3, 07 AUG 2025 to 04 SEP 2025