

LAREDO, TEXAS

AL-226 (FAA)

25163

WAAS CH 86633 W32A	APP CRS 322°	Rwy Ldg 5927 TDZE 494 Apt Elev 508
--	------------------------	---

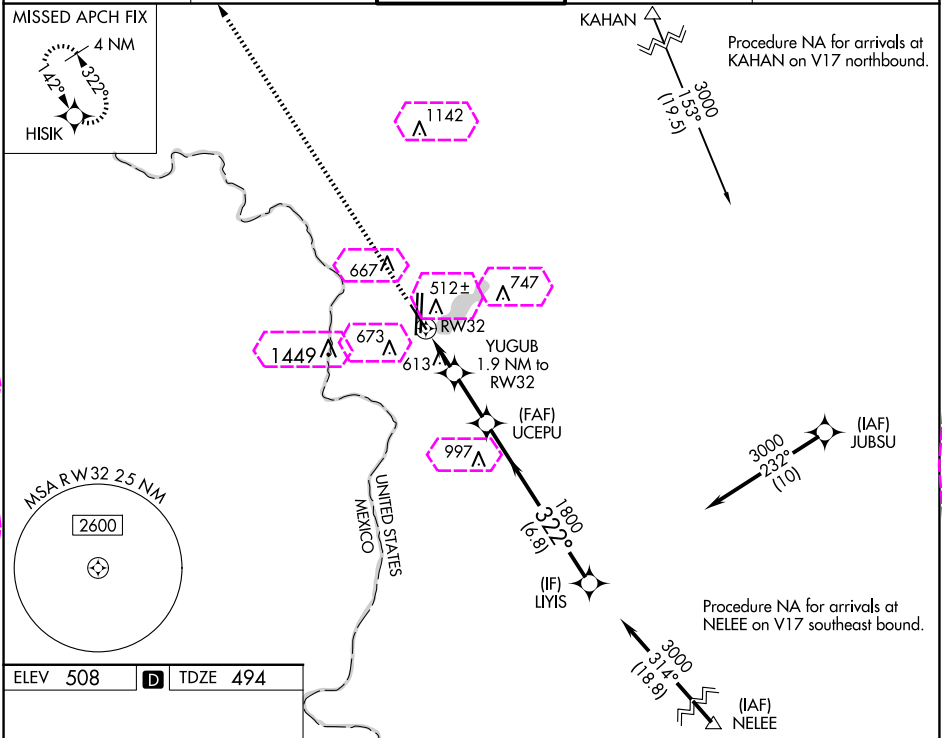
RNAV (GPS) RWY 32

LAREDO INTL (L.R.D)

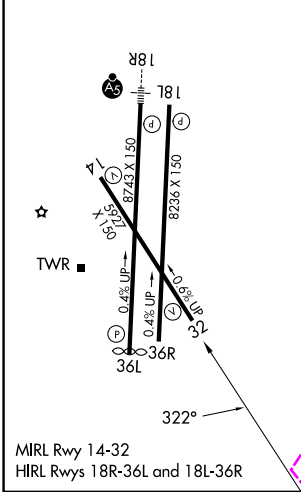
⚠ For uncompensated Baro-VNAV systems, LNAV/VNAV NA below 1°C (34°F) or above 54°C (130°F). Circling NA west of Rwy 14 and 36L. Rwy 32 helicopter visibility reduction below ¾ SM NA. DME/DME RNP-0.3 NA.

MISSED APPROACH: Climb to 3000 direct HISIK and hold.

ATIS 125.775	HOUSTON CENTER 127.8 307.2	LAREDO TOWER ★ 120.1 (CTAF) 257.9	GND CON 121.8	UNICOM 122.95
------------------------	--------------------------------------	---	-------------------------	-------------------------



ELEV 508	D	TDZE 494
-----------------	----------	-----------------



3000	HISIK	VGSI and RNAV glidepath not coincident (VGSI Angle 3.00/TCH 71).				LYIS
* LNAV only		YUGUB 1.9 NM to RW32				UCEPU 1800
RW32		* 1.1 NM to RW32				3000
1.1 NM		0.8 NM				2.1 NM
CATEGORY		A				B
LPV DA		744-¾				250 (300-¾)
LNAV/VNAV DA		826-1				332 (400-1)
LNAV MDA		880-1				386 (400-1)
GP 3.00° TCH 50		880-1½				386 (400-1½)
CIRCLING		940-1				980-1
		432 (500-1)				472 (500-1)
		1100-1½				1200-2¼
		592 (600-1½)				692 (700-2¼)
		1200-2½				692 (700-2½)

LAREDO, TEXAS
Amdt 2 01FEB18

27°33'N-99°28'W

RNAV (GPS) RWY 32

SC-3, 10 JUL 2025 to 07 AUG 2025

SC-3, 10 JUL 2025 to 07 AUG 2025

LAREDO, TEXAS

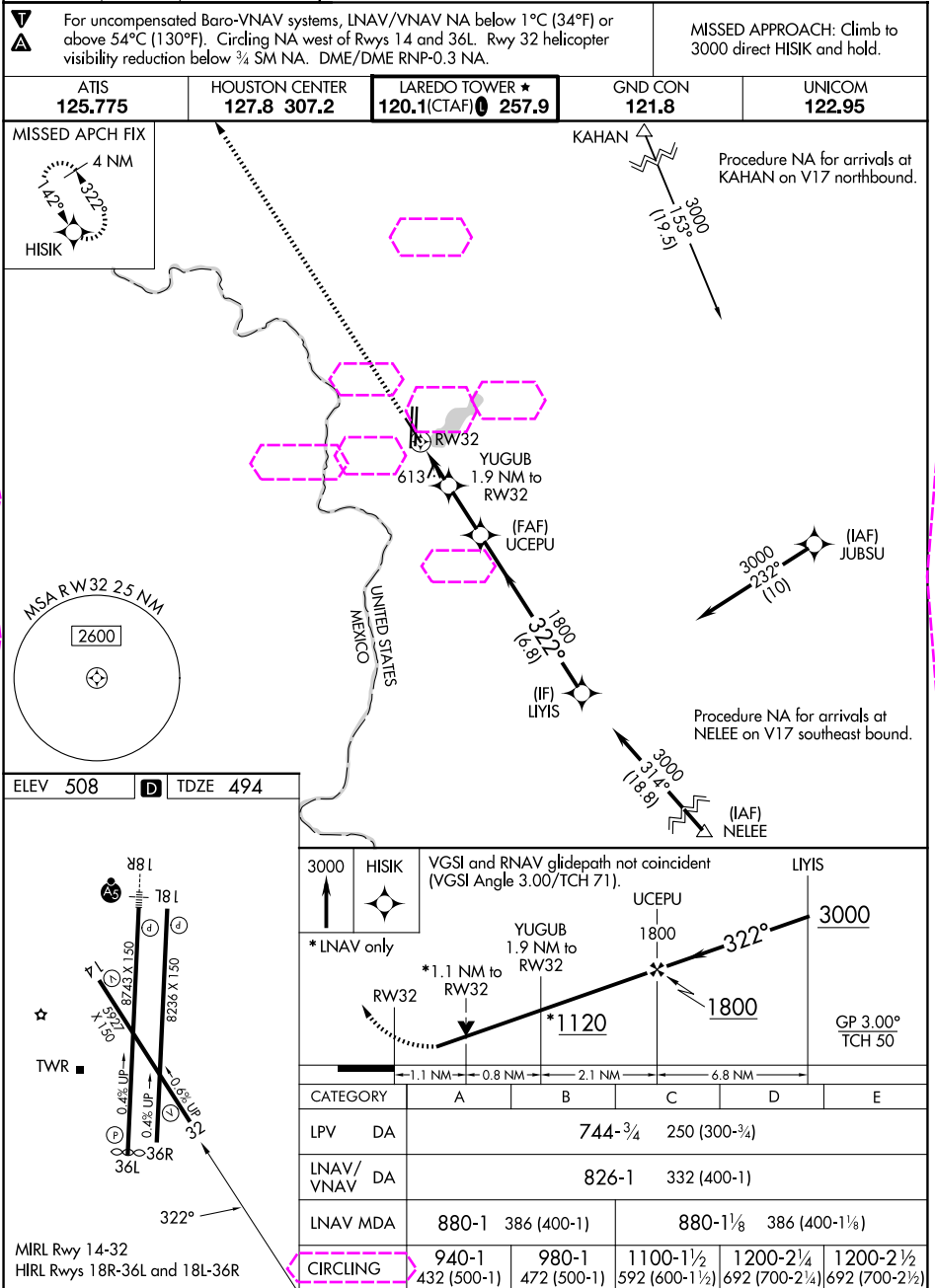
AL-226 (FAA)

25219

WAAS CH 86633 W32A	APP CRS 322°	Rwy Ldg 5927 TDZE 494 Apt Elev 508
--	------------------------	---

RNAV (GPS) RWY 32

LAREDO INTL (L.R.D)



SC-3, 07 AUG 2025 to 04 SEP 2025

SC-3, 07 AUG 2025 to 04 SEP 2025

LAREDO, TEXAS
Amdt 2 01FEB18

27°33'N-99°28'W

RNAV (GPS) RWY 32

LAREDO INTL (L.R.D)