

LAREDO, TEXAS

AL-226 (FAA)

25163

WAAS Ch 82599 W18A	APP CRS 178°	Rwy Ldg 8743 TDZE 504 Apt Elev 508
--	------------------------	---

RNAV (GPS) RWY 18R

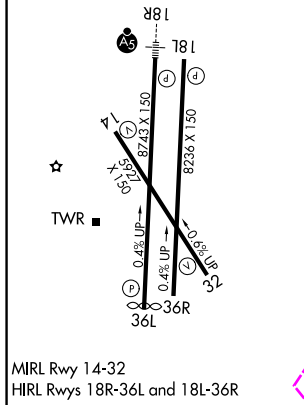
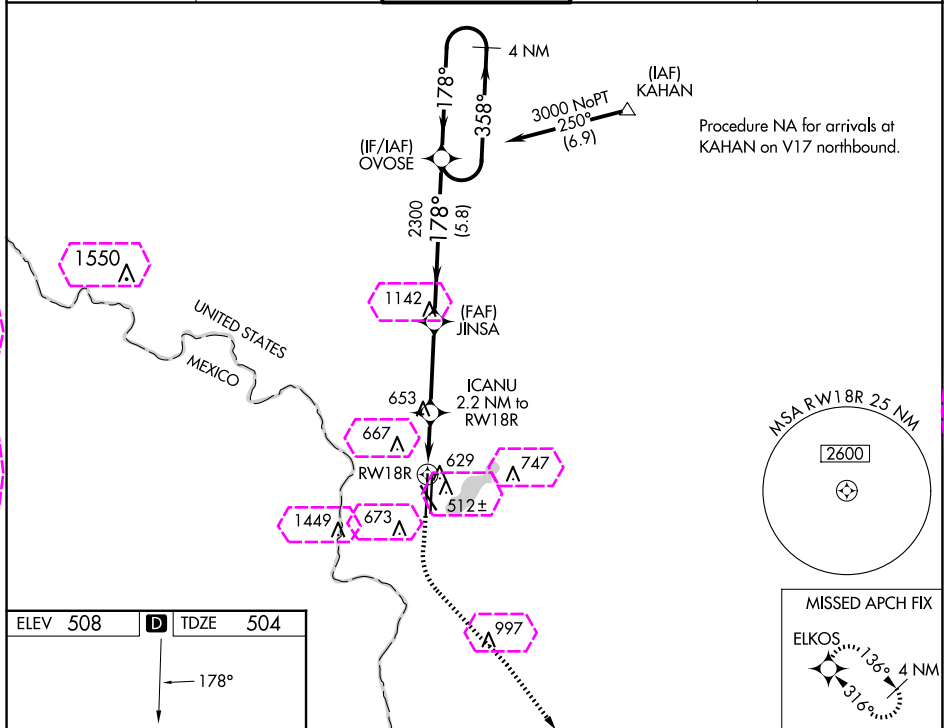
LAREDO INTL (L.R.D)


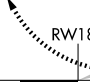
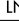
▼ For uncompensated Baro-VNAV systems, LNAV/VNAV NA below 1°C (34°F) or above 54°C (130°F). Circling NA West of Rwy 14 and 36L. DME/DME RNP-0.3 NA. For inop ALS, increase LPV Cat E visibility to ¾ SM, LNAV/VNAV all Cats visibility to ⅞ SM, and LNAV Cats C/D/E to 1 SM.

MALSR
A5

MISSED APPROACH:
Climb to 1000 then climbing left turn to 2500 direct ELKOS and hold.

ATIS 125.775	HOUSTON CENTER 127.8 307.2	LAREDO TOWER* 120.1(CTAF) 0 257.9	GND CON 121.8	UNICOM 122.95
------------------------	--------------------------------------	---	-------------------------	-------------------------



1000 ↑	2500 ↘	ELKOS 	VGSI and RNAV glidepath not coincident (VGSI Angle 3.00/TCH 50).		4 NM Holding Pattern	
*LNAV only		ICANU 2.2 NM to RW18R	JINSA 2300	OVOSE	358° → ← 178° 3000	
		*1 NM to RW18R	*1260	2300	GP 3.00° TCH 57	
1 NM		1.2	3.3 NM	5.8 NM		
CATEGORY	A		B	C	D E	
LPV DA			704-½ 200 (200-½)			
LNAV/ VNAV DA			810-½ 306 (400-½)			
LNAV MDA	880-½ 376 (400-½)		880-⅝ 376 (400-⅝)			
 CIRCLING	940-1 432 (500-1)	980-1 472 (500-1)	1100-1½ 592 (600-1½)	1200-2¼ 692 (700-2¼)	1200-2½ 692 (700-2½)	

LAREDO, TEXAS
Amdt 2 01FEB18

27°33'N-99°28'W

RNAV (GPS) RWY 18R

SC-3, 10 JUL 2025 to 07 AUG 2025

SC-3, 10 JUL 2025 to 07 AUG 2025

LAREDO, TEXAS

AL-226 (FAA)

25219

WAAS Ch 82599 W18A	APP CRS 178°	Rwy Ldg 8743 TDZE 504 Apt Elev 508
--	------------------------	---

RNAV (GPS) RWY 18R

LAREDO INTL (L.R.D)

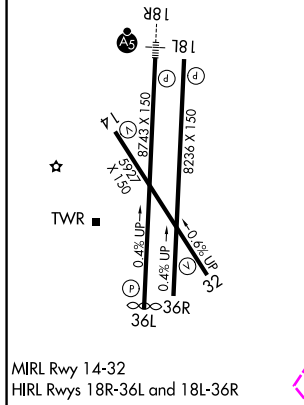
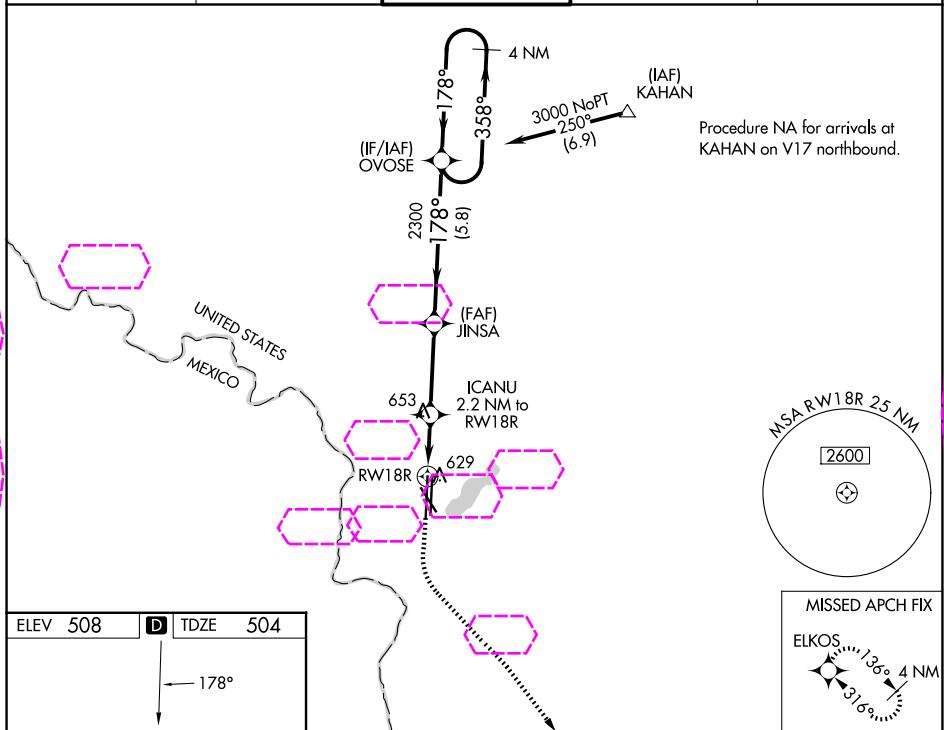
▼ For uncompensated Baro-VNAV systems, LNAV/VNAV NA below 1°C (34°F) or above 54°C (130°F). Circling NA West of Rwy 14 and 36L. DME/DME RNP-0.3 NA.


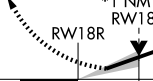
▲ For inop ALS, increase LPV Cat E visibility to $\frac{3}{4}$ SM, LNAV/VNAV all Cats visibility to $\frac{7}{8}$ SM, and LNAV Cats C/D/E to 1 SM.

MALSR

MISSED APPROACH:
Climb to 1000 then climbing left turn to 2500 direct ELKOS and hold.

ATIS 125.775	HOUSTON CENTER 127.8 307.2	LAREDO TOWER* 120.1(CTAF) 257.9	GND CON 121.8	UNICOM 122.95
------------------------	--------------------------------------	---	-------------------------	-------------------------



1000 ↑	2500 ↘	ELKOS 	VGSI and RNAV glidepath not coincident (VGSI Angle 3.00/TCH 50).		4 NM Holding Pattern	
*LNAV only			JINSA 2300	OVOSE	358° → ← 178° 3000	
ICANU 2.2 NM to RW18R			*1260	2300	GP 3.00° TCH 57	
*1 NM to RW18R						
			1 NM	1.2	3.3 NM	5.8 NM
CATEGORY		A	B	C	D	E
LPV DA	704-½ 200 (200-½)					
LNAV/ VNAV DA	810-½ 306 (400-½)					
LNAV MDA	880-½ 376 (400-½)			880-⅝ 376 (400-⅝)		
CIRCLING	940-1 432 (500-1)	980-1 472 (500-1)	1100-1½ 592 (600-1½)	1200-2¼ 692 (700-2¼)	1200-2½ 692 (700-2½)	

LAREDO, TEXAS
Amdt 2 01FEB18

27°33'N-99°28'W

RNAV (GPS) RWY 18R

SC-3, 07 AUG 2025 to 04 SEP 2025

SC-3, 07 AUG 2025 to 04 SEP 2025