

LAREDO, TEXAS

AL-226 (FAA)

25163

WAAS Ch <b>77899</b> <b>W18B</b>	APP CRS <b>178°</b>	Rwy Ldg TDZE <b>499</b> Apt Elev <b>508</b>
--	------------------------	---

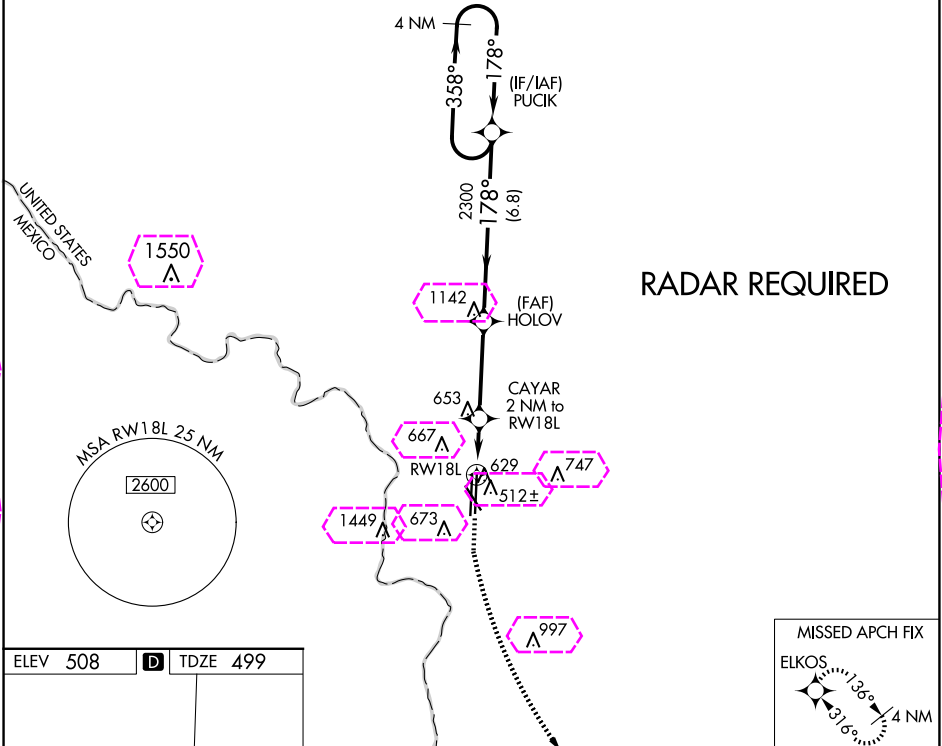
# RNAV (GPS) RWY 18L

LAREDO INTL (L.R.D)

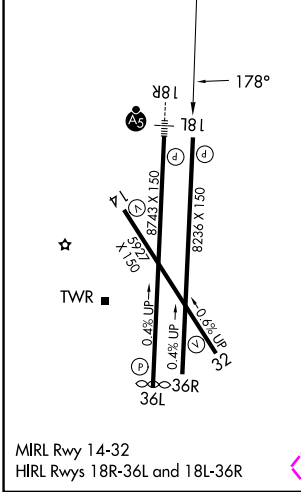
**⚠** For uncompensated Baro-VNAV systems, LNAV/VNAV NA below 1°C (34°F) or above 54°C (130°F).  
Circling NA west of Rwy 14 and 36L. DME/DME RNP-0.3 NA.

MISSED APPROACH: Climb to 1000 then climbing left turn to 2500 direct ELKOS and hold.

ATIS <b>125.775</b>	HOUSTON CENTER <b>127.8 307.2</b>	LAREDO TOWER ★ <b>120.1(CTAF) 257.9</b>	GND CON <b>121.8</b>	UNICOM <b>122.95</b>
------------------------	--------------------------------------	--	-------------------------	-------------------------



ELEV 508	<b>D</b>	TDZE 499
----------	----------	----------



1000	2500	ELKOS	HOLOV	PUCK	4 NM Holding Pattern
*LNAV only	CAYAR 2 NM to RWY18L	*1 NM to RWY18L	2300	358°	3000
RWY18L	1180*	2300	178°	178°	GP 3.00° TCH 51
1 NM	1 NM	3.5 NM	6.8 NM		
CATEGORY	A	B	C	D	E
LPV DA	699-3/4 200 (200-3/4)				
LNAV/VNAV DA	810-7/8 311 (400-7/8)				
LNAV MDA	880-1	381 (400-1)	880-1 1/8	381 (400-1 1/8)	
<b>CIRCLING</b>	940-1 432 (500-1)	980-1 472 (500-1)	1100-1 1/2 592 (600-1 1/2)	1200-2 1/4 692 (700-2 1/4)	1200-2 1/2 692 (700-2 1/2)

LAREDO, TEXAS  
Amdt 1 01FEB18

27°33'N-99°28'W

# RNAV (GPS) RWY 18L

SC-3, 10 JUL 2025 to 07 AUG 2025

SC-3, 10 JUL 2025 to 07 AUG 2025

SC-3, 07 AUG 2025 to 04 SEP 2025