

LAREDO, TEXAS

AL-226 (FAA)

25163

WAAS CH 65841 W14A	APP CRS 142°	Rwy Ldg TDZE 508 Apt Elev 508
--	------------------------	---

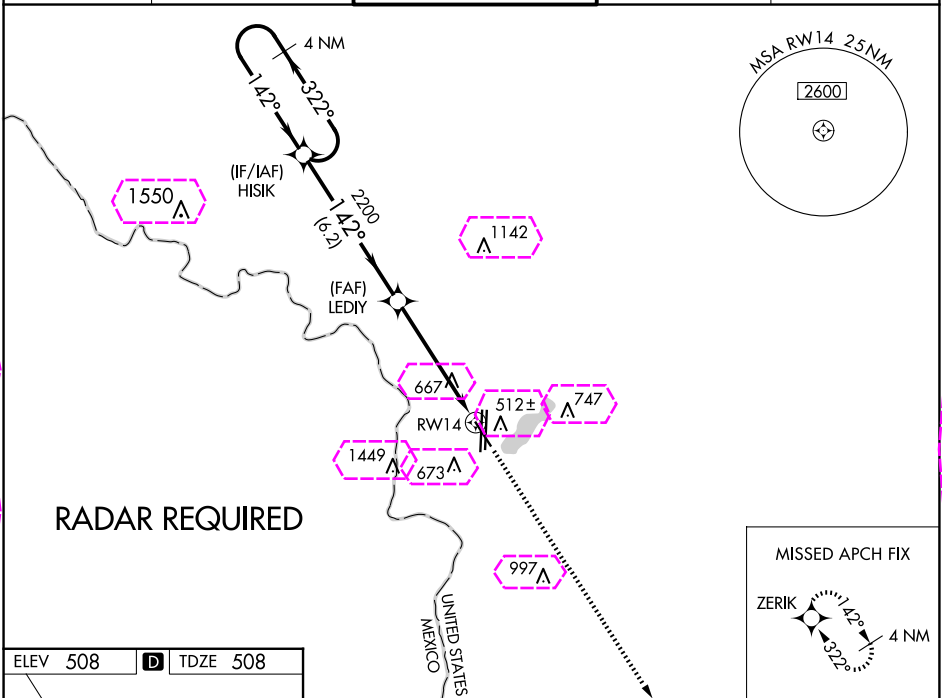
RNAV (GPS) RWY 14

LAREDO INTL (L.R.D)

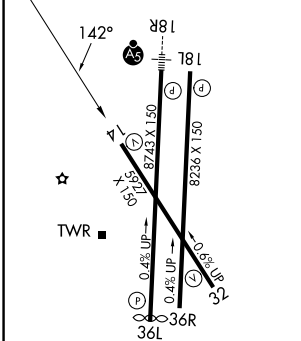
⚠ For uncompensated Baro-VNAV systems, LNAV/VNAV NA below 1°C (34°F) or above 54°C (130°F). Circling NA west of Rwy 14 and 36L.
⚠ DME/DME RNP-0.3 NA.

MISSED APPROACH: Climb to 2500 direct ZERIK and hold.

ATIS 125.775	HOUSTON CENTER 127.8 307.2	LAREDO TOWER ★ 120.1(CTAF) 257.9	GND CON 121.8	UNICOM 122.95
------------------------	--------------------------------------	--	-------------------------	-------------------------



ELEV 508	D	TDZE 508
----------	----------	----------



MIRL Rwy 14-32
HIRL Rwy 18R-36L and 18L-36R

4 NM Holding Pattern						ZERIK		
3000			2200					
GP 3.00° TCH 55			*LNAV only.					
6.2 NM			3.9 NM					
1.3			RW14					
CATEGORY	A	B	C	D	E			
LPV DA	758- ³ / ₄ 250 (300- ³ / ₄)							
LNAV/ VNAV DA	810- ⁷ / ₈ 302 (400- ⁷ / ₈)							
LNAV MDA	960-1	452 (500-1)	960-1 ³ / ₈		452 (500-1 ³ / ₈)			
CIRCLING	960-1 452 (500-1)	980-1 472 (500-1)	1100-1 ¹ / ₂ 592 (600-1 ¹ / ₂)	1200-2 ¹ / ₄ 692 (700-2 ¹ / ₄)	1200-2 ¹ / ₂ 692 (700-2 ¹ / ₂)			

LAREDO, TEXAS
Amdt 1 01FEB18

27°33'N-99°28'W

RNAV (GPS) RWY 14

SC-3, 10 JUL 2025 to 07 AUG 2025

LAREDO, TEXAS

AL-226 (FAA)

25219

WAAS CH 65841 W14A	APP CRS 142°	Rwy Ldg TDZE 508 Apt Elev 508
--	------------------------	---

RNAV (GPS) RWY 14

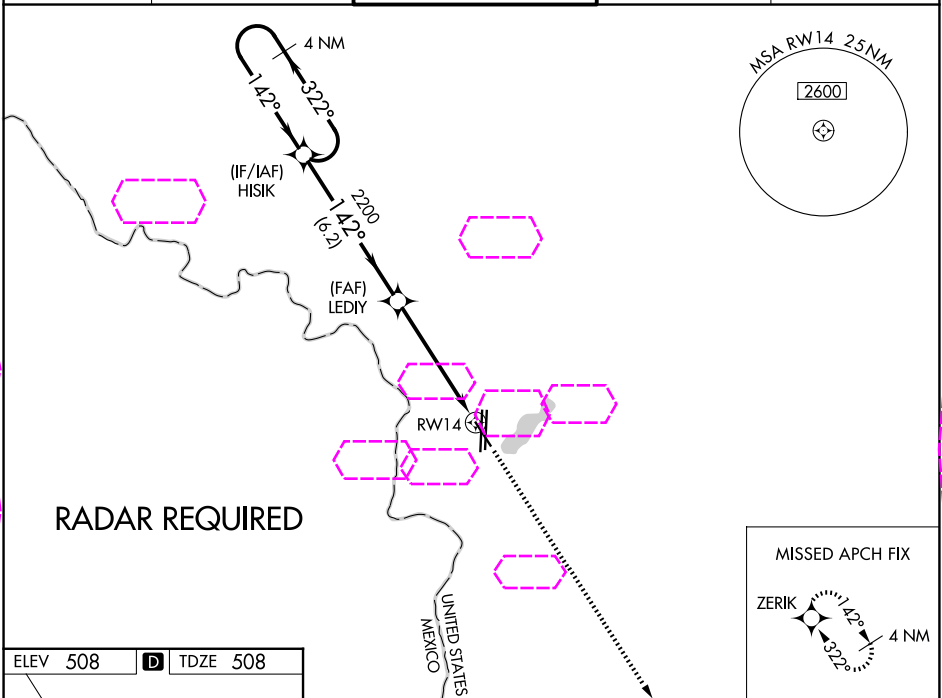
LAREDO INTL (L.R.D)

⚠ For uncompensated Baro-VNAV systems, LNAV/VNAV NA below 1°C (34°F) or above 54°C (130°F). Circling NA west of Rwy 14 and 36L.

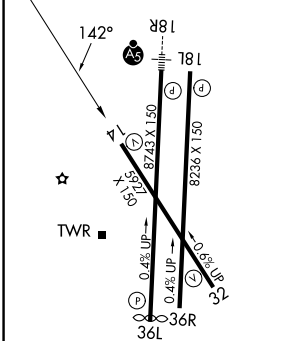
⚠ DME/DME RNP-0.3 NA.

MISSED APPROACH: Climb to 2500 direct ZERIK and hold.

ATIS 125.775	HOUSTON CENTER 127.8 307.2	LAREDO TOWER ★ 120.1(CTAF) 257.9	GND CON 121.8	UNICOM 122.95
------------------------	--------------------------------------	--	-------------------------	-------------------------



ELEV 508	D	TDZE 508
----------	----------	----------



MIRL Rwy 14-32
HIRL Rwy 18R-36L and 18L-36R

4 NM Holding Pattern		HISIK		LEDIY		2500 ZERIK	
3000 ← 322° → 142°		142°		2200		*1.3 NM to RW14	
GP 3.00° TCH 55		2200		6.2 NM		3.9 NM	
						1.3	
CATEGORY	A	B	C	D	E		
LPV DA	758-¾ 250 (300-¾)						
LNAV/ VNAV DA	810-⅞ 302 (400-⅞)						
LNAV MDA	960-1	452 (500-1)	960-1⅜		452 (500-1⅜)		
CIRCLING	960-1 452 (500-1)	980-1 472 (500-1)	1100-1½ 592 (600-1½)	1200-2¼ 692 (700-2¼)	1200-2½ 692 (700-2½)		

LAREDO, TEXAS
Amdt 1 01FEB18

27°33'N-99°28'W

RNAV (GPS) RWY 14