

LAREDO, TEXAS

AL-226 (FAA)

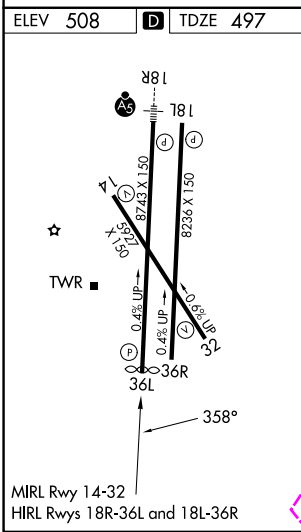
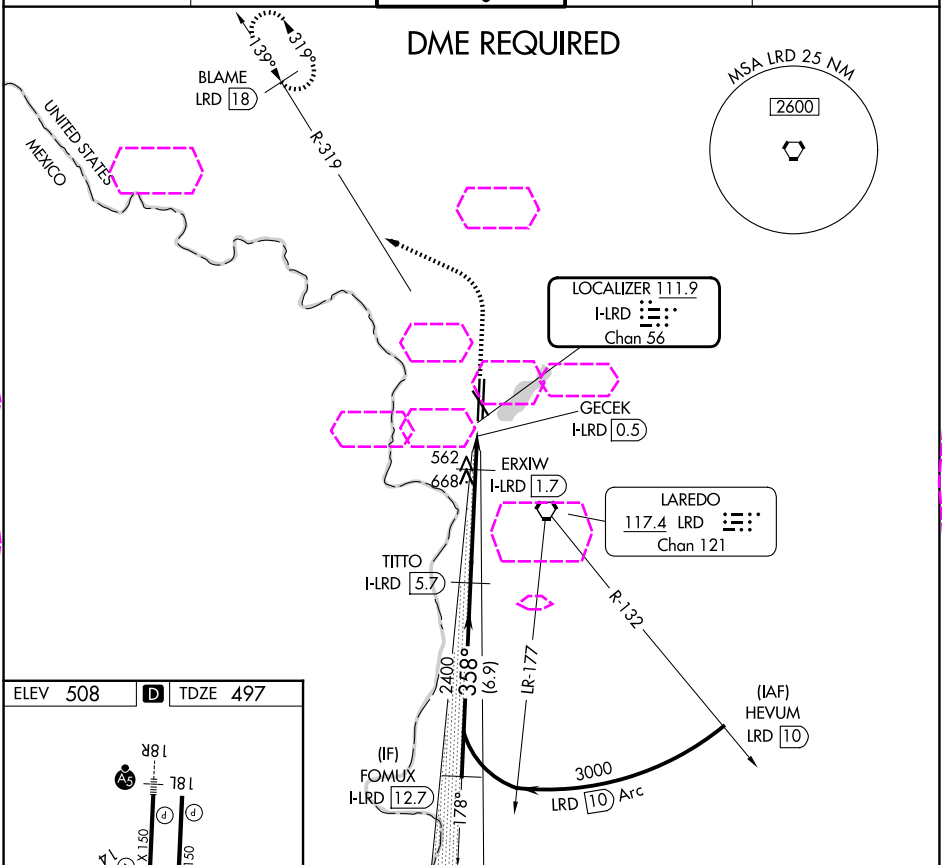
25219

LOC/DME I-LRD 111.9 Chan 56	APP CRS 358°	Rwy Ldg TDZE Apt Elev 8623 497 508
--	------------------------	--

LOC BC RWY 36L
LAREDO INTL (L.RD)

T Circling NA west of Rwy 14 and 36L.
A DME required. MISSED APPROACH: Climb to 1100 then climbing left turn to 2600 on heading 290° and on LRD VORTAC R-319 to BLAME/LRD 18 DME and hold.

ATIS 125.775	HOUSTON CENTER 127.8 307.2	LAREDO TOWER ★ 120.1(CTAF) 257.9	GND CON 121.8	UNICOM 122.95
------------------------	--------------------------------------	--	-------------------------	-------------------------



FOMUX I-LRD 12.7	Use I-LRD DME when on the localizer course.	1100 hdg 290°	2600	LRD R-319	BLAME LRD 18
3000	358°	TITTO I-LRD 5.7	2400	3.00° TCH 50	ERXIW I-LRD 1.7
Disregard glide slope indications.					
6.9 NM					
4.1 NM					
1.2 NM					
0.6					
CATEGORY	A	B	C	D	E
S-LOC 36L	820-1 323 (400-1)				
CIRCLING	940-1 432 (500-1)	980-1 472 (500-1)	1100-1½ 592 (600-1½)	1200-2¼ 692 (700-2¼)	1200-2½ 692 (700-2½)

LAREDO, TEXAS
Amdt 3 01FEB18

27°33'N-99°28'W

LAREDO INTL (L.RD)
LOC BC RWY 36L

SC-3, 07 AUG 2025 to 04 SEP 2025

SC-3, 07 AUG 2025 to 04 SEP 2025