

LAREDO, TEXAS

AL-226 (FAA)

25191

LOC/DME I-LRD	APP CRS	Rwy Ldg	18R	18L
111.9	178°	TDZE	8743	8236
Chan 56		Apt Elev	504	499
			508	508

# ILS or LOC RWY 18R

LAREDO INTL (LRD)

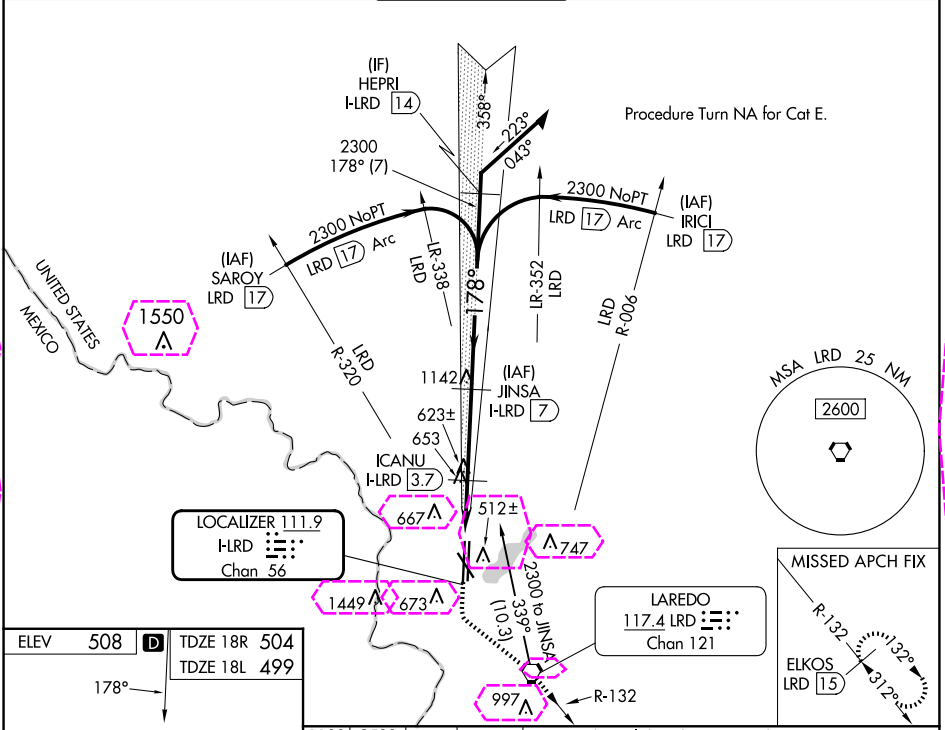
DME required.

**▼** Circling NA southwest of Rwy 14 and west of Rwy 36L.  
**▲** For inop ALS, increase S-ILS 18R Cat E visibility to  $\frac{3}{4}$  SM and increase S-LOC 18R Cat C, D, and E visibility to  $\frac{1}{2}$  SM.



MISSED APPROACH: Climb to 1100 then climbing left turn to 2500 direct LRD VORTAC and on LRD VORTAC R-132 to ELKOS/LRD 15 DME and hold.

ATIS	HOUSTON CENTER	LAREDO TOWER ★	GND CON	UNICOM
125.775	127.8 307.2	120.1(CTAF) 0 257.9	121.8	122.95



SC-3, 07 AUG 2025 to 04 SEP 2025