

WAAS CH <b>82118</b> <b>W06A</b>	APP CRS <b>058°</b>	Rwy Idg TDZE Apt Elev	<b>5002</b> <b>859</b> <b>861</b>
--	------------------------	-----------------------------	---

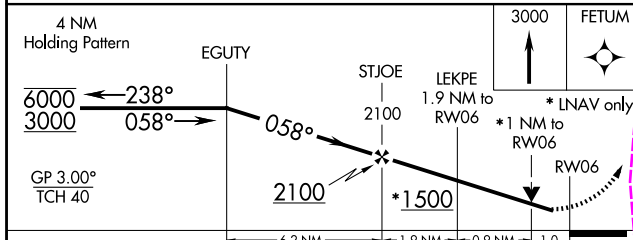
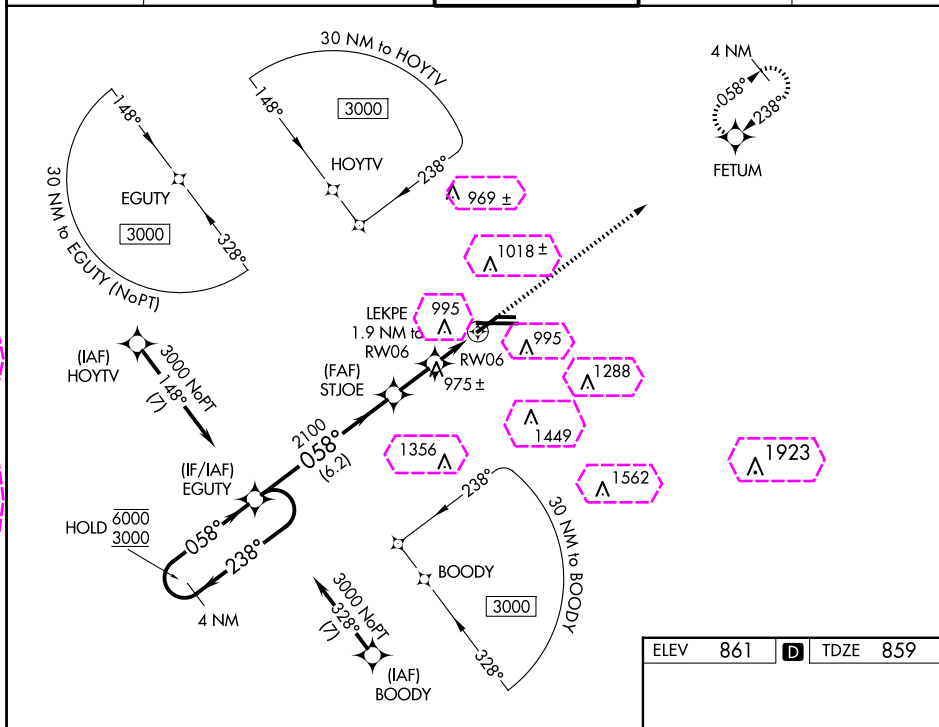
RNAV (GPS) RWY 6  
CAPITAL REGION INTL (LAN)


RNP APCH.

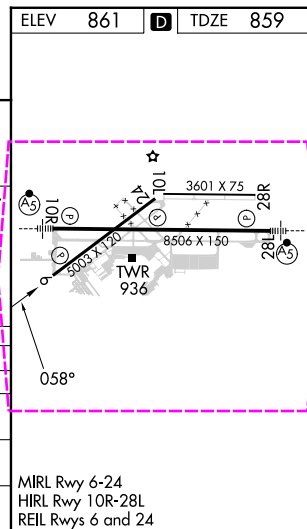
**T** Circling Rwy 10L, 28R NA at night. Rwy 6 helicopter visibility reduction below  $\frac{3}{4}$  SM NA.  
**A** For uncompensated Baro-VNAV systems. LNAV/VNAV NA below -21°C or above 54°C.

**MISSED APPROACH:**  
Climb to 3000 direct  
FETUM and hold.

ATIS 119.75	GREAT LAKES APP CON ★ 118.65 226.4	LANSING TOWER 119.9 240.9	GND CON 121.9	CLNC DEL 123.675
----------------	---------------------------------------	------------------------------	------------------	---------------------



CATEGORY		A	B	C	D
LPV	DA	1109-3/4		250 (300-3/4)	
LNAV/ VNAV	DA	1260-1 1/8		401 (400-1 1/8)	
LNAV	MDA	1220-1		361 (400-1)	
	CIRCLING	1320-1 459 (500-1)	1380-1 519 (600-1)	1600-2 739 (800-2)	1760-3 899 (900-3)



LANSING, MICHIGAN  
 Amdt 1 25FEB21

42°47'N - 84°35'W

CAPITAL REGION INTL (LAN)  
RNAV (GPS) RWY 6

EC-1, 10 JUL 2025 to 07 AUG 2025

LANSING, MICHIGAN

AL-224 (FAA)

25219

WAAS CH <b>82118</b> <b>W06A</b>	APP CRS <b>058°</b>	Rwy Ldg TDZE Apt Elev	<b>5002</b> <b>859</b> <b>861</b>
--	------------------------	-----------------------------	---

# RNAV (GPS) RWY 6

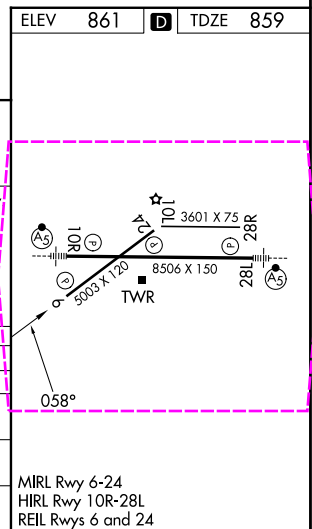
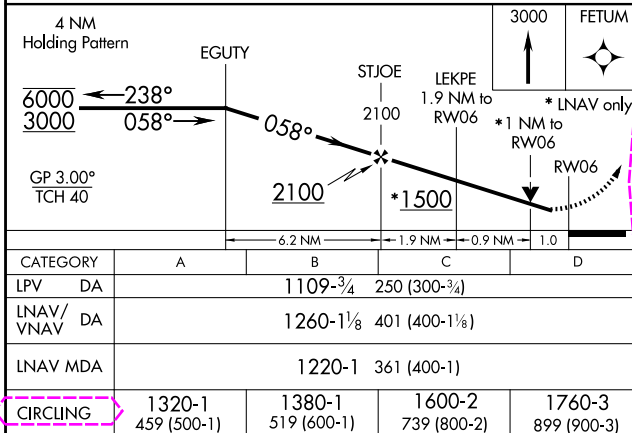
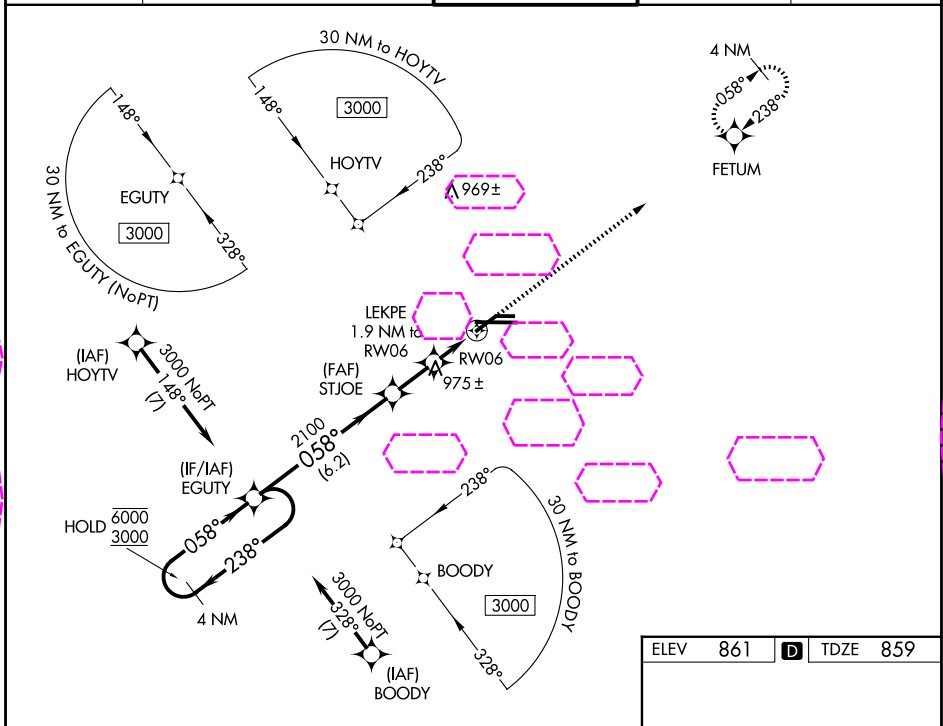
CAPITAL REGION INTL (LAN)

RNP APCH.

**⚠** Circling Rwy 10L, 28R NA at night. Rwy 6 helicopter visibility reduction below  $\frac{3}{4}$  SM NA.  
**⚠** For uncompensated Baro-VNAV systems, LNAV/VNAV NA below -21°C or above 54°C.

MISSED APPROACH:  
Climb to 3000 direct  
FETUM and hold.

ATIS <b>119.75</b>	GREAT LAKES APP CON ★ <b>118.65 226.4</b>	LANSING TOWER <b>119.9 240.9</b>	GND CON <b>121.9</b>	CLNC DEL <b>123.675</b>
-----------------------	--	-------------------------------------	-------------------------	----------------------------



CATEGORY	A	B	C	D
LPV DA		1109- $\frac{3}{4}$	250 (300- $\frac{3}{4}$ )	
LNAV/VNAV DA		1260-1 $\frac{1}{8}$	401 (400-1 $\frac{1}{8}$ )	
LNAV MDA		1220-1	361 (400-1)	
CIRCLING	1320-1 459 (500-1)	1380-1 519 (600-1)	1600-2 739 (800-2)	1760-3 899 (900-3)

LANSING, MICHIGAN  
Amdt 1 25FEB21

42°47'N - 84°35'W

CAPITAL REGION INTL (LAN)  
RNAV (GPS) RWY 6

EC-1, 07 AUG 2025 to 04 SEP 2025

EC-1, 07 AUG 2025 to 04 SEP 2025