

RNAV (GPS) RWY 28L  
CAPITAL REGION INTL (LAN)

CAPITAL REGION INTL (LAN)



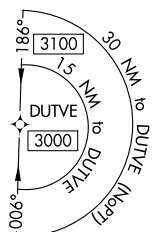
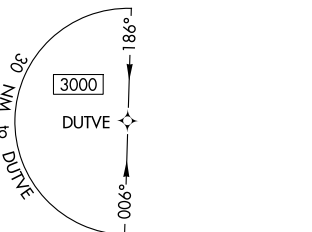
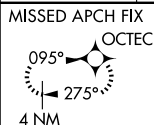
**MISSED APPROACH:** Climb to 3000 direct OCTEC and hold.

ATIS  
119.75

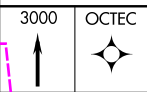
GREAT LAKES APP CON ★  
118.65 226.4

LANSING TOWER  
119.9 240.9

GND CON  
**121.9**

CLNC DEL  
123-675

ELEV	861	<b>D</b>	TDZE	852
------	-----	----------	------	-----



\*LNAV only.

DUTVE 4 NM Holding Pattern

GP 3.00°  
TCH 53

	1.3	3.4 NM	5.9 NM	
CATEGORY	A	B	C	D
LPV DA #	1052/24 200 (200-½)			
LNAV/ VNAV DA	1174/28 322 (400-⅝)			
LNAV MDA	1300/24 448 (500-½)		1300/45 448 (500-⅞)	
<b>CIRCLING</b>	1380-1 519 (600-1)		1600-2 739 (800-2)	1760-3 899 (900-3)

REIL Rwy 6 and 24  
HIRL Rwy 10R-28L  
MIRL Rwy 6-24

**C** CIRCULING

LANSING, MICHIGAN  
 Amdt 1A 07DEC17

42°47'N - 84°35'W

CAPITAL REGION INTL (LAN)

RNAV (GPS) RWY 28L

EC-1, 10 JUL 2025 to 07 AUG 2025

EC-1, 10 JUL 2025 to 07 AUG 2025

LANSING, MICHIGAN

AL-224 (FAA)

25219

WAAS CH <b>40414</b> <b>W28A</b>	APP CRS <b>276°</b>	Rwy Ldg TDZE <b>852</b> Apt Elev <b>861</b>
----------------------------------------	------------------------	---------------------------------------------------

# RNAV (GPS) RWY 28L

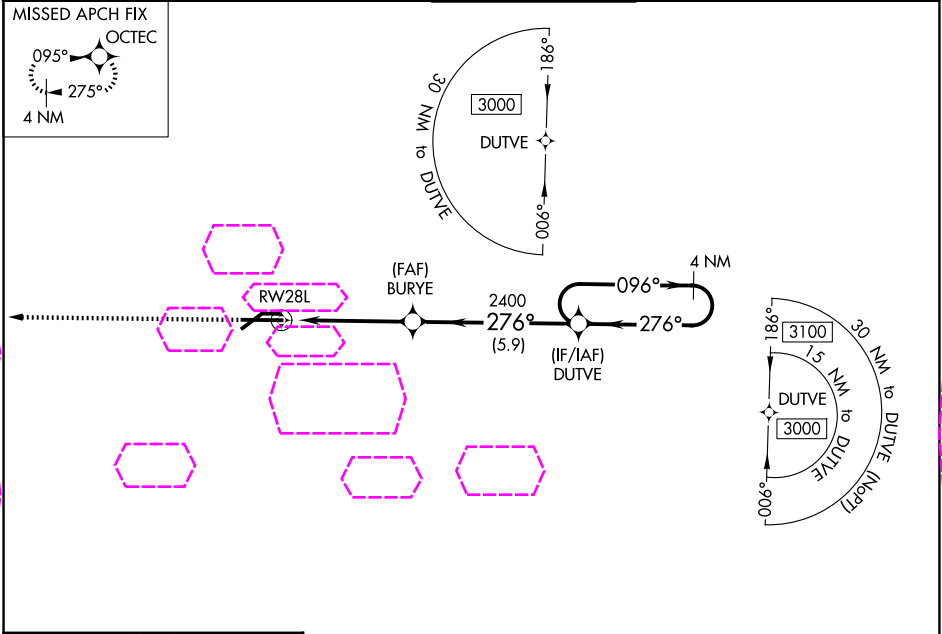
CAPITAL REGION INTL (L.A.N)

For uncompensated Baro-VNAV systems, LNAV/VNAV NA below -19°C (-2°F) or above 54°C (130°F). DME/DME RNP-0.3 NA. Circling Rwy 10L, 28R NA at night.  
# RVR 1800 authorized with use of FD or AP or HUD to DA.

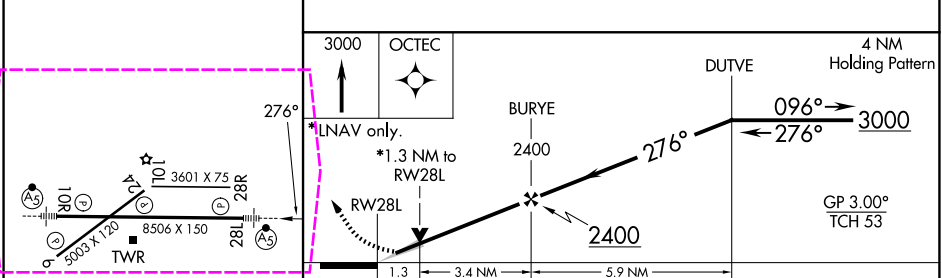
MALSR

MISSED APPROACH: Climb to 3000 direct OCTEC and hold.

ATIS <b>119.75</b>	GREAT LAKES APP CON ★ <b>118.65 226.4</b>	LANSING TOWER <b>119.9 240.9</b>	GND CON <b>121.9</b>	CLNC DEL <b>123.675</b>
-----------------------	----------------------------------------------	-------------------------------------	-------------------------	----------------------------



ELEV 861	<b>D</b>	TDZE 852
----------	----------	----------



CATEGORY	A	B	C	D
LPV DA #	1052/24 200 (200-½)			
LNAV/VNAV DA	1174/28 322 (400-¾)			
LNAV MDA	1300/24	448 (500-½)	1300/45	448 (500-¾)
<b>CIRCLING</b>	1380-1	519 (600-1)	1600-2 739 (800-2)	1760-3 899 (900-3)

LANSING, MICHIGAN  
Amdt 1A 07DEC17

42°47'N - 84°35'W

# CAPITAL REGION INTL (L.A.N)

## RNAV (GPS) RWY 28L

EC-1, 07 AUG 2025 to 04 SEP 2025

EC-1, 07 AUG 2025 to 04 SEP 2025