

LANSING, MICHIGAN

AL-224 (FAA)

24081

WAAS CH 50413 W24A	APP CRS 238°	Rwy Idg TDZE Apt Elev	5002 857 861
--	------------------------	-----------------------------	---

RNAV (GPS) RWY 24

CAPITAL REGION INTL (L.AN)

RNP APCH.

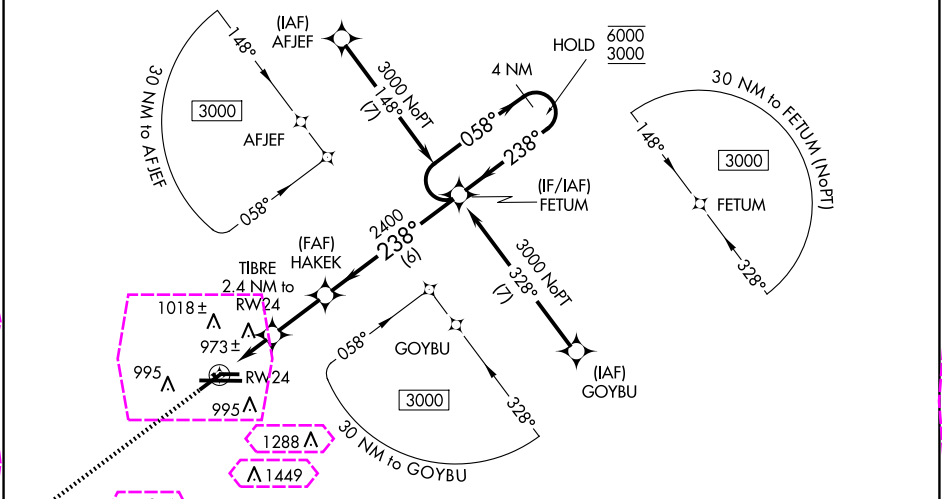
⚠

⚠

Circling Rwy 10L, 28R NA at night. Rwy 24 helicopter visibility reduction below $\frac{3}{4}$ SM NA.
For uncompensated Baro-VNAV systems, LNAV/VNAV NA below -22°C or above 54°C.

MISSED APPROACH: Climb to 3000 direct EGUTY and hold.

ATIS 119.75	GREAT LAKES APP CON ★ 118.65 226.4	LANSING TOWER 119.9 240.9	GND CON 121.9	CLNC DEL 123.675
-----------------------	--	-------------------------------------	-------------------------	----------------------------



ELEV 861 **D** TDZE 857

MISSED APCH FIX
EGUTY

3000

EGUTY

* LNAV only

* 1.1 NM to RW24

TIBRE 2.4 NM to RW24

HAKEK 2400

FETUM

1640

2400

GP 3.00°

TCH 42

CATEGORY	A	B	C	D
LPV	DA	1162-7/8	305 (400-7/8)	
LNAV/VNAV	DA	1286-1 1/4	429 (500-1 1/4)	
LNAV MDA	1240-1	383 (400-1)	1240-1 1/8	383 (400-1 1/8)
CIRCLING	1320-1 459 (500-1)	1380-1 519 (600-1)	1600-2 739 (800-2)	1760-3 899 (900-3)

LANSING, MICHIGAN

AL-224 (FAA)

25219

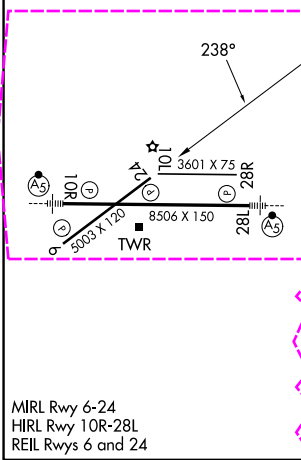
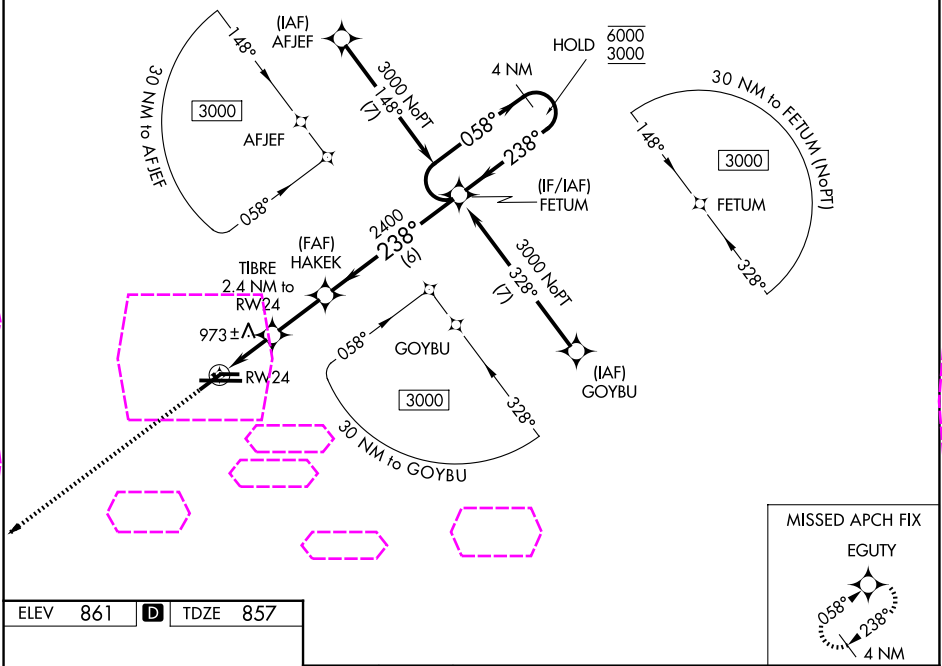
WAAS CH 50413 W24A	APP CRS 238°	Rwy Ldg TDZE Apt Elev	5002 857 861
--	------------------------	-----------------------------	---

RNAV (GPS) RWY 24

CAPITAL REGION INTL (LAN)

RNP APCH.	MISSED APPROACH: Climb to 3000 direct EGUTY and hold.
Circling Rwy 10L, 28R NA at night. Rwy 24 helicopter visibility reduction below $\frac{3}{4}$ SM NA. For uncompensated Baro-VNAV systems, LNAV/VNAV NA below -22°C or above 54°C.	

ATIS 119.75	GREAT LAKES APP CON ★ 118.65 226.4	LANSING TOWER 119.9 240.9	GND CON 121.9	CLNC DEL 123.675
-----------------------	--	-------------------------------------	-------------------------	----------------------------



3000

↑

EGUTY

✧

4 NM

Holding Pattern

FETUM

058° → 6000

← 238° 3000

HAKEK

2400

238°

2400

TIBRE

2.4 NM to RW24

*1.1 NM to RW24

*1640

RW24

1.1

1.3 NM

2.4 NM

6 NM

GP 3.00°

TCH 42

CATEGORY	A	B	C	D
LPV DA	1162-7⁄8		305 (400-7⁄8)	
LNAV/VNAV DA	1286-1¼		429 (500-1¼)	
LNAV MDA	1240-1	383 (400-1)	1240-1⅛	383 (400-1⅛)
CIRCLING	1320-1 459 (500-1)	1380-1 519 (600-1)	1600-2 739 (800-2)	1760-3 899 (900-3)

LANSING, MICHIGAN
Amdt 1 25FEB21

42°47'N-84°35'W

RNAV (GPS) RWY 24