

LANSING, MICHIGAN

AL-224 (FAA)

25219

| | | |
|--|------------------------|---|
| WAAS CH 61314 W10A | APP CRS 096° | Rwy Ldg TDZE 861 Apt Elev 861 |
|--|------------------------|---|

RNAV (GPS) RWY 10R

CAPITAL REGION INTL (LAN)

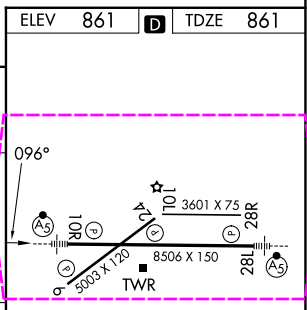
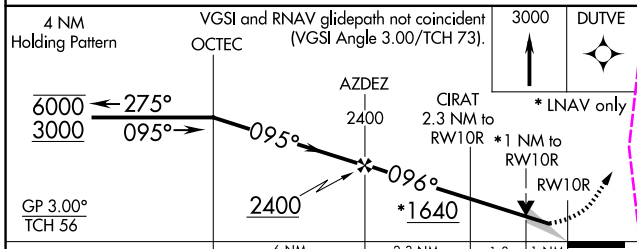
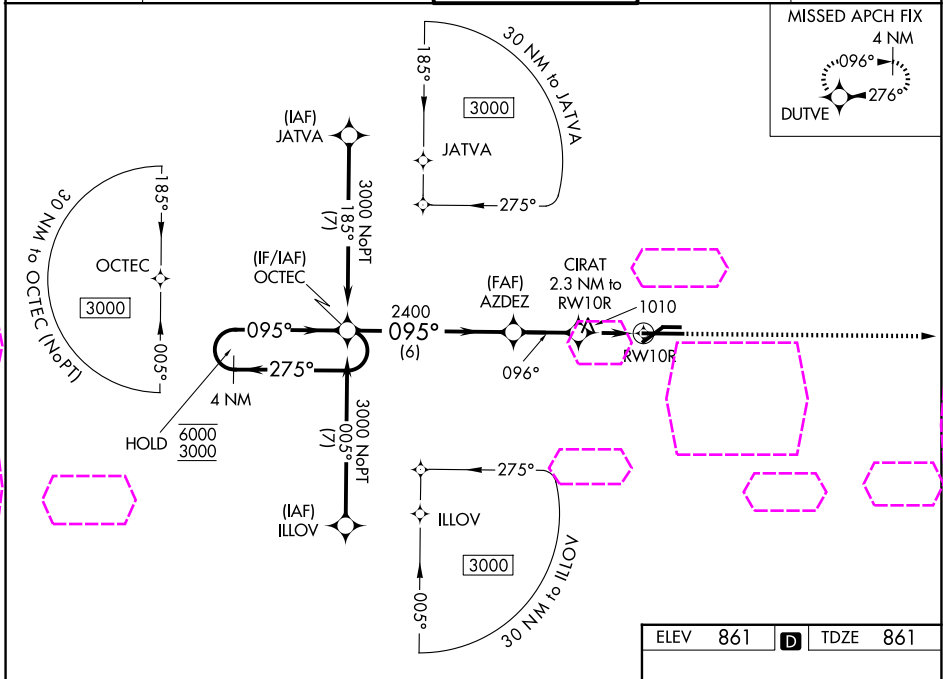
⚠ Circling Rwy 10L, 28R NA at night. For uncompensated Baro-VNAV systems, LNAV/VNAV NA below -19°C or above 54°C. For inop ALS, increase LNAV/VNAV all Cats visibility to RVR 4500. ** RVR 1800 authorized with use of FD or AP or HUD to DA.

⚠ RNP APCH.

MALSR

MISSED APPROACH:
Climb to 3000 direct DUTVE and hold.

| | | | | |
|-----------------------|--|-------------------------------------|-------------------------|----------------------------|
| ATIS 119.75 | GREAT LAKES APP CON ★ 118.65 226.4 | LANSING TOWER 119.9 240.9 | GND CON 121.9 | CLNC DEL 123.675 |
|-----------------------|--|-------------------------------------|-------------------------|----------------------------|



| CATEGORY | A | B | C | D |
|-----------------|-----------------------|-----------------------|-----------------------|-----------------------|
| LPV DA ** | 1061/24 | | 200 (200-½) | |
| LNAV/VNAV DA | 1172/24 | | 311 (400-½) | |
| LNAV MDA | 1260/24 | | 1260/35 | 399 (400-¾) |
| CIRCLING | 1320-1 459 (600-1) | 1380-1 519 (600-1) | 1600-2 739 (800-2) | 1760-3 899 (900-3) |

LANSING, MICHIGAN
Amdt 1 25FEB21

42°47'N-84°35'W

RNAV (GPS) RWY 10R

MIRL Rwy 6-24
HIRL Rwy 10R-28L
REIL Rwy 6 and 24

EC-1, 07 AUG 2025 to 04 SEP 2025

EC-1, 07 AUG 2025 to 04 SEP 2025