

LANSING, MICHIGAN

AL-224 (FAA)

24081

LOC/DME I-LAN <b>110.1</b> Chan <b>38</b>	APP CRS <b>276°</b>	Rwy Idg TDZE <b>852</b> Apt Elev <b>861</b>
---	------------------------	---

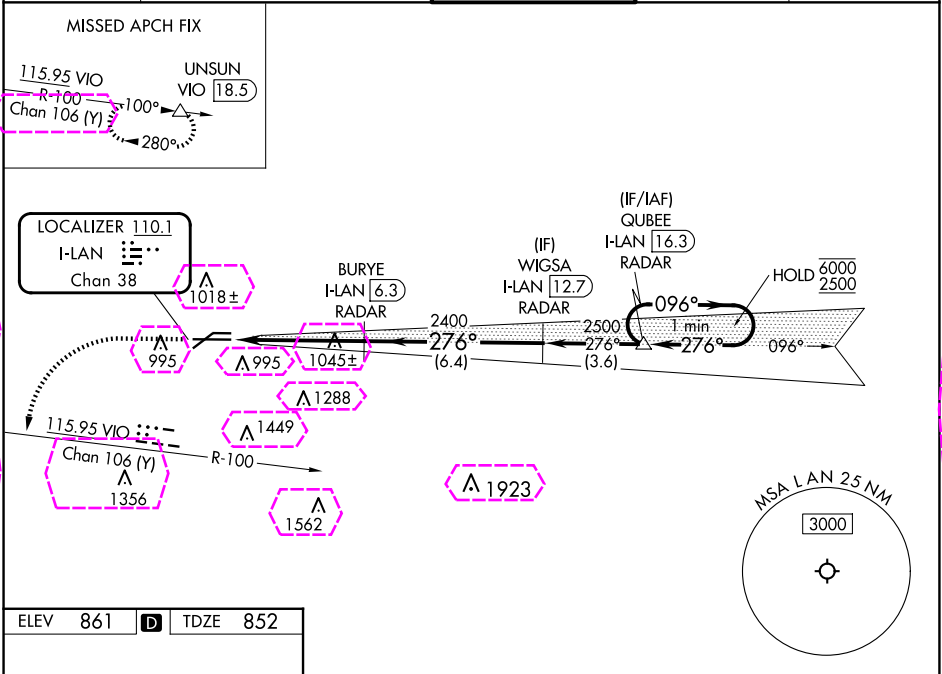
ILS or LOC RWY 28L  
CAPITAL REGION INTL (LAN)

DME required. RADAR required for procedure entry.

MALSR

MISSED APPROACH: Climb to 2500 then climbing left turn to 3000 on VIO VOR/DME R-100 to UNSUN/VIO 18.5 DME and hold.

ATIS <b>119.75</b>	GREAT LAKES APP CON * <b>118.65 226.4</b>	LANSING TOWER <b>119.9 240.9</b>	GND CON <b>121.9</b>	CLNC DEL <b>123.675</b>
-----------------------	--	-------------------------------------	-------------------------	----------------------------



ELEV 861 TDZE 852

REIL Rwy 6 and 24  
HIRL Rwy 10R-28L  
MIRL Rwy 6-24  
FAF to MAP 4.7 NM

Knots	60	90	120	150	180
Min:Sec	4:42	3:08	2:21	1:53	1:34

276°

2500 3000

VIO R-100

UNSUB

WIGSA I-LAN 12.7 RADAR

QUBEE I-LAN 16.3 RADAR

BURYS I-LAN 6.3 RADAR

I-LAN 2.8

I-LAN 1.6

2400

276°

096°

6000

2500

GS 3.00°

TCH 53

1.3 3.4 NM 6.4 NM 3.6 NM

CATEGORY	A	B	C	D
S-ILS 28L*	1052/24 200 (200-½)			
S-LOC 28L	1300/24 448 (500-½)		1300/45 448 (500-¾)	
<b>CIRCLING</b>	1380-1 519 (600-1)		1600-2 739 (800-2) 1760-3 899 (900-3)	

LANSING, MICHIGAN  
Amdt 28B 25JAN24

42°47'N-84°35'W

CAPITAL REGION INTL (LAN)  
ILS or LOC RWY 28L

EC-1, 10 JUL 2025 to 07 AUG 2025

EC-1, 10 JUL 2025 to 07 AUG 2025

LANSING, MICHIGAN

AL-224 (FAA)

25219

LOC/DME I-LAN <b>110.1</b> Chan <b>38</b>	APP CRS <b>276°</b>	Rwy Ldg TDZE <b>852</b> Apt Elev <b>861</b>
---	------------------------	---

# **ILS or LOC RWY 28L** CAPITAL REGION INTL (LAN)

DME required. RADAR required for procedure entry.

Circling Rwy 10L, 28R NA at night.  
 \* RVR 1800 authorized with use of FD or AP or HUD to DA.

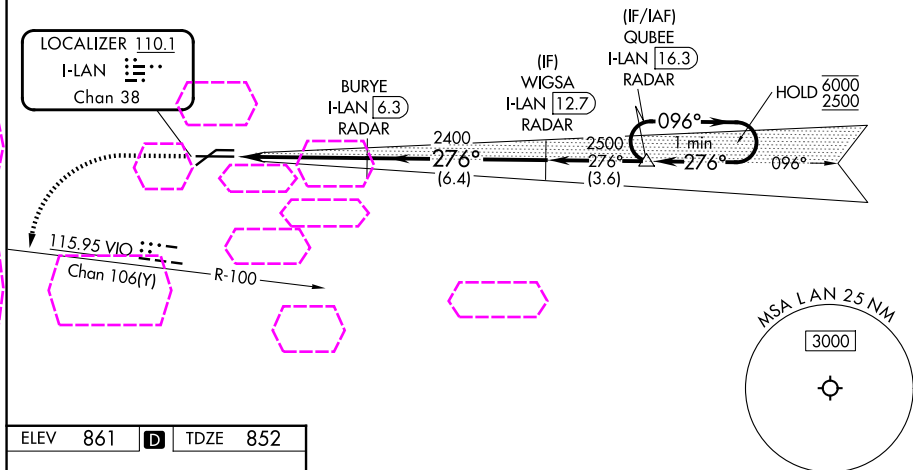
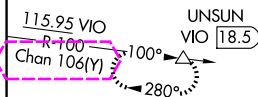
MALSR



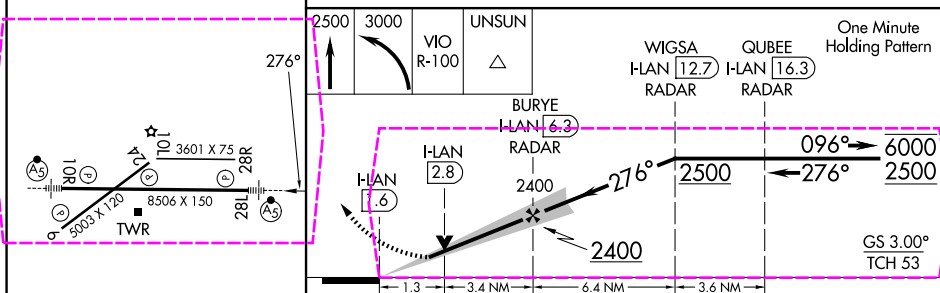
**MISSED APPROACH:** Climb to 2500 then  
 climbing left turn to 3000 on VIO VOR/DME  
 R-100 to UNSUN/VIO 18.5 DME and hold.

ATIS <b>119.75</b>	GREAT LAKES APP CON ★ <b>118.65 226.4</b>	LANSING TOWER <b>119.9 240.9</b>	GND CON <b>121.9</b>	CLNC DEL <b>123.675</b>
-----------------------	--	-------------------------------------	-------------------------	----------------------------

## MISSED APCH FIX



ELEV 861	<b>D</b>	TDZE 852
----------	----------	----------



REIL Rwy 6 and 24  
 HIRL Rwy 10R-28L  
 MIRL Rwy 6-24

FAF to MAP 4.7 NM

Knots	60	90	120	150	180
Min:Sec	4:42	3:08	2:21	1:53	1:34

CATEGORY	A	B	C	D
S-ILS 28L*	1052/24 200 (200-½)			
S-LOC 28L	1300/24 448 (500-½)	1300/45 448 (500-¾)		
CIRCLING	1380-1 519 (600-1)	1600-2 739 (800-2)	1760-3 899 (900-3)	

LANSING, MICHIGAN

Amdt 28B 25JAN24

42°47'N-84°35'W

CAPITAL REGION INTL (LAN)  
**ILS or LOC RWY 28L**

EC-1, 07 AUG 2025 to 04 SEP 2025