

LANSING, MICHIGAN

AL-224 (FAA)

24305

LOC I-CPQ <b>111.7</b>	APP CRS <b>096°</b>	Rwy Idg <b>8506</b> TDZE <b>861</b> Apt Elev <b>861</b>
---------------------------	------------------------	---

# ILS or LOC RWY 10R

CAPITAL REGION INTL (LAN)

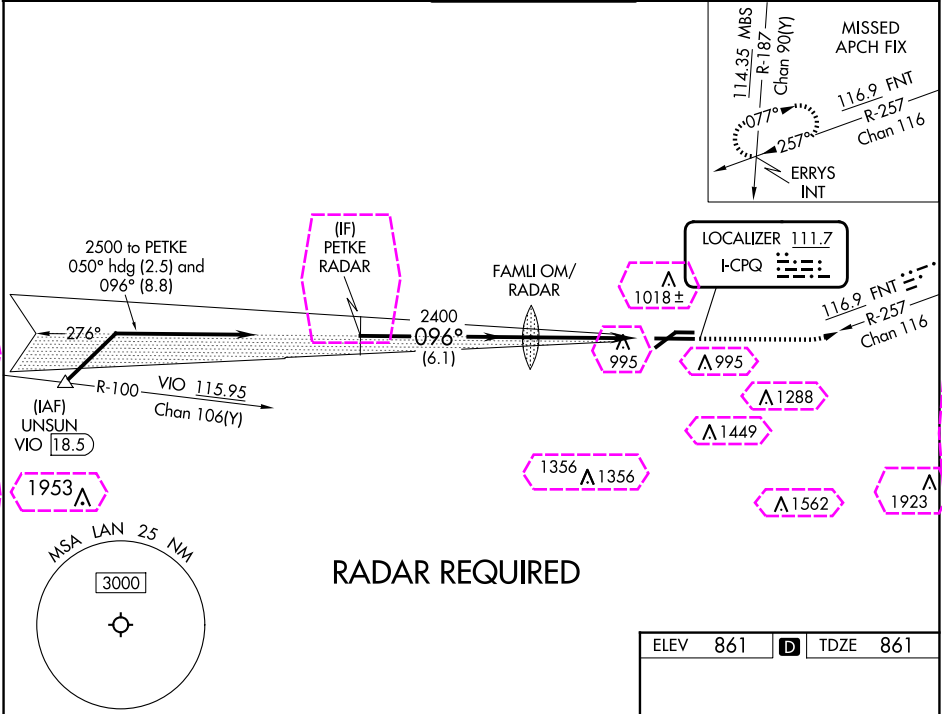
**⚠**  
**A**

Circling Rwy 10L, 28R NA at night.  
\*\* RVR 1800 authorized with use of  
FD or AP or HUD to DA.

**MALSR**

MISSED APPROACH: Climb to 2000 then  
climbing left turn to 2700 on heading 070° and  
on FNT VORTAC R-257 to ERRYS INT and hold.

ATIS <b>119.75</b>	GREAT LAKES APP CON ★ <b>118.65 226.4</b>	LANSING TOWER <b>119.9 240.9</b>	GND CON <b>121.9</b>	CLNC DEL <b>123.675</b>
-----------------------	--	-------------------------------------	-------------------------	----------------------------



**VGSI and ILS glidepath not coincident**  
(VGSI Angle 3.00/TCH 73).

**PETKE RADAR**

**2000**  
↑  
**2700**  
hdg 070°

**FNT R-257**

**ERRYS INT**

**2500**

**096°**

**2367**

**2400**

**6.1 NM**

**4.5 NM**

**GS 3.00°**  
**TCH 56**

**2500**

**096°**

**2367**

**2400**

**6.1 NM**

**4.5 NM**

CATEGORY	A	B	C	D
S-ILS 10R**	1061/24 200 (200-½)			
S-LOC 10R	1340/24 479 (500-½)	1340/50 479 (500-1)		
<b>C CIRCLING</b>	1380-1 519 (600-1)	1600-2 739 (800-2)	1760-3 899 (900-3)	

**ELEV 861** **D** **TDZE 861**

**REIL Rwy 6 and 24**  
**HIRL Rwy 10R-28L**  
**MIRL Rwy 6-24**  
**FAF to MAP 4.5 NM**

Knots	60	90	120	150	180
Min:Sec	4:30	3:00	2:15	1:48	1:30

LANSING, MICHIGAN  
Amdt 11B 01FEB18

42°47'N-84°35'W

CAPITAL REGION INTL (LAN)  
ILS or LOC RWY 10R

LANSING, MICHIGAN

AL-224 (FAA)

25219

LOC I-CPQ <b>111.7</b>	APP CRS <b>096°</b>	Rwy Ldg TDZE <b>861</b> Apt Elev <b>861</b>
---------------------------	------------------------	---

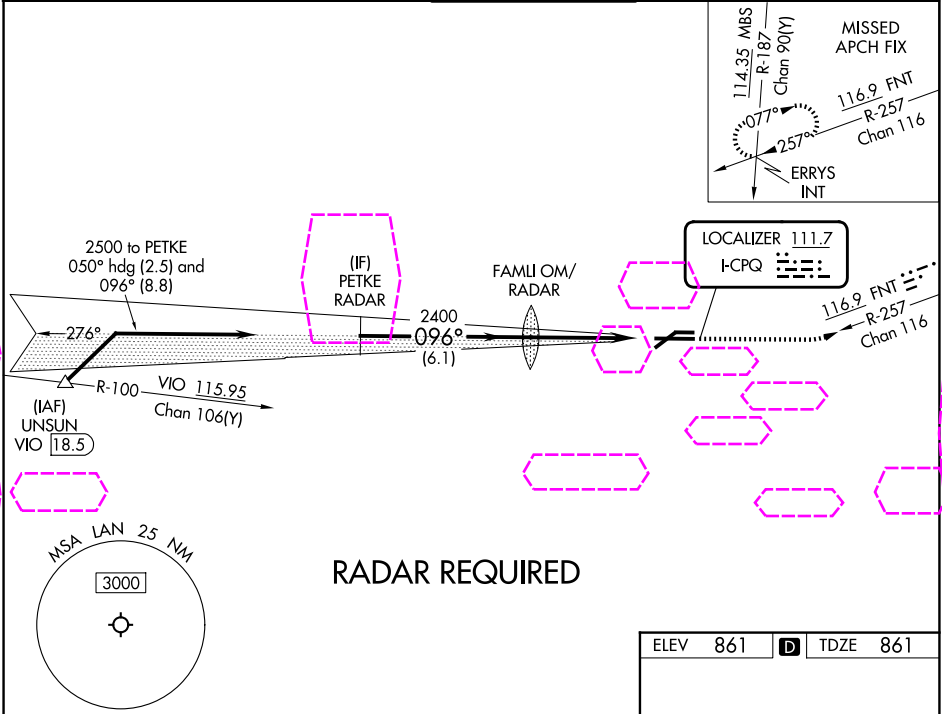
ILS or LOC RWY 10R  
CAPITAL REGION INTL (LAN)

Circling Rwy 10L, 28R NA at night.  
\*\* RVR 1800 authorized with use of  
FD or AP or HUD to DA.

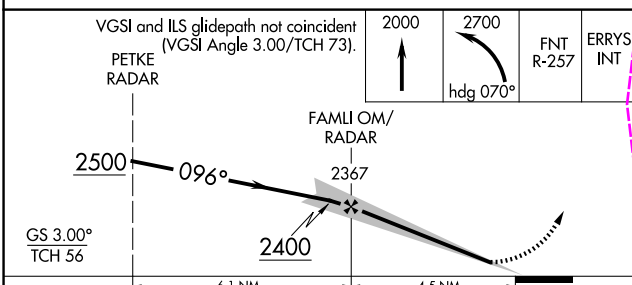
MALS R

MISSED APPROACH: Climb to 2000 then  
climbing left turn to 2700 on heading 070° and  
on FNT VORTAC R-257 to ERRYS INT and hold.

ATIS <b>119.75</b>	GREAT LAKES APP CON ★ <b>118.65 226.4</b>	LANSING TOWER <b>119.9 240.9</b>	GND CON <b>121.9</b>	CLNC DEL <b>123.675</b>
-----------------------	--	-------------------------------------	-------------------------	----------------------------



RADAR REQUIRED



ELEV 861		TDZE 861
----------	--	----------

REIL Rwy 6 and 24	HIRL Rwy 10R-28L	MIRL Rwy 6-24
FAF to MAP 4.5 NM		
Knots	60	90 120 150 180
Min:Sec	4:30	3:00 2:15 1:48 1:30

LANSING, MICHIGAN  
Amdt 11B 01FEB18

42°47'N-84°35'W

CAPITAL REGION INTL (LAN)  
ILS or LOC RWY 10R

EC-1, 07 AUG 2025 to 04 SEP 2025

EC-1, 07 AUG 2025 to 04 SEP 2025