

KNOXVILLE, TENNESSEE

AL-218 (FAA)

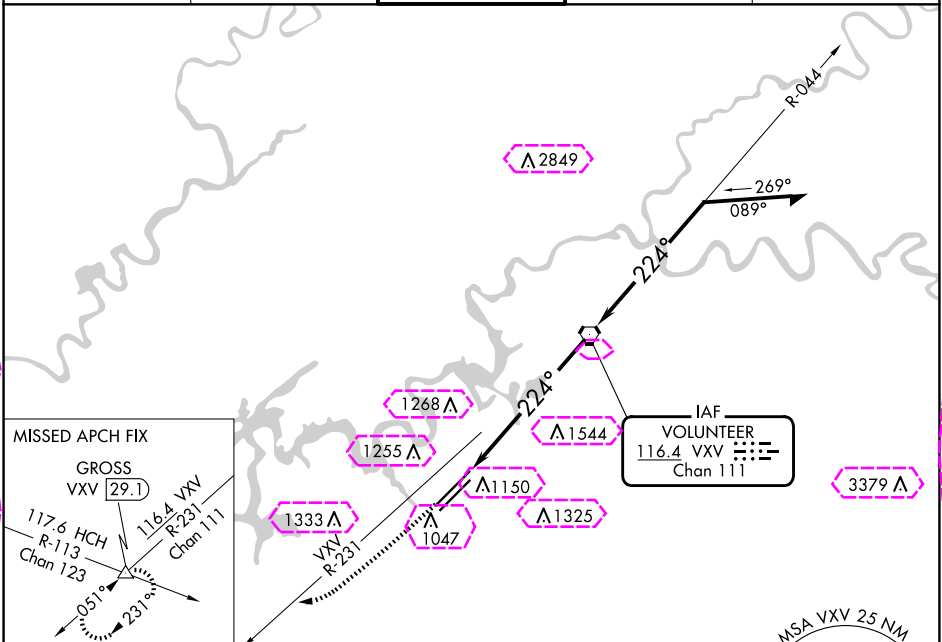
24249

VOR/DME VXV <b>116.4</b> Chan <b>111</b>	APP CRS <b>224°</b>	Rwy Idg <b>9495</b> TDZE <b>984</b> Apt Elev <b>986</b>
--	------------------------	---

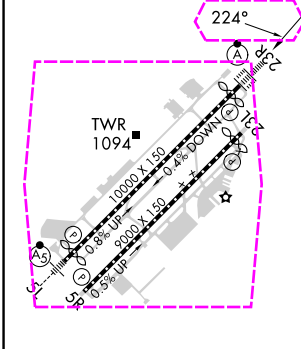
VOR RWY 23R  
MC GHEE TYSON (TYS)

MISSED APPROACH: Climb to 3000 on VXV  
VORTAC R-231 to GROSS INT/29.1 DME  
and hold.

ATIS <b>128.35</b>	KNOXVILLE APP CON <b>123.9 360.8</b>	KNOXVILLE TOWER <b>121.2 257.8</b>	GND CON <b>121.9 348.6</b>	CLNC DEL <b>121.65</b>
-----------------------	---	---------------------------------------	-------------------------------	---------------------------



ELEV <b>986</b>	<b>D</b>	TDZE <b>984</b>
-----------------	----------	-----------------



HIRL Rwys 5L-23R and 5R-23L REIL Rwys 5R and 23L TDZ/CL Rwys 5R and 23R FAF to MAP 6.6 NM					
Knots	60	90	120	150	180
Min:Sec	6:36	4:24	3:18	2:38	2:12

3000

VXV R-231

GROSS  $\Delta$

VXV 6.6

VXV 4.7

$\leq 3.08^\circ$   
TCH 56

VXV VORTAC

Remain within 10 NM

044°

224°

4000

3200

CATEGORY	A	B	C	D
S-23R	1640/24 656 (700-1/2)	1640-1 654 (700-1)	1660-2 674 (700-2)	1900-3 914 (1000-3)

KNOXVILLE, TENNESSEE  
Amdt 8 12AUG21

35°49'N-84°00'W

MC GHEE TYSON (TYS)  
VOR RWY 23R

KNOXVILLE, TENNESSEE

AL-218 (FAA)

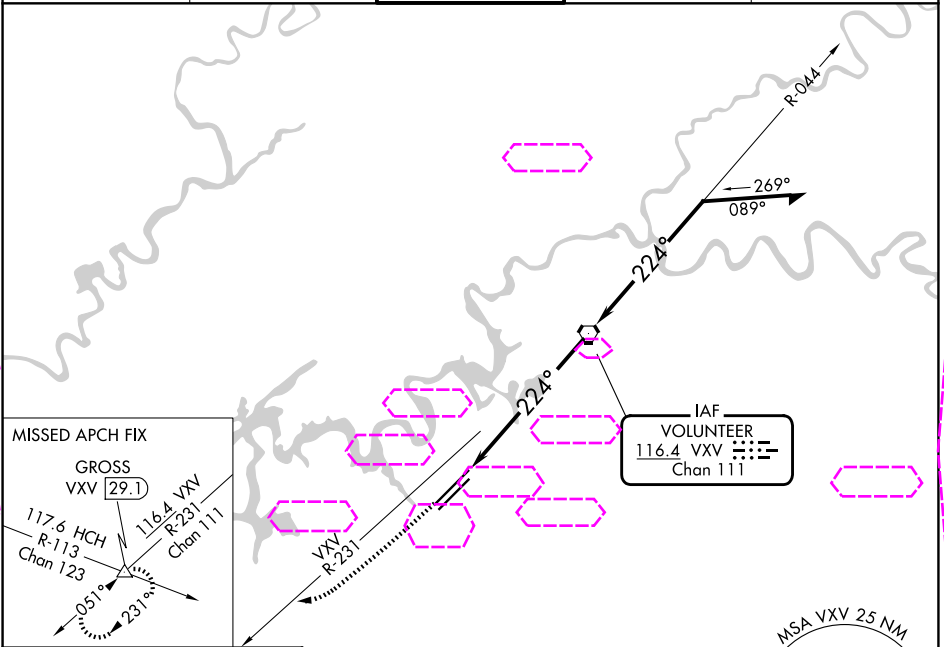
25219

VOR/DME VXV <b>116.4</b> Chan <b>111</b>	APP CRS <b>224°</b>	Rwy Ldg TDZE Apt Elev	<b>9495</b> <b>984</b> <b>986</b>
--	------------------------	-----------------------------	---

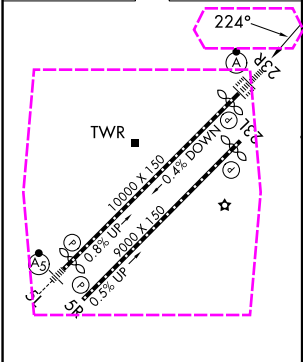
VOR RWY 23R  
MC GHEE TYSON (TYS)

	ALSF-2	MISSED APPROACH: Climb to 3000 on VXV VORTAC R-231 to GROSS INT/29.1 DME and hold.
--	--------	--

ATIS <b>128.35</b>	KNOXVILLE APP CON <b>123.9 360.8</b>	KNOXVILLE TOWER <b>121.2 257.8</b>	GND CON <b>121.9 348.6</b>	CLNC DEL <b>121.65</b>
-----------------------	---	---------------------------------------	-------------------------------	---------------------------



ELEV <b>986</b>	<b>D</b>	TDZE <b>984</b>
-----------------	----------	-----------------



HIRL Rwy 5L-23R and 5R-23L REIL Rwy 5R and 23L TDZ/CL Rwy 5R and 23R FAF to MAP 6.6 NM					
Knots	60	90	120	150	180
Min:Sec	6:36	4:24	3:18	2:38	2:12

3000 ↑		VXV R-231	GROSS △	VXV VORTAC		Remain within 10 NM	
3000		VXV R-231	GROSS △	VXV VORTAC		Remain within 10 NM	
3000		VXV R-231	GROSS △	VXV VORTAC		Remain within 10 NM	
3000		VXV R-231	GROSS △	VXV VORTAC		Remain within 10 NM	
3000		VXV R-231	GROSS △	VXV VORTAC		Remain within 10 NM	
3000		VXV R-231	GROSS △	VXV VORTAC		Remain within 10 NM	
3000		VXV R-231	GROSS △	VXV VORTAC		Remain within 10 NM	
3000		VXV R-231	GROSS △	VXV VORTAC		Remain within 10 NM	
3000		VXV R-231	GROSS △	VXV VORTAC		Remain within 10 NM	
3000		VXV R-231	GROSS △	VXV VORTAC		Remain within 10 NM	
3000		VXV R-231	GROSS △	VXV VORTAC		Remain within 10 NM	
3000		VXV R-231	GROSS △	VXV VORTAC		Remain within 10 NM	
3000		VXV R-231	GROSS △	VXV VORTAC		Remain within 10 NM	
3000		VXV R-231	GROSS △	VXV VORTAC		Remain within 10 NM	
3000		VXV R-231	GROSS △	VXV VORTAC		Remain within 10 NM	
3000		VXV R-231	GROSS △	VXV VORTAC		Remain within 10 NM	
3000		VXV R-231	GROSS △	VXV VORTAC		Remain within 10 NM	
3000		VXV R-231	GROSS △	VXV VORTAC		Remain within 10 NM	
3000		VXV R-231	GROSS △	VXV VORTAC		Remain within 10 NM	
3000		VXV R-231	GROSS △	VXV VORTAC		Remain within 10 NM	
3000		VXV R-231	GROSS △	VXV VORTAC		Remain within 10 NM	
3000		VXV R-231	GROSS △	VXV VORTAC		Remain within 10 NM	
3000		VXV R-231	GROSS △	VXV VORTAC		Remain within 10 NM	
3000		VXV R-231	GROSS △	VXV VORTAC		Remain within 10 NM	
3000		VXV R-231	GROSS △	VXV VORTAC		Remain within 10 NM	
3000		VXV R-231	GROSS △	VXV VORTAC		Remain within 10 NM	
3000		VXV R-231	GROSS △	VXV VORTAC		Remain within 10 NM	
3000		VXV R-231	GROSS △	VXV VORTAC		Remain within 10 NM	
3000		VXV R-231	GROSS △	VXV VORTAC		Remain within 10 NM	
3000		VXV R-231	GROSS △	VXV VORTAC		Remain within 10 NM	
3000		VXV R-231	GROSS △	VXV VORTAC		Remain within 10 NM	
3000		VXV R-231	GROSS △	VXV VORTAC		Remain within 10 NM	
3000		VXV R-231	GROSS △	VXV VORTAC		Remain within 10 NM	
3000		VXV R-231	GROSS △	VXV VORTAC		Remain within 10 NM	
3000		VXV R-231	GROSS △	VXV VORTAC		Remain within 10 NM	
3000		VXV R-231	GROSS △	VXV VORTAC		Remain within 10 NM	
3000		VXV R-231	GROSS △	VXV VORTAC		Remain within 10 NM	
3000		VXV R-231	GROSS △	VXV VORTAC		Remain within 10 NM	
3000		VXV R-231	GROSS △	VXV VORTAC		Remain within 10 NM	
3000		VXV R-231	GROSS △	VXV VORTAC		Remain within 10 NM	
3000		VXV R-231	GROSS △	VXV VORTAC		Remain within 10 NM	
3000		VXV R-231	GROSS △	VXV VORTAC		Remain within 10 NM	
3000		VXV R-231	GROSS △	VXV VORTAC		Remain within 10 NM	
3000		VXV R-231	GROSS △	VXV VORTAC		Remain within 10 NM	
3000		VXV R-231	GROSS △	VXV VORTAC		Remain within 10 NM	
3000		VXV R-231	GROSS △	VXV VORTAC		Remain within 10 NM	
3000		VXV R-231	GROSS △	VXV VORTAC		Remain within 10 NM	
3000		VXV R-231	GROSS △	VXV VORTAC		Remain within 10 NM	
3000		VXV R-231	GROSS △	VXV VORTAC		Remain within 10 NM	
3000		VXV R-231	GROSS △	VXV VORTAC		Remain within 10 NM	
3000		VXV R-231	GROSS △	VXV VORTAC		Remain within 10 NM	
3000		VXV R-231	GROSS △	VXV VORTAC		Remain within 10 NM	
3000		VXV R-231	GROSS △	VXV VORTAC		Remain within 10 NM	
3000		VXV R-231	GROSS △	VXV VORTAC		Remain within 10 NM	
3000		VXV R-231	GROSS △	VXV VORTAC		Remain within 10 NM	
3000		VXV R-231	GROSS △	VXV VORTAC		Remain within 10 NM	
3000		VXV R-231	GROSS △	VXV VORTAC		Remain within 10 NM	
3000		VXV R-231	GROSS △	VXV VORTAC		Remain within 10 NM	
3000		VXV R-231	GROSS △	VXV VORTAC		Remain within 10 NM	
3000		VXV R-231	GROSS △	VXV VORTAC		Remain within 10 NM	
3000		VXV R-231	GROSS △	VXV VORTAC		Remain within 10 NM	
3000		VXV R-231	GROSS △	VXV VORTAC		Remain within 10 NM	
3000		VXV R-231	GROSS △	VXV VORTAC		Remain within 10 NM	
3000		VXV R-231	GROSS △	VXV VORTAC		Remain within 10 NM	
3000		VXV R-231	GROSS △	VXV VORTAC		Remain within 10 NM	
3000		VXV R-231	GROSS △	VXV VORTAC		Remain within 10 NM	
3000		VXV R-231	GROSS △	VXV VORTAC		Remain within 10 NM	
3000		VXV R-231	GROSS △	VXV VORTAC		Remain within 10 NM	
3000		VXV R-231	GROSS △	VXV VORTAC		Remain within 10 NM	
3000		VXV R-231	GROSS △	VXV VORTAC		Remain within 10 NM	
3000		VXV R-231	GROSS △	VXV VORTAC		Remain within 10 NM	
3000		VXV R-231	GROSS △	VXV VORTAC		Remain within 10 NM	
3000		VXV R-231	GROSS △	VXV VORTAC		Remain within 10 NM	
3000		VXV R-231	GROSS △	VXV VORTAC		Remain within 10 NM	
3000		VXV R-231	GROSS △	VXV VORTAC		Remain within 10 NM	
3000		VXV R-231	GROSS △	VXV VORTAC		Remain within 10 NM	
3000		VXV R-231	GROSS △	VXV VORTAC		Remain within 10 NM	
3000		VXV R-231	GROSS △	VXV VORTAC		Remain within 10 NM	
3000		VXV R-231	GROSS △	VXV VORTAC		Remain within 10 NM	
3000		VXV 					