

KNOXVILLE, TENNESSEE

AL-218 (FAA)

24249

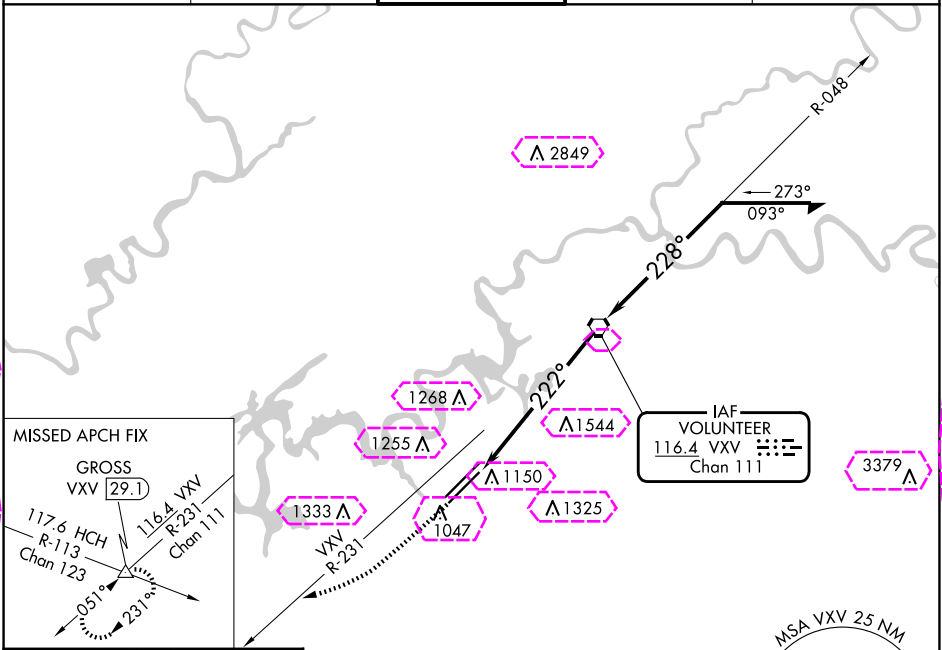
VOR/DME VVX 116.4 Chan 111	APP CRS 222°	Rwy Idg TDZE 965 Apt Elev 986
--	------------------------	---

VOR RWY 23L
MC GHEE TYSON (T'YS)

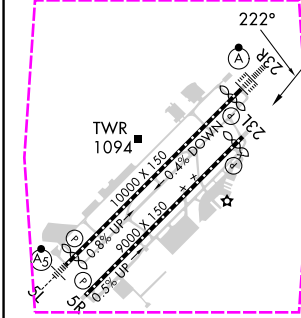
⚠

MISSED APPROACH: Climb to 3000 via VVX R-231 to GROSS INT/29.1 DME and hold.

ATIS 128.35	KNOXVILLE APP CON 123.9 360.8	KNOXVILLE TOWER 121.2 257.8	GND CON 121.9 348.6	CLNC DEL 121.65
-----------------------	---	---------------------------------------	-------------------------------	---------------------------



ELEV 986	D	TDZE 965
-----------------	----------	-----------------



HIRL Rwys 5L-23R and 5R-23L
REIL Rwys 5R and 23L
TDZ/CL Rwys 5R and 23R

FAF to MAP 6.8 NM					
Knots	60	90	120	150	180
Min:Sec	6:48	4:32	3:24	2:43	2:16

3000 GROSS VVX R-231

VVX VORTAC

Remain within 10 NM

048° 228° 4000

2.88° TCH 50

3100

1.8 5 NM

CATEGORY	A	B	C	D
S-23L	1600-1 635 (700-1)	1600-1 635 (700-1)	1600-1 635 (700-1)	1600-2 635 (700-2)
CIRCLING	1600-1 614 (700-1)	1620-1 634 (700-1)	1660-2 674 (700-2)	1900-3 914 (1000-3)

KNOXVILLE, TENNESSEE

AL-218 (FAA)

25219

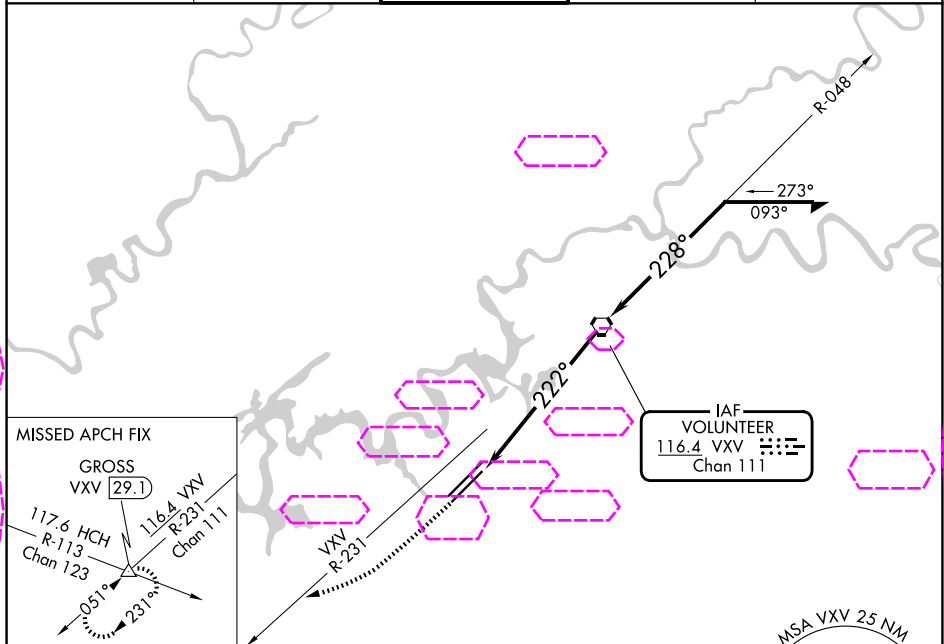
VOR/DME VVX 116.4 Chan 111	APP CRS 222°	Rwy Ldg TDZE Apt Elev	8600 965 986
--	------------------------	-----------------------------	---

VOR RWY 23L

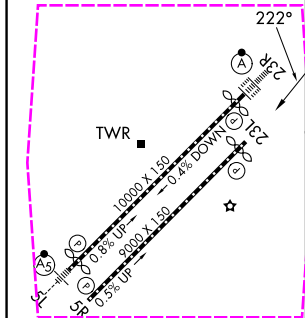
MC GHEE TYSON (TYS)

MISSED APPROACH: Climb to 3000 via VVX R-231 to GROSS INT/29.1 DME and hold.

ATIS 128.35	KNOXVILLE APP CON 123.9 360.8	KNOXVILLE TOWER 121.2 257.8	GND CON 121.9 348.6	CLNC DEL 121.65
-----------------------	---	---------------------------------------	-------------------------------	---------------------------



ELEV 986	D	TDZE 965
-----------------	----------	-----------------



HIRL Rwys 5L-23R and 5R-23L REIL Rwys 5R and 23L TDZ/CL Rwys 5R and 23R					
FAF to MAP 6.8 NM					
Knots	60	90	120	150	180
Min:Sec	6:48	4:32	3:24	2:43	2:16

3000 ↑ VVX R-231		GROSS △	VVX VORTAC		Remain within 10 NM
3100		2.88° TCH 50	048°		4000
222°		3100	228°		
1.8		5 NM			
CATEGORY	A	B	C	D	
S-23L	1600-1 635 (700-1)	1600-1 635 (700-1)	1600-1 635 (700-1)	1600-2 635 (700-2)	
CIRCLING	1600-1 614 (700-1)	1620-1 634 (700-1)	1660-2 674 (700-2)	1900-3 914 (1000-3)	

KNOXVILLE, TENNESSEE
Amdt 5B 10AUG23

35°49'N-84°00'W

MC GHEE TYSON (TYS)
VOR RWY 23L

SE-1, 07 AUG 2025 to 04 SEP 2025

SE-1, 07 AUG 2025 to 04 SEP 2025