

KNOXVILLE, TENNESSEE

AL-218 (FAA)

24249

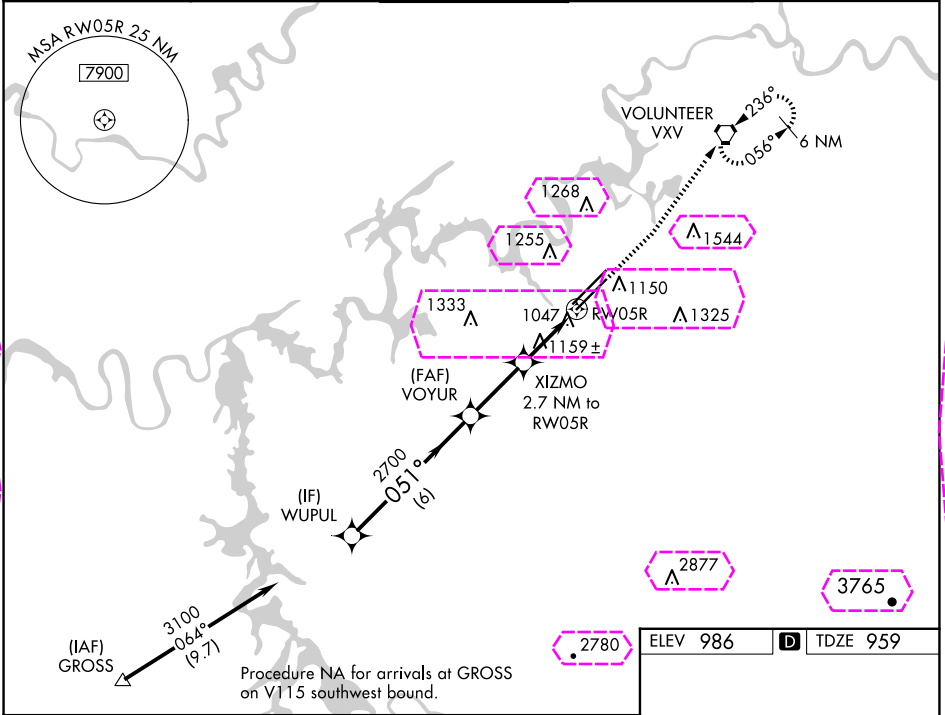
WAAS CH 97410 W05B	APP CRS 051°	Rwy Idg 8600 TDZE 959 Apt Elev 986
--	------------------------	---

RNAV (GPS) RWY 5R

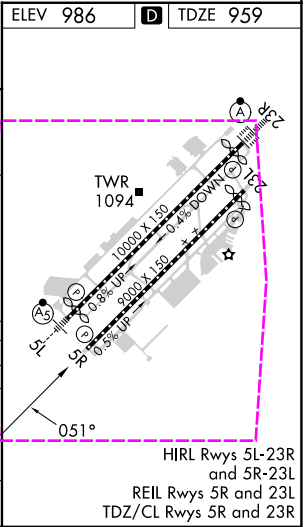
MC GHEE TYSON (TYS)

RNP APCH - GPS.		MISSED APPROACH: Climb to 1500 then climb to 4000 direct VXV VORTAC and hold, continue climb-in-hold to 4000.
<div><div><div><div><div><div></div></div></div><div><div><div></div></div></div></div></div></div> <div>For uncompensated Baro-VNAV systems, LNAV/VNAV NA below -10°C or above 54°C.</div>		

ATIS 128.35	KNOXVILLE APP CON 123.9 360.8	KNOXVILLE TOWER 121.2 257.8	GND CON 121.9 348.6	CLNC DEL 121.65
-----------------------	---	---------------------------------------	-------------------------------	---------------------------



VGSI and RNAV glidepath not coincident (VGSI Angle 3.00/TCH 50).				
CATEGORY	A	B	C	D
LPV DA		1159-3/4	200 (200-3/4)	
LNAV/VNAV DA		1276-1 1/8	317 (300-1 1/8)	
LNAV MDA	1420-1	461 (500-1)	1420-1 3/8	461 (500-1 3/8)
CIRCLING	1500-1 514 (600-1)	1620-1 634 (700-1)	1660-2 674 (700-2)	1900-3 914 (1000-3)



KNOXVILLE, TENNESSEE
Amdt 2B 10AUG23

35°49'N-84°00'W

MC GHEE TYSON (TYS)
RNAV (GPS) RWY 5R

KNOXVILLE, TENNESSEE

AL-218 (FAA)

25219

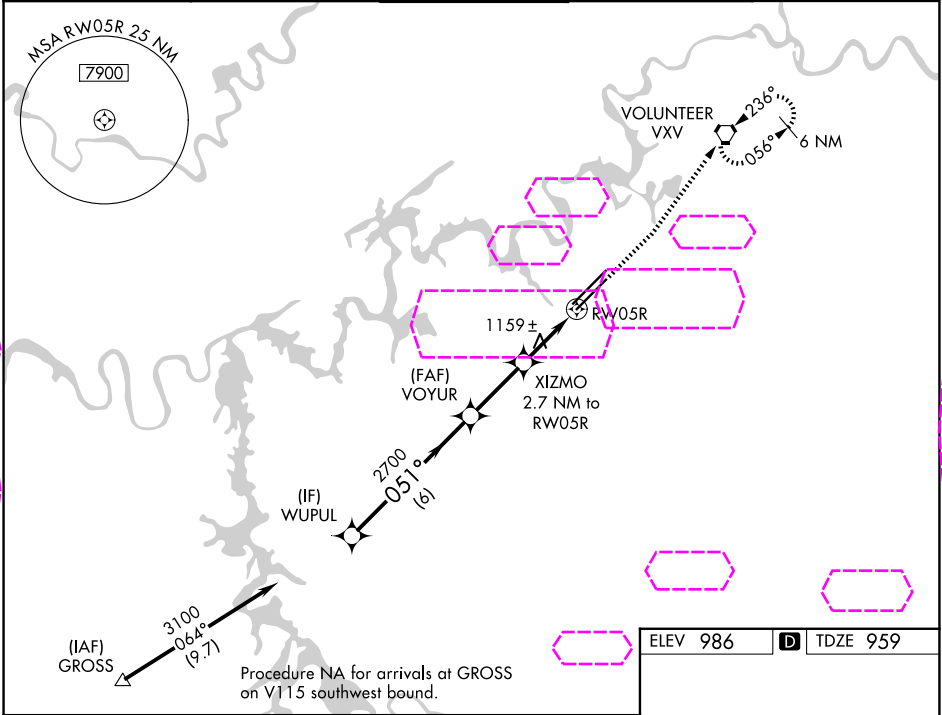
WAAS CH 97410 W05B	APP CRS 051°	Rwy Ldg TDZE 959 Apt Elev 986
--	------------------------	---

RNAV (GPS) RWY 5R

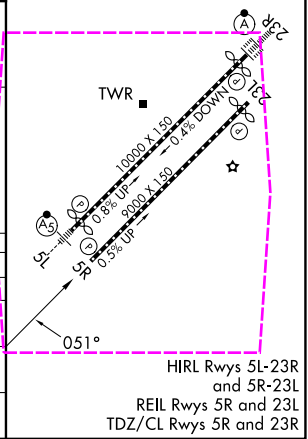
MC GHEE TYSON (TYS)

RNP APCH - GPS.		MISSED APPROACH: Climb to 1500 then climb to 4000 direct VXV VORTAC and hold, continue climb-in-hold to 4000.
<div><div><div><div><div><div></div></div></div><div><div><div></div></div><div><div></div></div></div></div></div></div>	For uncompensated Baro-VNAV systems, LNAV/VNAV NA below -10°C or above 54°C.	

ATIS 128.35	KNOXVILLE APP CON 123.9 360.8	KNOXVILLE TOWER 121.2 257.8	GND CON 121.9 348.6	CLNC DEL 121.65
-----------------------	---	---------------------------------------	-------------------------------	---------------------------



WUPUL 3100 051° GP 3.00° TCH 43				
VOYUR 2700 051° XIZMO 2.7 NM to RWY 05R 1840 1.4 NM to RWY 05R				
6 NM 2.7 NM 1.3 NM 1.4 NM				
CATEGORY	A	B	C	D
LPV DA	1159-3/4		200 (200-3/4)	
LNAV/VNAV DA	1276-1 1/8		317 (300-1 1/8)	
LNAV MDA	1420-1 461 (500-1)		1420-1 3/8 461 (500-1 3/8)	
CIRCLING	1500-1 514 (600-1)	1620-1 634 (700-1)	1660-2 674 (700-2)	1900-3 914 (1000-3)



KNOXVILLE, TENNESSEE
Amdt 2B 10AUG23

35°49'N-84°00'W

MC GHEE TYSON (TYS)
RNAV (GPS) RWY 5R

SE-1, 07 AUG 2025 to 04 SEP 2025

SE-1, 07 AUG 2025 to 04 SEP 2025