

KNOXVILLE, TENNESSEE



AL-218 (FAA)

24249

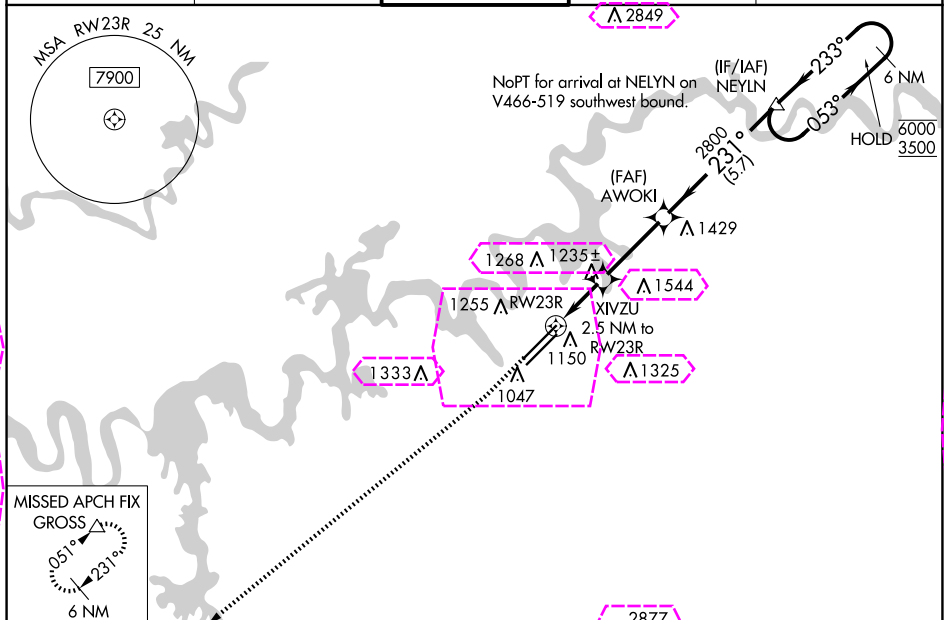
WAAS CH 81902 W23A	APP CRS 231°	Rwy Idg 9495 TDZE 984 Apt Elev 986
--	------------------------	---

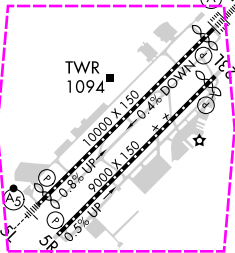
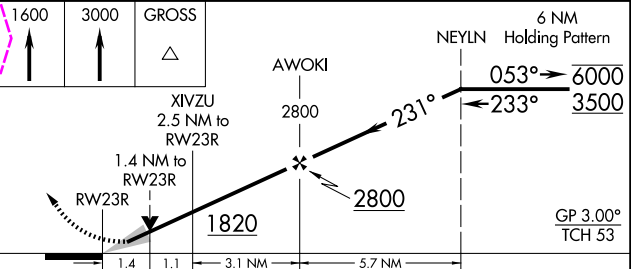

RNAV (GPS) RWY 23R

MC GHEE TYSON (T'YS)

RNP APCH - GPS.	ALSF-2	MISSED APPROACH: Climb to 1600 then climb to 3000 direct GROSS and hold.
 For uncompensated Baro-VNAV systems, LNAV/VNAV NA below -10°C or above 54°C. For inop ALS, increase LNAV Cat C/D visibility to 1½ SM.		

ATIS 128.35	KNOXVILLE APP CON 123.9 360.8	KNOXVILLE TOWER 121.2 257.8	GND CON 121.9 348.6	CLNC DEL 121.65
-----------------------	---	---------------------------------------	-------------------------------	---------------------------



ELEV 986	D	TDZE 984		
				
HIRL Rwy 5L-23R and 5R-23L REIL Rwy 5R and 23L TDZ/CL Rwy 5R and 23R				
				
CATEGORY	A	B	C	D
LPV DA	1184/18 200 (200-½)			
LNAV/VNAV DA	1529-1½ 545 (600-1½)			
LNAV MDA	1500/24	516 (600-½)	1500/55	516 (600-1)
 CIRCLING	1500-1 514 (600-1)	1560-1 574 (700-1)	1660-2 674 (700-2)	1900-3 914 (1000-3)

KNOXVILLE, TENNESSEE

Amdt 3 12AUG21

35°49'N-84°00'W

MC GHEE TYSON (T'YS)

RNAV (GPS) RWY 23R

RNAV (GPS) RWY 23R