

LOC I-TYS	APP CRS	Rwy Idg	9508
<u>110.3</u>	051°	TDZE	953
		Apt Elev	986

ILS or LOC RWY 5L  
MC GHEE TYSON (TYS)

DME or RADAR required.



MALSR



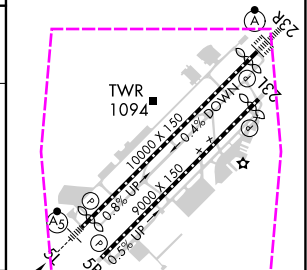
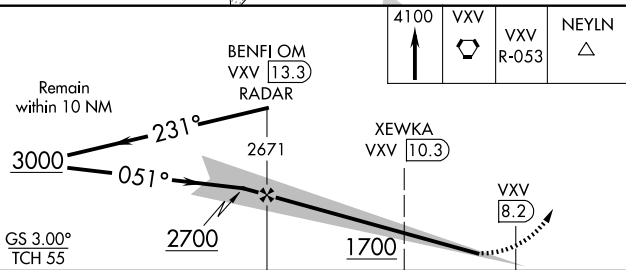
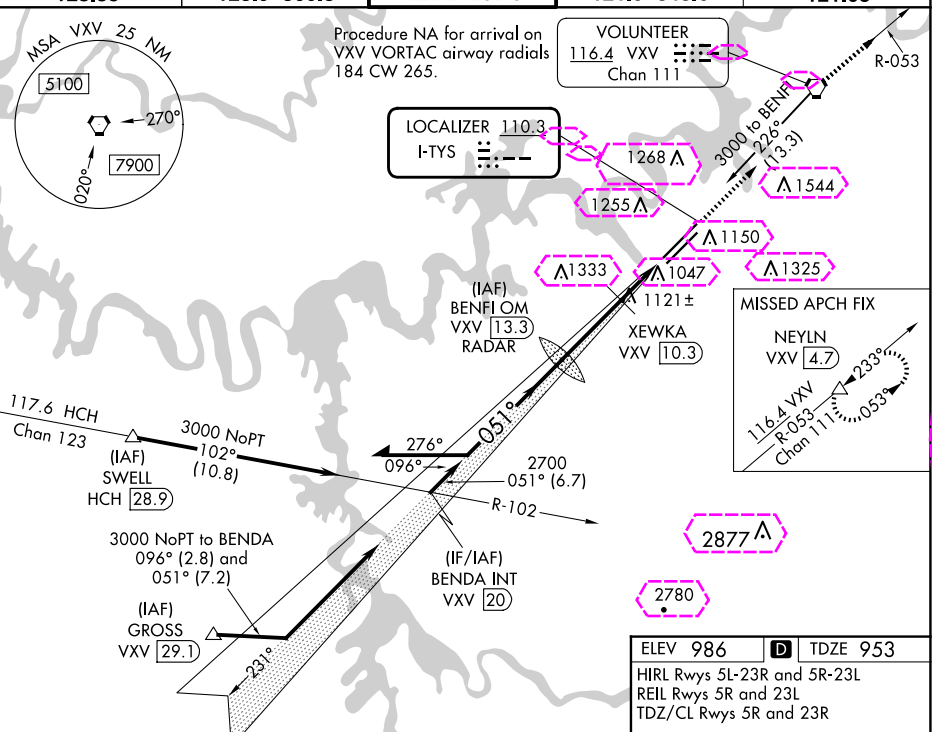
**MISSED APPROACH:** Climb to 4100 direct VXV VORTAC and on VXV VORTAC R-053 to NEYLN/VXV 4.7 DME and hold, continue climb-in-hold to 4100.

ATIS  
**128.35**

KNOXVILLE APP CON  
123.9 360.8

KNOXVILLE TOWER  
**121.2 257.8**

GND CON  
121.9 348.6

CLNC DEL  
**121.65**

	3 NM		2.2 NM		
CATEGORY	A	B	C	D	
S-ILS 5L	1153-½		200 (200-½)		
S-LOC 5L	1500-½ 547 (600-½)		1500-1⅞ 547 (600-1⅞)		
CIRCLING	1500-1 514 (600-1)	1560-1 574 (600-1)	1660-2 674 (700-2)	1900-3 914 (1000-3)	

KNOXVILLE, TENNESSEE


AL-218 (FAA)

25219

LOC I-TYS <b>110.3</b>	APP CRS <b>051°</b>	Rwy Ldg <b>9508</b> TDZE <b>953</b> Apt Elev <b>986</b>
---------------------------	------------------------	---

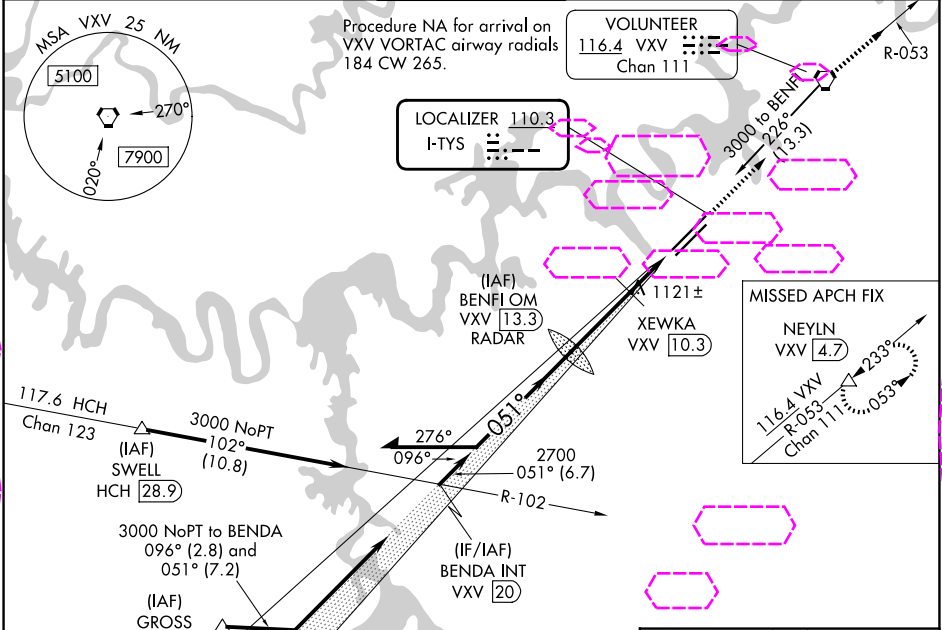
ILS or LOC RWY 5L  
MC GHEE TYSON (T'YS)

DME or RADAR required.

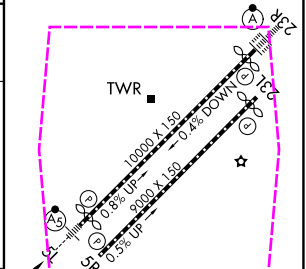
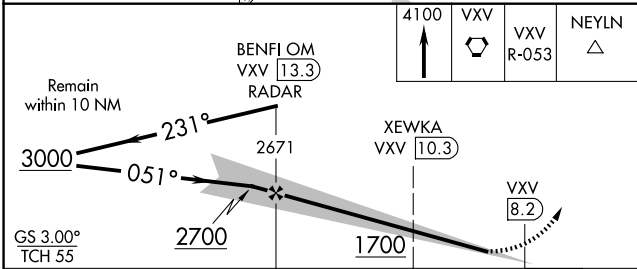
MALSR

MISSED APPROACH: Climb to 4100 direct VXV VORTAC and on VXV VORTAC R-053 to NEYLN/VXV 4.7 DME and hold, continue climb-in-hold to 4100.

ATIS <b>128.35</b>	KNOXVILLE APP CON <b>123.9 360.8</b>	KNOXVILLE TOWER <b>121.2 257.8</b>	GND CON <b>121.9 348.6</b>	CLNC DEL <b>121.65</b>
-----------------------	---	---------------------------------------	-------------------------------	---------------------------



ELEV 986	TDZE 953
HIRL Rwys 5L-23R and 5R-23L	
REIL Rwys 5R and 23L	
TDZ/CL Rwys 5R and 23R	



CATEGORY	A	B	C	D
S-ILS 5L		1153-1/2	200 (200-1/2)	
S-LOC 5L	1500-1/2	547 (600-1/2)	1500-1 1/8	547 (600-1 1/8)
CIRCLING	1500-1 514 (600-1)	1560-1 574 (600-1)	1660-2 674 (700-2)	1900-3 914 (1000-3)