

KNOXVILLE, TENNESSEE

AL-218 (FAA)

24249

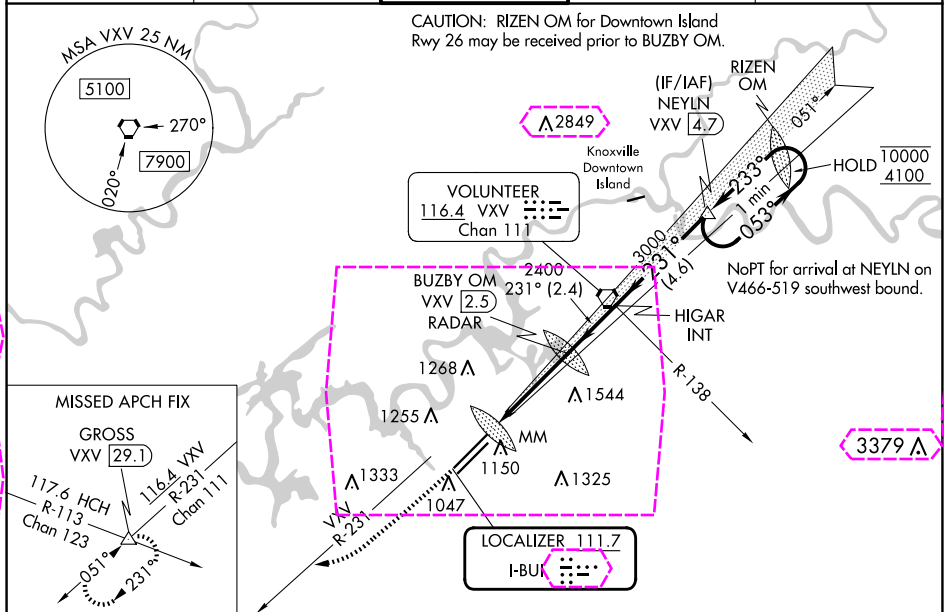
LOC I-BUI 111.7	APP CRS 231°	Rwy Idg 9495 TDZE 984 Apt Elev 986
---------------------------	------------------------	---

ILS or LOC RWY 23R

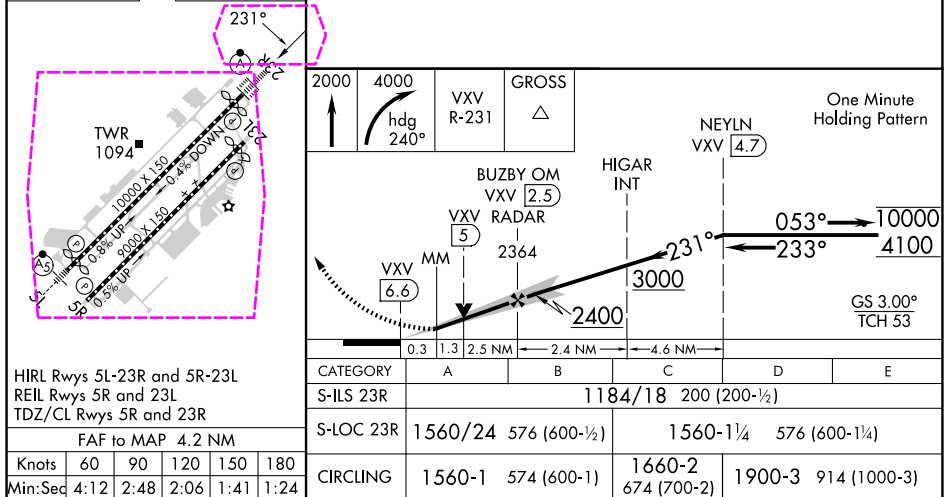
MC GHEE TYSON (T'YS)

DME or RADAR required.		ALSF-2	MISSED APPROACH: Climb to 2000 then climbing right turn to 4000 on heading 240° and VXV VORTAC R-231 to GROSS INT/VXV 29.1 DME and hold.
For inop ALS, increase S-ILS 23R Cat E visibility to RVR 4000; increase S-LOC 23R Cat C/D/E visibility to 1% SM.			

ATIS 128.35	KNOXVILLE APP CON 123.9 360.8	KNOXVILLE TOWER 121.2 257.8	GND CON 121.9 348.6	CLNC DEL 121.65
-----------------------	---	---------------------------------------	-------------------------------	---------------------------



ELEV 986	D	TDZE 984
----------	---	----------



HIRL Rwy 5L-23R and 5R-23L
REIL Rwy 5R and 23L
TDZ/CL Rwy 5R and 23R
FAF to MAP 4.2 NM

Knots	60	90	120	150	180
Min:Sec	4:12	2:48	2:06	1:41	1:24

KNOXVILLE, TENNESSEE

Amdt 14B 19MAY22

35°49'N-84°00'W

ILS or LOC RWY 23R

MC GHEE TYSON (T'YS)

SE-1, 10 JUL 2025 to 07 AUG 2025

SE-1, 10 JUL 2025 to 07 AUG 2025

ILS or LOC RWY 23R

MC GHEE TYSON (TYS)

LOC I-BUI <u>111.7</u>	APP CRS 231°	Rwy Ldg 9495 TDZE 984 Apt Elev 986
----------------------------------	------------------------	---

	DME or RADAR required.
--	------------------------

T	For inop ALS, increase S-ILS 23R Cat E visibility to
A	RVR 4000; increase S-LOC 23R Cat C/D/E visibility to 1 ⁵ / ₈ SM

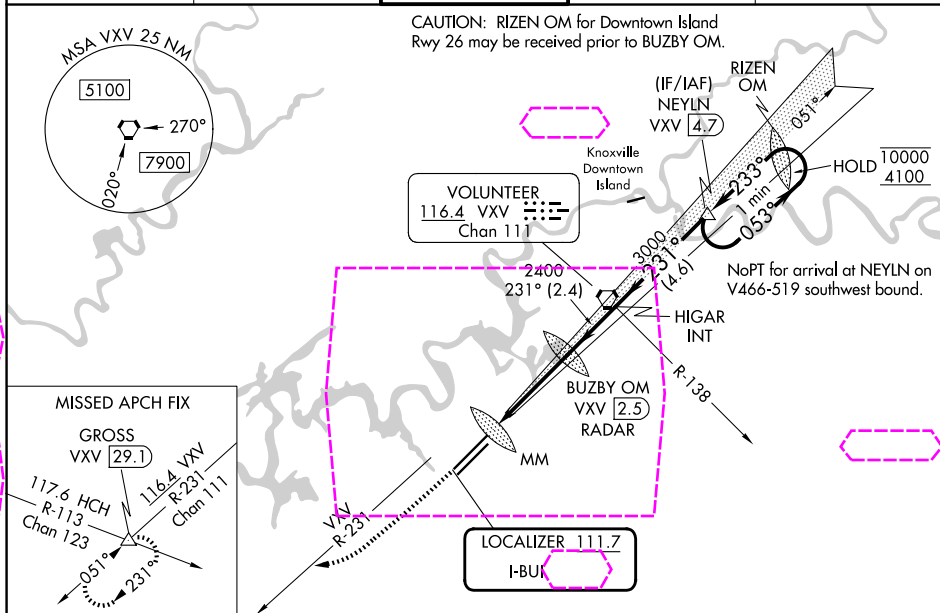
ALSF-2



MISSED APPROACH: Climb to 2000 then climbing right turn to 4000 on heading 240° and VXX
VORTAC R-231 to GROSS INT/VXX 29.1 DME and hold.

ATIS 128.35	KNOXVILLE APP CON 123.9 360.8	KNOXVILLE TOWER 121.2 257.8	GND CON 121.9 348.6	CLNC DEL 121.65
----------------	----------------------------------	--------------------------------	------------------------	--------------------

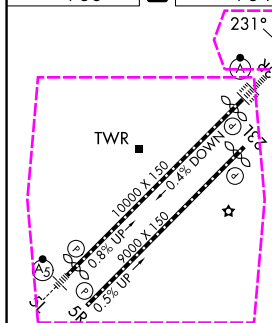
CAUTION: RIZEN OM for Downtown Island
Rwy 26 may be received prior to BUZBY OM.



ELEV 986	D	TDZE 984
----------	----------	----------

D

TDZE 984



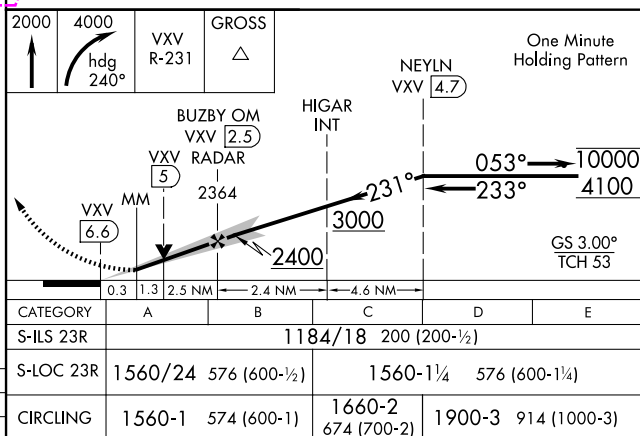
HIRL Rwy 5L-23R and 5R-23L
REIL Rwy 5R and 23L
TDZ/CL Rwy 5R and 23R

FAF to MAP 4.2 NM

Knots	60	90	120	150	180
Min:Sec	4:12	2:48	2:06	1:41	1:24

KNOXVILLE, TENNESSEE

Amdt 14B 19MAY22



MC GHEE TYSON (TYS)

ILS or LOC RWY 23R

35°49'N-84°00'W