

KNOXVILLE, TENNESSEE

AL-218 (FAA)

24249

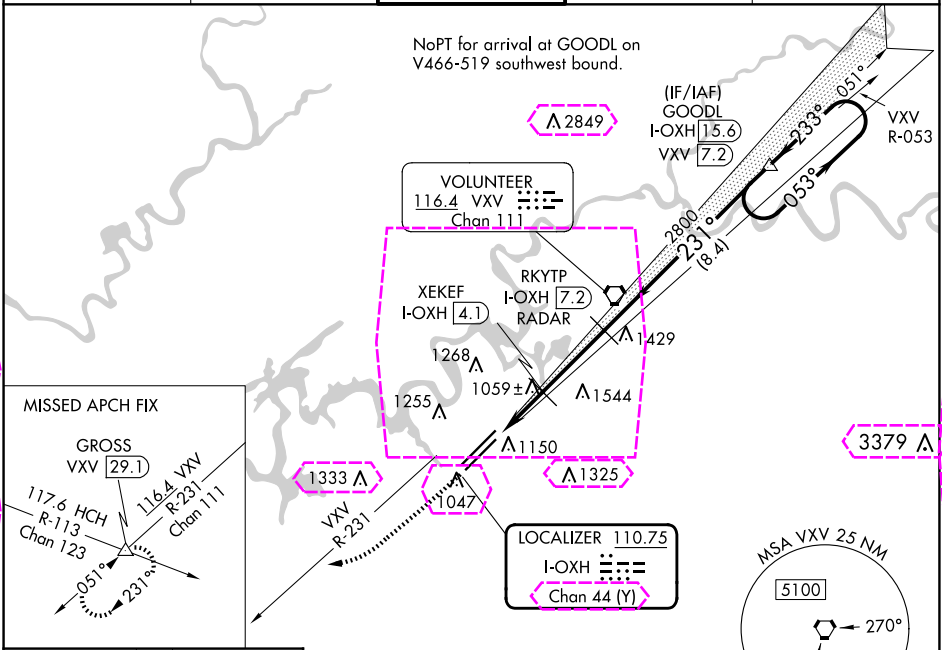
LOC/DME I- OXH 110.75 Chan 44 (Y)	APP CRS 231°	Rwy Idg 8600 TDZE 965 Apt Elev 986
--	------------------------	---

ILS or LOC RWY 23L
MC GHEE TYSON (T'YS)

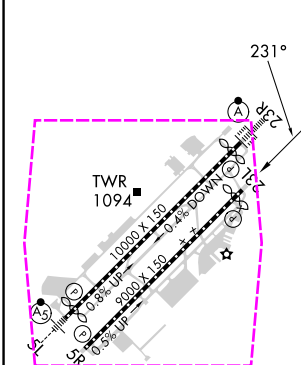
DME or RADAR required.

MISSED APPROACH: Climb to 2000 then climbing right turn to 4000 on heading 240° and VXV VORTAC R-231 to GROSS INT/VXV 29.1 DME and hold.

ATIS 128.35	KNOXVILLE APP CON 123.9 360.8	KNOXVILLE TOWER 121.2 257.8	GND CON 121.9 348.6	CLNC DEL 121.65
-----------------------	---	---------------------------------------	-------------------------------	---------------------------



ELEV 986	D	TDZE 965
----------	---	----------



HIRL Rwy 5L-23R and 5R-23L
REIL Rwy 5R and 23L
TDZ/CL Rwy 5R and 23R

2000	4000	VXV R-231	GROSS	Disregard all marker beacon indications.
hdg 240°				GOODL I-OMH 15.6 One Minute Holding Pattern
		RKYTP I-OMH 7.2		
		XEKEF I-OMH 4.1		
		I-OMH 1.6		
		I-OMH 2.6		
		2800		
		1800		
		231°		
		053°		
		233°		
		3500		
		GS 3.00° TCH 52		
		1 NM 1.5 3.1 NM 8.4 NM		
CATEGORY	A	B	C	D
S-ILS 23L	1165/40	200 (200-3/4)		
S-LOC 23L	1320/55	355 (400-1)		
CIRCLING	1500-1 514 (600-1)	1620-1 634 (700-1)	1660-2 674 (700-2)	1900-3 914 (1000-3)

KNOXVILLE, TENNESSEE
Orig-A 10AUG23

35°49'N-84°00'W

MC GHEE TYSON (T'YS)

ILS or LOC RWY 23L

SE-1, 10 JUL 2025 to 07 AUG 2025

SE-1, 10 JUL 2025 to 07 AUG 2025

KNOXVILLE, TENNESSEE

AL-218 (FAA)

25219

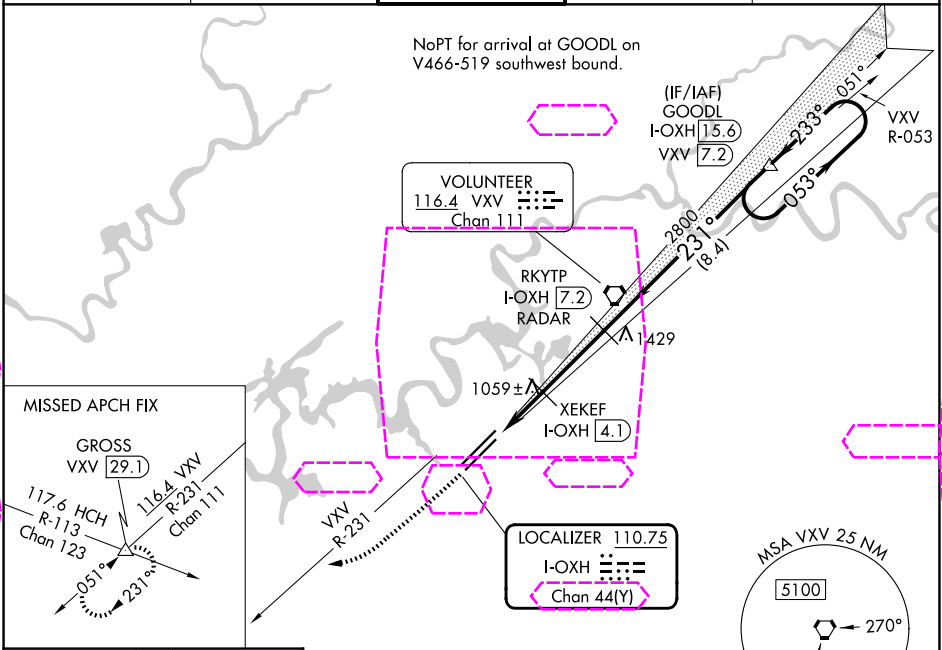
LOC/DME I-OXH 110.75 Chan 44 (Y)	APP CRS 231°	Rwy Ldg TDZE 965 Apt Elev 986
--	------------------------	---

ILS or LOC RWY 23L
MC GHEE TYSON (T'YS)

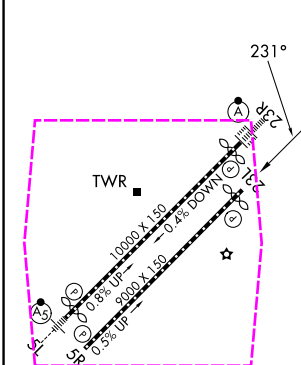
DME or RADAR required.

MISSED APPROACH: Climb to 2000 then climbing right turn to 4000 on heading 240° and VXV VORTAC R-231 to GROSS INT/VXV 29.1 DME and hold.

ATIS 128.35	KNOXVILLE APP CON 123.9 360.8	KNOXVILLE TOWER 121.2 257.8	GND CON 121.9 348.6	CLNC DEL 121.65
-----------------------	---	---------------------------------------	-------------------------------	---------------------------



ELEV 986	D	TDZE 965
-----------------	----------	-----------------



2000	4000	VXV R-231	GROSS	Disregard all marker beacon indications.
↑	hdg 240°		△	GOODL I-OXH 15.6 One Minute Holding Pattern
CATEGORY A B C D				
S-ILS 23L 1165/40 200 (200-3/4)				
S-LOC 23L 1320/55 355 (400-1)				
CIRCLING 1500-1 1620-1 1660-2 1900-3				
514 (600-1) 634 (700-1) 674 (700-2) 914 (1000-3)				

HIRL Rws 5L-23R and 5R-23L
REIL Rws 5R and 23L
TDZ/CL Rws 5R and 23R

KNOXVILLE, TENNESSEE
Orig-A 10AUG23

35°49'N-84°00'W

MC GHEE TYSON (T'YS)

ILS or LOC RWY 23L

SE-1, 07 AUG 2025 to 04 SEP 2025

SE-1, 07 AUG 2025 to 04 SEP 2025