

KNOXVILLE, TENNESSEE

AL-218 (FAA)

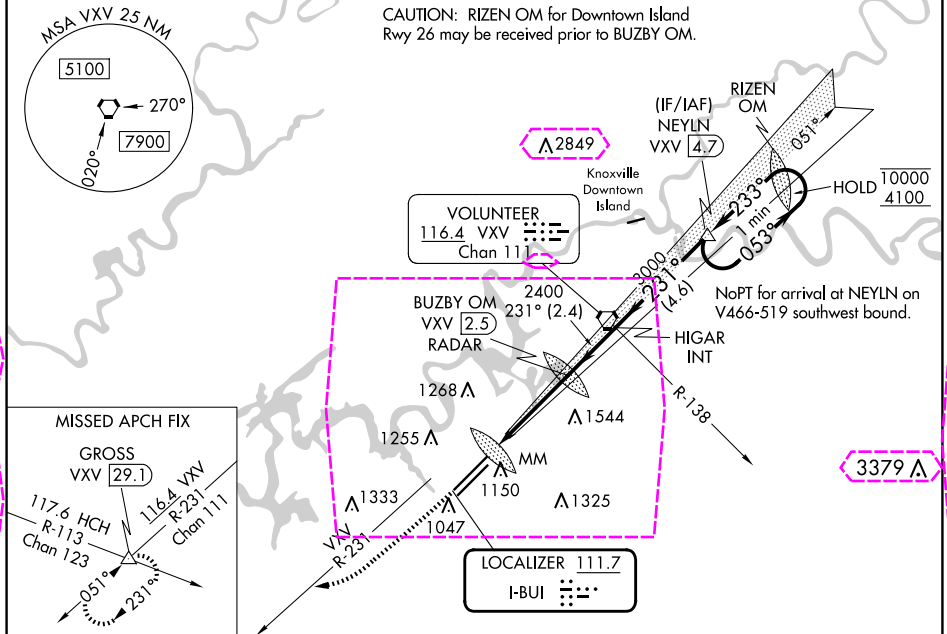
24249

LOC I-BUI 111.7	APP CRS 231°	Rwy ldg 9495 TDZE 984 Apt Elev 986
--------------------	-----------------	------------------------------------------

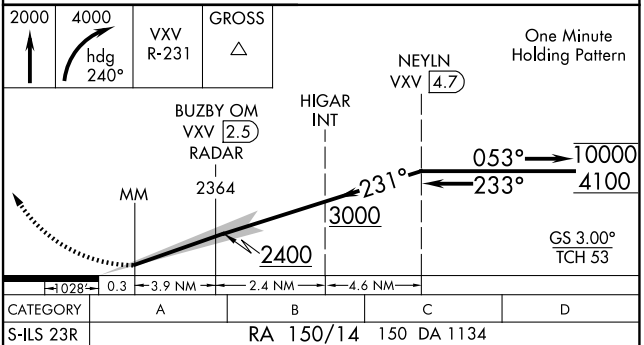
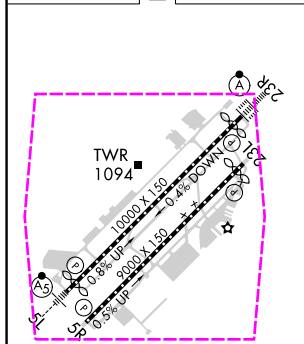
ILS RWY 23R (SA CAT I)
MC GHEE TYSON (TYS)

DME or RADAR required. Requires specific OPSEC, MSPEC, or LOA approval.		ALSIF-2 	MISSED APPROACH: Climb to 2000 then climbing right turn to 4000 on heading 240° and VXV VORTAC R-231 to GROSS INT/VXV 29.1 DME and hold.	
ATIS 128.35	KNOXVILLE APP CON 123.9 360.8	KNOXVILLE TOWER 121.2 257.8	GND CON 121.9 348.6	CLNC DEL 121.65

CAUTION: RIZEN OM for Downtown Island
Rwy 26 may be received prior to BUZBY OM.



ELEV 986	D	TDZE 984
----------	---	----------



HIRL Rwy 5L-23R and 5R-23L
REIL Rwy 5R and 23L
TDZ/CL Rwy 5R and 23R

SA CATEGORY I ILS- SPECIAL AIRCREW
& AIRCRAFT CERTIFICATION REQUIRED

KNOXVILLE, TENNESSEE
Amdt 14B 19MAY22

35°49'N-84°00'W

MC GHEE TYSON (TYS)
ILS RWY 23R (SA CAT I)

KNOXVILLE, TENNESSEE

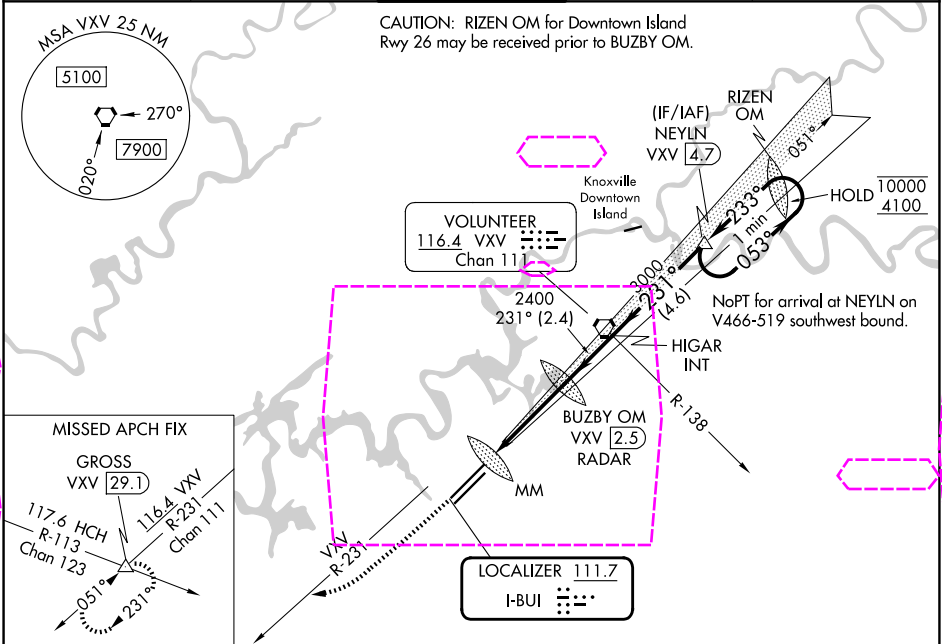
AL-218 (FAA)

25219

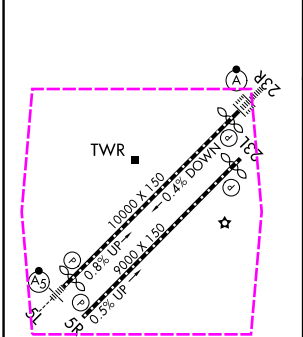
LOC I-BUI 111.7	APP CRS 231°	Rwy Ldg 9495 TDZE 984 Apt Elev 986
--------------------	-----------------	---------------------------------------------------

ILS RWY 23R (SA CAT I)
MC GHEE TYSON (TYS)

DME or RADAR required.		ALSIF-2	MISSED APPROACH: Climb to 2000 then climbing right turn to 4000 on heading 240° and VXV VORTAC R-231 to GROSS INT/VXV 29.1 DME and hold.	
ATIS 128.35		KNOXVILLE APP CON 123.9 360.8	KNOXVILLE TOWER 121.2 257.8	GND CON 121.9 348.6
				CLNC DEL 121.65

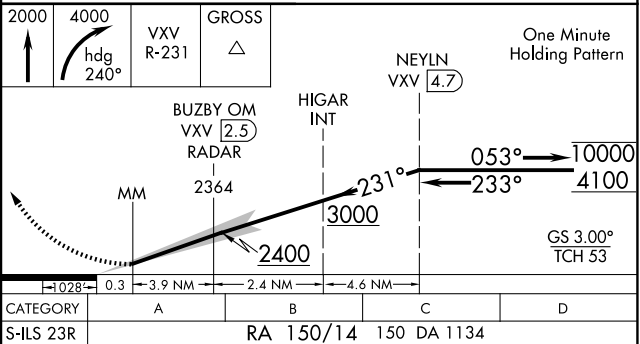


ELEV 986	D	TDZE 984
----------	---	----------



CATEGORY	A	B	C	D
S-ILS 23R	RA 150/14 150 DA 1134			

HIRL Rws 5L-23R and 5R-23L
REIL Rws 5R and 23L
TDZ/CL Rws 5R and 23R



SA CATEGORY I ILS- SPECIAL AIRCREW & AIRCRAFT CERTIFICATION REQUIRED

KNOXVILLE, TENNESSEE
Amdt 14B 19MAY22

35°49'N-84°00'W

MC GHEE TYSON (TYS)
ILS RWY 23R (SA CAT I)

SE-1, 07 AUG 2025 to 04 SEP 2025

SE-1, 07 AUG 2025 to 04 SEP 2025